

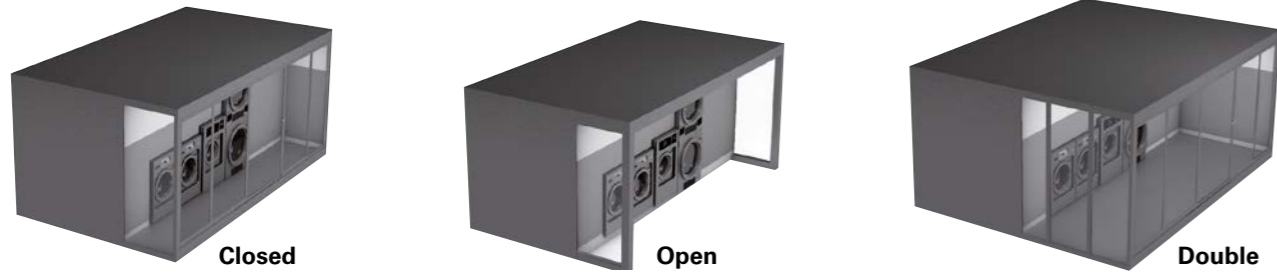
# Clean & Move

Mobility for  
the coin laundry



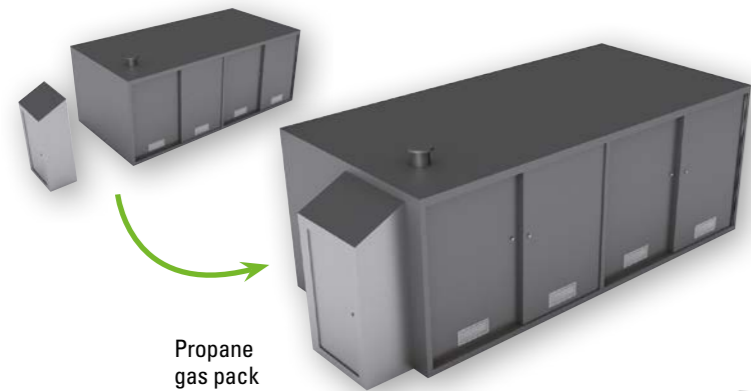


## ▼ MODULE TYPE



## ▼ ADDITIONAL OPTIONS FOR PERSONALIZATION

DOMUS offers other options to complete the personalisation of your module, like the colour of the structure, accessories, etc.

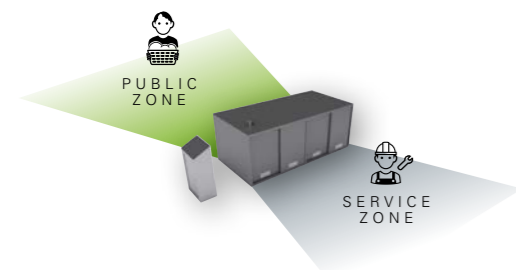


- ✓ WATER HEATING SYSTEM (electrical, natural gas or propane gas)  
PROPANE GAS PACK
  - ✓ AIR CONDITIONING
  - ✓ TWO-LEAF DOOR
  - ✓ ACCESS RAMP FOR THE DISABLED
  - ✓ EXTRA VENTILATION GRILLE
  - ✓ DOMOTIC
  - ✓ STAINLESS STEEL STRUCTURE
- ... **WHAT DO YOU NEED?**



## Design the interior

The standard module is designed to be very light, with a front that allows you to see the elegance of its interior.



## COMPLETE DESIGN Clean & Move+

DOMUS proposal is CLEAN & GO by Domus. A daring, modern and functional design to create and decorate your own coin laundry: signalling, machine numbers, instructions, complements.



## WASHER EXTRACTORS

ECOVOLUTION by DOMUS



## DRYERS

ECOVOLUTION by DOMUS



## AUXILIARY MACHINES



## EASY PROGRAMMING FOR THE PROPRIETOR / FRIENDLY INTERACTION FOR THE USER



### THE PROPRIETOR FINDS

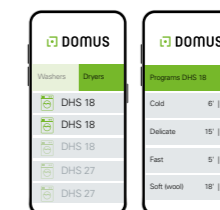
- ✓ Easy programming for time zones
- ✓ Prices lists easy programming: prices, promotions
- ✓ Statistics, earnings data
- ✓ Remote management

DOMUSCONNECT



### THE USER FINDS

- ✓ Easy selection of programs
- ✓ Easy operation of machines
- ✓ Visualization of videos: use instructions, adverts
- ✓ Remote payment: DOMUS LAUNDRY APP



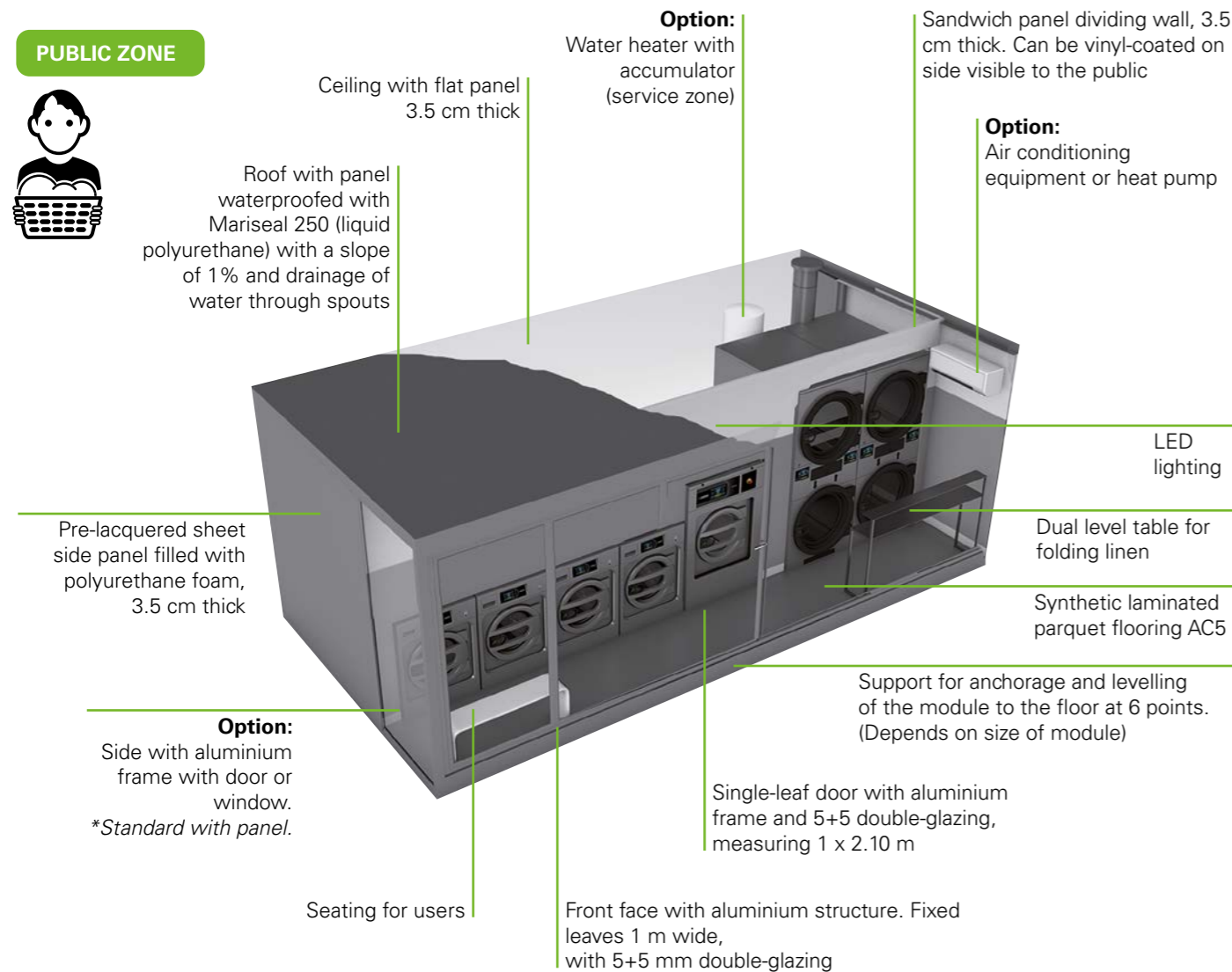
## What is the module like?

The module is designed to create an attractive space for the customer, at the same as offering optimum service and maintenance.

### FRONT VIEW

#### What do we want from the front part?

A module which looks good from the outside, with large windows to allow people to recognize the business.

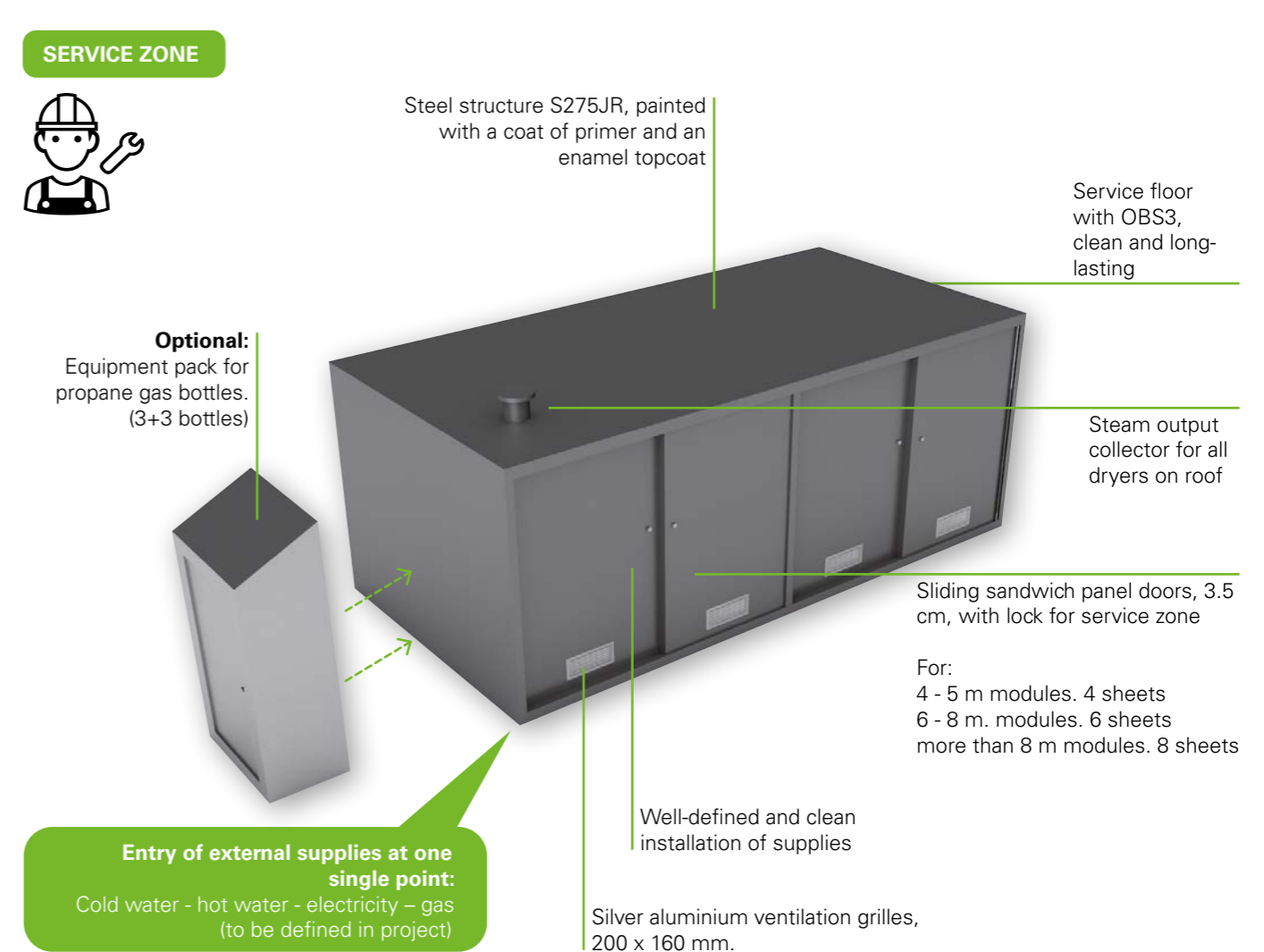


### REAR VIEW

#### What do we want from the service zone?

The rear part is the service zone, which must provide easy access to the machinery and all the accessories. How? By including sliding doors.

**Service and maintenance: the easiest.**



**We can design the module to meet your needs**  
**We make the project to your order**

The module is designed for transportation with the machines inside.

All the installations referring to the machines come completed.

The machines are levelled at the top and therefore some plinths must be manufactured in the container.

This design requires automatic dosing installed (in charge of the proprietor)

The machines are anchored to the floor.





# Clean & Move+

Mobility & customization for the launderette

## APPLICATIONS

PETROL STATIONS  
CARWASH  
TUNNELS  
MINING OR OIL  
FIELDS  
PUBLIC CAR PARKS

MULTITUDINOUS  
EVENTS  
SUPERMARKETS  
ONE-OFF  
LAUNDERETTES:

CAMP-SITES  
INVESTORS  
MILITARY  
NATURAL  
DISASTERS, FIRE  
ZONES



A complete design proposal for your mobile coin laundry



C. Energia, 12 - Pol. Ind. La Quintana  
08504 Sant Julià de Vilatorrada  
BARCELONA (SPAIN)

#### SALES DEPARTMENT

T. +34 93 812 27 96  
M. +34 649 482 730  
F. +34 93 888 76 63  
domus@domuslaundry.com  
export@domuslaundry.com

#### AFTER SALES DEPARTMENT

T. +34 93 888 76 73  
F. +34 93 888 76 63  
sat@domuslaundry.com

#### PARTS DEPARTMENT

T. +34 93 888 76 83  
F. +34 93 888 76 63  
parts@domuslaundry.com



[WWW.DOMUSLAUNDRY.COM](http://WWW.DOMUSLAUNDRY.COM)



ONNERA GROUP