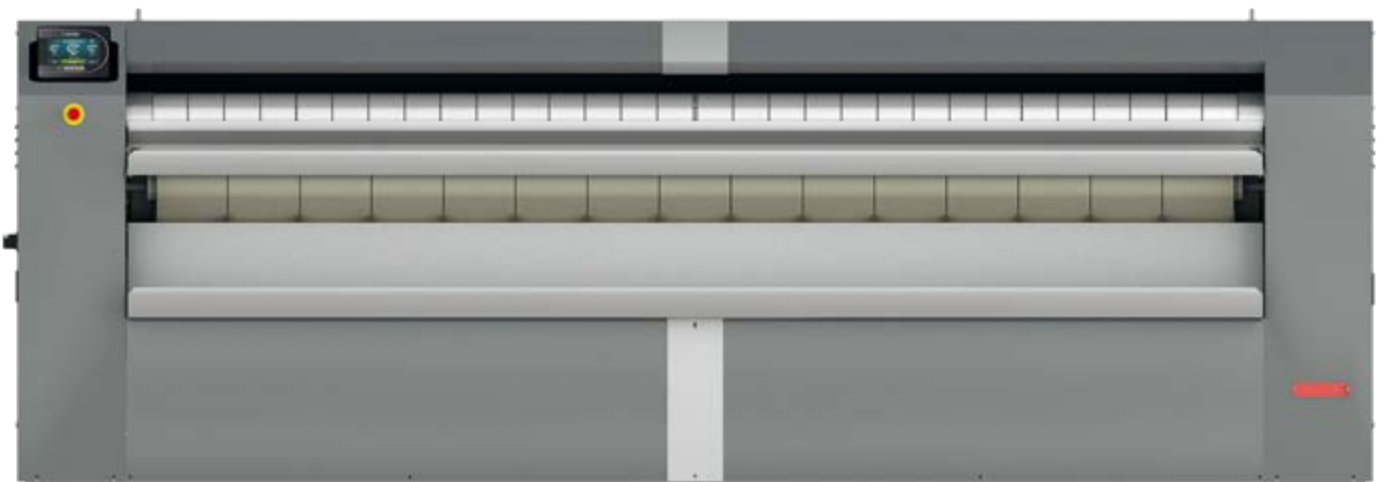


# Wall flatwork ironers

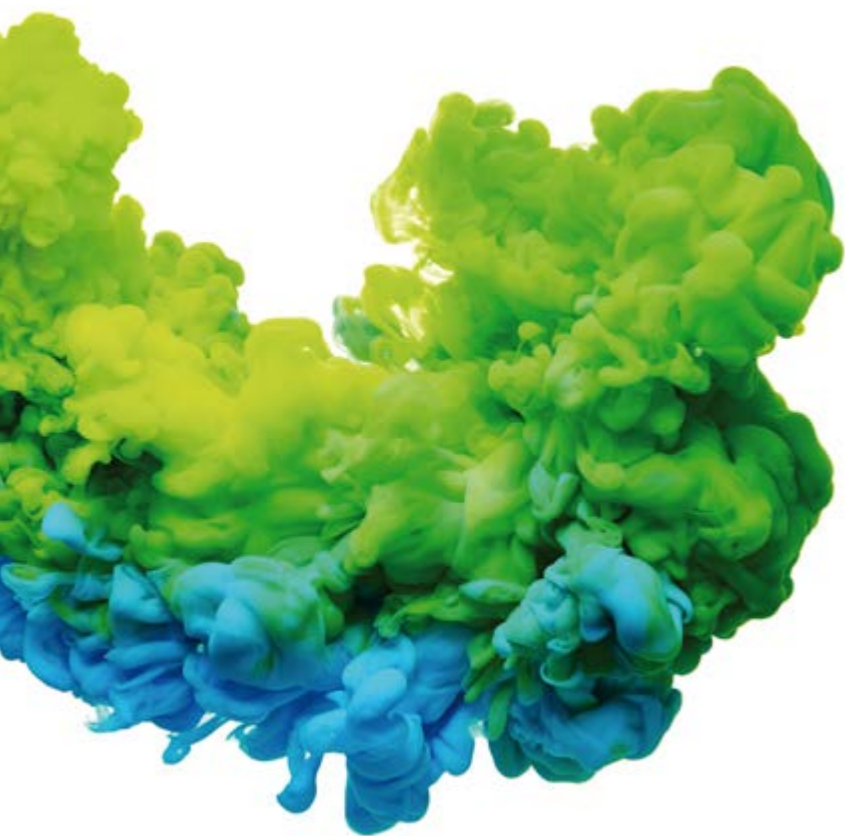


# Unique solutions for every space and need

DOMUS presents a wide range of flatwork ironers, a perfect and innovative solution for the drying, ironing and folding of the flatwork, for all type of customers.

Domus ironers are conceived to offer the best performance and productivity with noticeable energetic efficiency and time-saving options. For instance the Efficient Iron (humidity control), the New TOUCH II (only in Ø 500 / 650 mm models) and its many outstanding features: radiant gas burner, rear exit and lengthfolder as options, connectivity features, versatility, etc.

There are four main ranges: Ø 200 / 325 / 500 mm and the new Ø 650 mm models.



## ECOVOLUTION by DOMUS

| FLATWORK IRONERS   Ø 200 |          |             |  |  |
|--------------------------|----------|-------------|--|--|
| ROLL DIAMETER            | HEATING  | ROLL LENGTH |  |  |
|                          |          | 1400 mm     |  |  |
| Ø 200 mm                 | Electric | CM-1420 P   |  |  |

| FLATWORK IRONERS   Ø 325 |                  |             |           |           |
|--------------------------|------------------|-------------|-----------|-----------|
| ROLL DIAMETER            | HEATING          | ROLL LENGTH |           |           |
|                          |                  | 1400 mm     | 1600 mm   | 2000 mm   |
| Ø 325 mm                 | Electric and gas | CM-1432 P   | CM-1632 P | CM-2032 P |

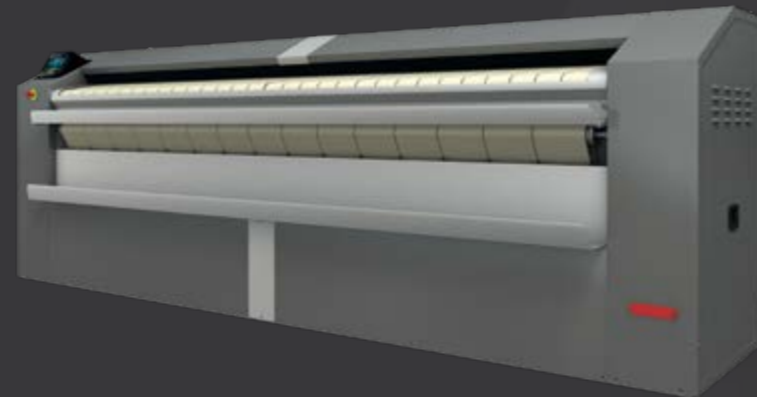
  

| FLATWORK IRONERS   Ø 500 |                                       |                  |                  |                  |
|--------------------------|---------------------------------------|------------------|------------------|------------------|
| ROLL DIAMETER            | HEATING                               | ROLL LENGTH      |                  |                  |
|                          |                                       | 2000 mm          | 2600 mm          | 3300 mm          |
| Ø 500 mm                 | Electric, gas and steam               | CM-2050 TOUCH II | CM-2650 TOUCH II | CM-3350 TOUCH II |
| Ø 500 mm                 | With rear exit /<br>With lengthfolder | CM-2050 TOUCH II | CM-2650 TOUCH II | CM-3350 TOUCH II |

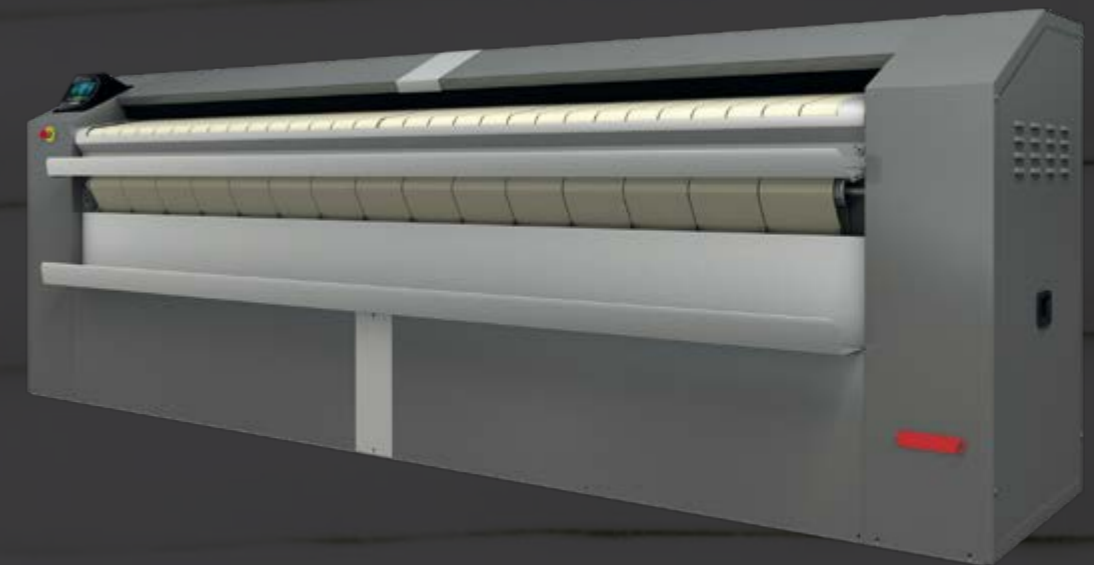
  

| FLATWORK IRONERS   Ø 650 |                                       |                  |                  |                  |
|--------------------------|---------------------------------------|------------------|------------------|------------------|
| ROLL DIAMETER            | HEATING                               | ROLL LENGTH      |                  |                  |
|                          |                                       | 2000 mm          | 2600 mm          | 3300 mm          |
| Ø 650 mm                 | Electric, gas and steam               | CM-2065 TOUCH II | CM-2665 TOUCH II | CM-3365 TOUCH II |
| Ø 650 mm                 | With rear exit /<br>With lengthfolder | CM-2065 TOUCH II | CM-2665 TOUCH II | CM-3365 TOUCH II |

## DRYING - IRONING - FOLDING (opt.)



## DRYING - IRONING - FOLDING (opt.)



## CM

Ø 200 / 325 mm

- ✓ Designed to meet the requirements of hotels, healthcare institutions, nursing homes and on-premises laundries.
  - ✓ Dries and irons in a single operation.
  - ✓ Front feeding and exit of the linen.
  - ✓ Panels in stainless steel and grey skinplate.
  - ✓ Ø 200 model only electric. Width 1,40 m.
  - ✓ Ø 325 models electric and gas heating. Sizes 1,40 m / 1,60 m / 2 m.
  - ✓ Control: user friendly and simple P microprocessor.
- OPTIONS Ø 325 MM**
- EFFICIENT IRON: Humidity control with automatic ironing speed regulation.
  - Chrome plate roll.



## CM

Ø 500 mm

- ✓ Dries and irons in a single operation.
  - ✓ Front feeding and exit of the linen.
  - ✓ Heating: electric, gas (atmospheric or radiant burner) and steam.
  - ✓ Sizes: 2 m / 2,60 m / 3,30 m.
  - ✓ Control: new Touch II 7" touch screen microprocessor (10 preset programs).
  - ✓ Reverse roll standard
- OPTIONS**
- EFFICIENT IRON.
  - OPTIMAL IRON: High production system.
  - INTEGRATED LENGTHFOLDER.
  - Rear exit (only available with lengthfolder).
  - Chrome plate roll.



## CM

Ø 650 mm

- ✓ Dries and irons in a single operation.
  - ✓ Front feeding and exit of the linen.
  - ✓ Heating: electric, gas (only gas radiant burner on ø 650 mm) and steam.
  - ✓ Sizes: 2 m / 2,60 m / 3,30 m.
  - ✓ Control: new Touch II 7" touch screen microprocessor (10 preset programs).
  - ✓ Reverse roll standard
  - ✓ EFFICIENT IRON standard.
  - ✓ OPTIMAL IRON: High production system standard.
- OPTIONS**
- INTEGRATED LENGTHFOLDER.
  - Rear exit (only available with lengthfolder).
  - Chrome plate roll.

# ECOENERGY



## TOUCH II

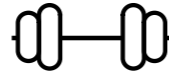
ONLY Ø 500 / 650 mm models

- ✓ User friendly and totally programmable **7" Touch II**
- ✓ **38 available languages**
- ✓ **5 preset programs**, possibility to create unlimited ones
- ✓ **DOMUS CONNECT communication kit**
- ✓ **Reverse roll standard**  
(not available in smaller ranges 200 and 325 mm)
- ✓ **USB Connection.** PC software free of charge for programming, traceability, data analyses...



## EFFICIENCY

- ✓ **EFFICIENT IRON:** automatic regulation of ironing speed according to residual moisture, energy economizer (option on Ø 500 mm)
- ✓ **OPTIMAL FEEDING:** automatic adjustment of ironing speed, lowered for feeding and increased for higher production up to 15 m/min. (option on Ø 500 mm and standard on Ø 650 mm)
- ✓ **Good heat conduction** thanks to the material of the roll and its thickness: greater control of the energy expenditure
- ✓ **Automatic shutdown at 80°C:** increases the life time of ironing belts
- ✓ Fumes circulation circuit from the bottom reducing the energy consumption
- ✓ Accurate temperature control thanks to the microprocessor: lower energy consumption
- ✓ **Gas RADIANT BURNER heated model:** hourly output is increased by 25 %: time and energy savings



## ROBUSTNESS

- ✓ **Roll driving by inverter:** smooth operation preventing the wear of belts and mechanical elements
- ✓ **Skinplate and stainless steel panels: long lasting**
- ✓ **Nomex quality feeding and ironing belts: resistant to high temperature**
- ✓ **Optional:**  
Chrome plate cylinder: anti corrosive, more durable



## VERSATILITY

ONLY Ø 500 / 650 mm models

- ✓ **REAR EXIT**  
(option available only with lengthfolder)
- ✓ **INTEGRATED LENGTHFOLDER** (as option)
- ✓ Possibility of adding an independent cross folder and stacker
- ✓ Gas radiant burner model: flexibility for a better production or adaptation to high level places



## MAINTENANCE

- ✓ **Easy access to all components** on both sides of the machine
- ✓ **Minimal encumbrance:** fits in most of areas, and the optional folder is also built-in
- ✓ **One electrical connection and exhaust required**
- ✓ **Remote communication:** quicker intervention
- ✓ Tilting feeding trays for easy maintenance



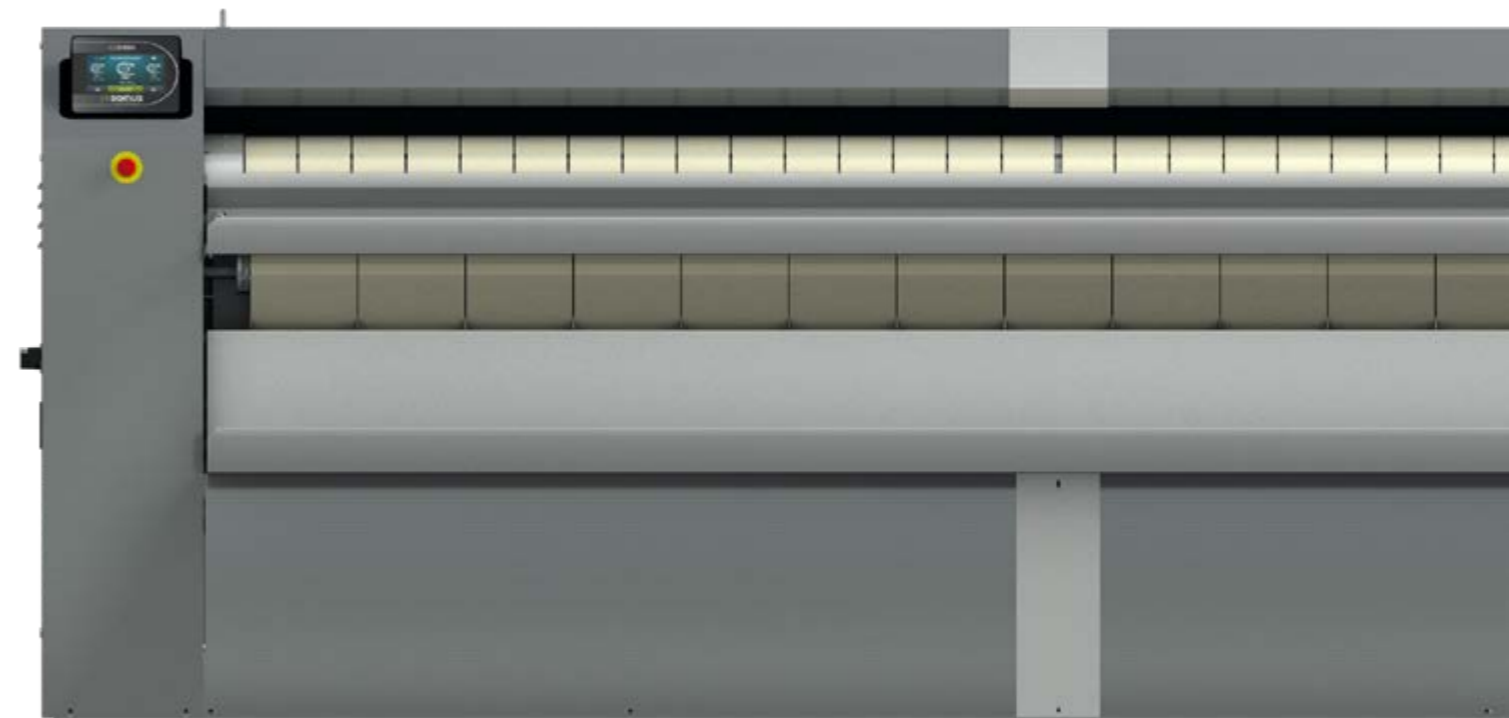
## ERGONOMICS

- ✓ **Acoustic comfort:** 65 dba max.
- ✓ Panels in skinplate and stainless steel: easy to clean, better hygiene (RABC compliance)
- ✓ Stainless steel trays, foldable
- ✓ **Appropriate height of feeding:**  
990 mm (Ø 200 and 325 mm)  
1.120 mm (Ø 500 and 650 mm)
- ✓ TOUCH II Ø 500 & 650 mm, fully programmable
- ✓ **Minimal encumbrance:** save space, fits in most of areas
- ✓ **User-friendly and easy to read controls**  
P Ø 200 & 325 mm, selection of time and temperature



## CONNECTIVITY

- ✓ **Remote technical service**  
Machine monitoring, machine error warning, management for traceability and statistics  
Remote desk and data recovery for technicians and maintenance, software update, etc.
- ✓ **Management for laundries:**  
Our DOMUS IoT solution allows you to manage your laundry business (i.e. create discount programs for customers, get statistics, traceability and laundry monitoring)



 Programmable microprocessor  
**TOUCH II**

A microprocessor designed to offer EFFICIENCY, VERSATILITY and CONNECTIVITY.

 **ROBUSTNESS**

Designed to last

User friendly and totally programmable microprocessor with **7" Touch II screen**

Only in Ø 500 / 650 mm models

**38 languages**

Available and easy to configure, thanks to DOMUS aim to be accessible to everyone.



**Roll driving by inverter**

Smooth operation preventing the wear of belts and mechanical elements

**Skinplate and stainless steel panels:**

long lasting

**USB Connection**

PC software free of charge for programming, traceability, data analysis...

**Nomex quality feeding and ironing belts:**

resistant to high temperature

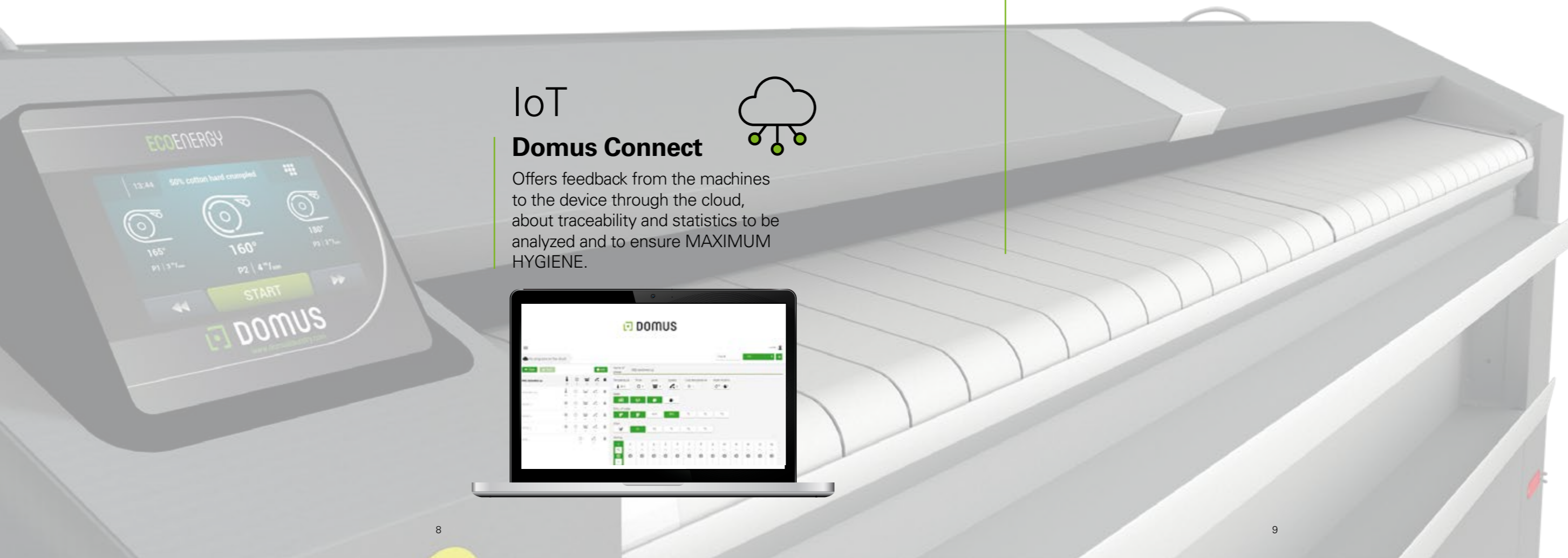
**Chrome plate cylinder as option:**

anti corrosive, more durable

**IoT Domus Connect**



Offers feedback from the machines to the device through the cloud, about traceability and statistics to be analyzed and to ensure MAXIMUM HYGIENE.



# EFFICIENCY

The new eco-energy ranges come with several energy and time saving features

## Efficient iron

automatic regulation of ironing speed according to residual moisture, energy economizer (option on Ø 325 and 500 mm). Standard on Ø 650 mm

## Good heat conduction

thanks to the material of the roll and its thickness: greater control of the energy expenditure

## Optimal feeding

automatic adjustment of ironing speed, lowered for feeding and increased for higher production up to 15 m/min. (option on Ø 500 mm and standard on Ø 650 mm)



## Automatic shutdown at 80 °C

increases the life time of ironing belts

## Reducing the energy consumption

by fumes circulation circuit from the bottom

## Gas radiant burner heated model

hourly output is increased by 25 %: time and energy savings

## Accurate temperature control

thanks to the microprocessor (except steam models): lower energy consumption



# CONNECTIVITY



## Distributors

As a distributor, good customer service reflects on your good image and their loyalty.

The **DOMUS Connect** solution gives added value to the machines and to business, with multiple benefits at your convenience: an argument in favour of why your customers should choose DOMUS machines.

**+ information + flexibility + control**



## Technical service

Remote information about the state of the machine, error reports, historical data, to facilitate instant diagnosis and software updates at any time, and to reduce the need for on site visits and technical intervention.

**+ information + precision + control**

## Owners

**DOMUS Connect** gives you the peace of mind of having control of your business. All you need to do is connect your machines to internet (using an Ethernet cable) and you can supervise your business from home or the office, without physically travelling to the laundry.

Customers require reliability and efficiency, and you want to offer them this. Traceability of the washing and drying cycles is vital for ensuring **maximum hygiene**.

Configure the dashboards, profiles and graphs which best help you to assess and closely monitor your business or businesses in real time. You can view historical or progress data, by machine or groups.

## DOMUSCONNECT



You will receive current and historical data about the machines, their operation, the current state and much more, so that you can offer optimum support to your customer.

**+ communication + usability + control**

**Energy**  
Energy optimisation is fundamental in a laundry. Our machines have been designed for greater energy savings with this in mind.

**Technology**  
We apply the latest technology to offer very efficient laundry machinery.



# VERSATILITY

New models with rear exit and lengthfolder to suit all needs



# ERGONOMICS

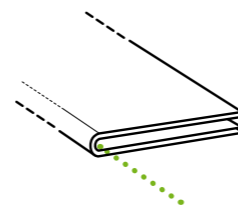
One of DOMUS concerns is a comfortable operation

### Rear exit

as option with the built-in lengthfolder

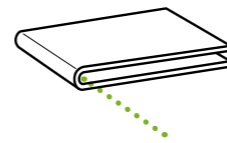
### Integrated lengthwise folder

same encumbrance for Ø 500 & 650 mm models. As option



### Cross folder

Possibility of adding an independent cross folder and stacker to increase productivity (only with model equipped with folder + rear exit)



### Acoustic comfort

65 dba max.

### Minimal encumbrance

save space, fits in most of areas

### Panels in skinplate

and stainless steel: easy to clean, better hygiene (RABC compliance)

### User friendly controls

P electronic control (Ø 200 & 325 mm): selection of speed and temperature.  
TOUCH II microprocessor (Ø 500 & 650 mm): fully programmable.

### Appropriate height of feeding

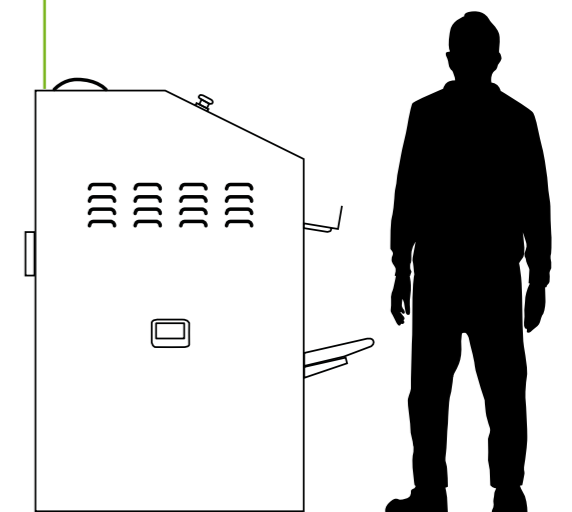
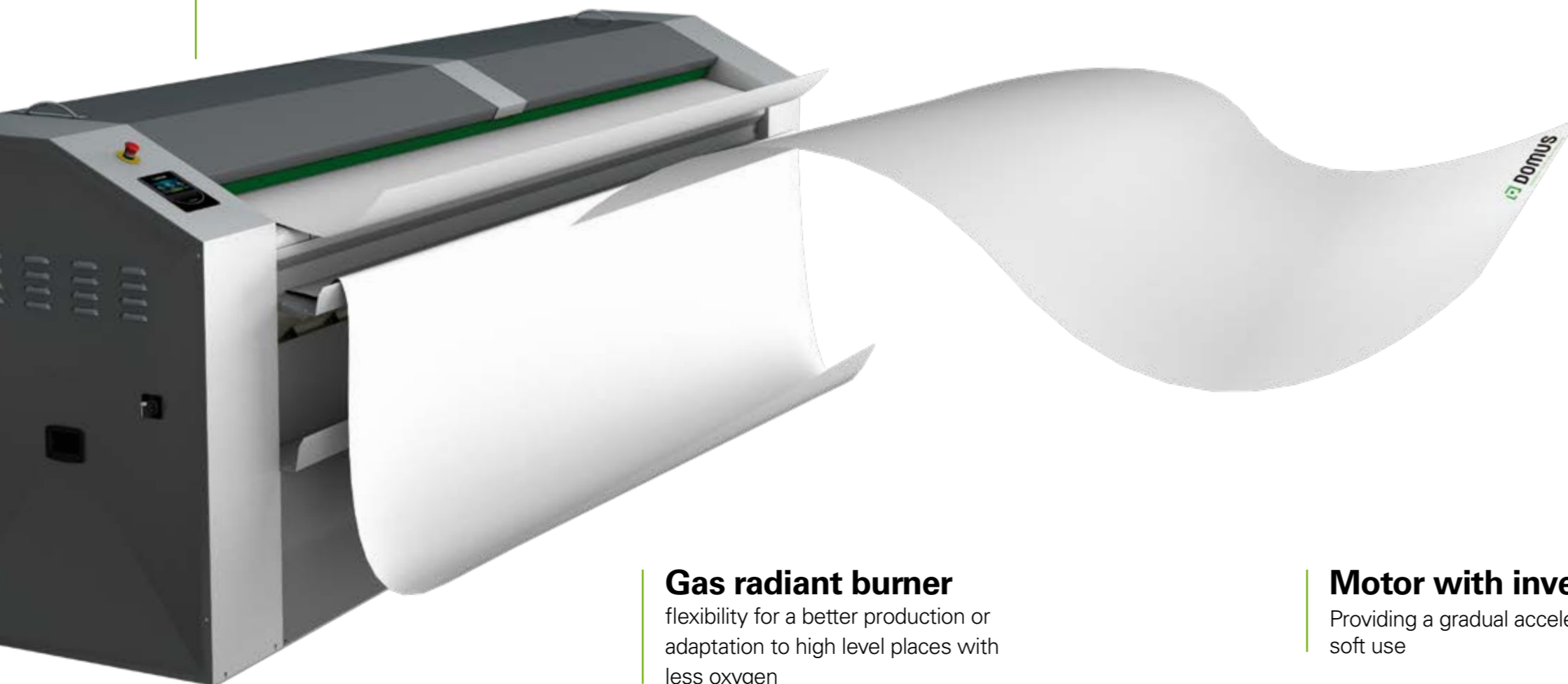
990 mm (Ø 200 & 325)  
1120 mm (Ø 500 & 650)

### Gas radiant burner

flexibility for a better production or adaptation to high level places with less oxygen

### Motor with inverter

Providing a gradual acceleration, soft use





# MAINTENANCE

DOMUS ironers are designed to offer an easy maintenance and reparability

**One electrical connection and exhaust required**

**Minimal encumbrance**  
fits in most of areas

**Easy access to all components**  
on both sides of the machine

**Remote communication**  
as option with TOUCH II,  
quicker intervention

**Technical menu with TOUCH II**



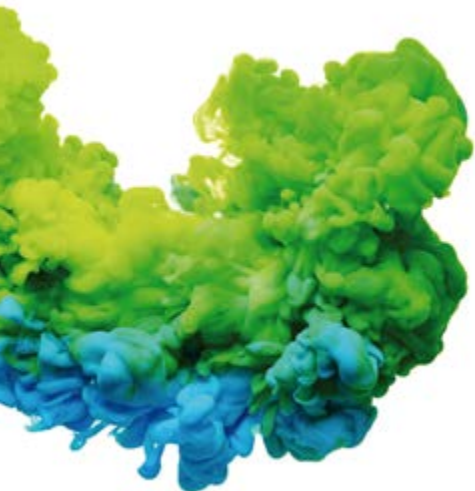
Back side of CM-3365

## Wall flatwork ironers technical data

|                                     | UNIT.                | Ø 200      | Ø 325      |            |            | Ø 500    |          |          | Ø 650    |          |          |       |
|-------------------------------------|----------------------|------------|------------|------------|------------|----------|----------|----------|----------|----------|----------|-------|
|                                     |                      | CM-1420    | CM-1432    | CM-1632    | CM-2032    | CM-2050  | CM-2650  | CM-3350  | CM-2065  | CM-2665  | CM-3365  |       |
| <b>GENERAL DETAILS</b>              |                      |            |            |            |            |          |          |          |          |          |          |       |
| Theoretical production 45% humidity | Kg/h                 | 12-14      | 10-20      | 20-30      | 30-40      | 50-70    | 60-80    | 80-120   | 65-90    | 80-104   | 104-160  |       |
| Evaporation power                   | l/h                  | 8-10       | 7-14       | 14 - 21    | 21 - 28    | 35 - 49  | 42 - 56  | 56 - 84  | 45-63    | 55 - 73  | 73 - 110 |       |
| Roll Ø                              | mm                   | 200        | 325        | 325        | 325        | 500      | 500      | 500      | 650      | 650      | 650      |       |
| Working width                       | mm                   | 1400       | 1400       | 1600       | 2000       | 2000     | 2600     | 3300     | 2000     | 2600     | 3300     |       |
| Height floor-feeding belts          | mm                   | 990        | 990        | 990        | 990        | 1120     | 1120     | 1120     | 1120     | 1120     | 1120     |       |
| Working speed                       | mt/min               | 1-5        | 1-6,5      | 1-6,5      | 1-6,5      | 1-8      | 1-8      | 1-8      | 1-15     | 1-15     | 1-15     |       |
| Control                             |                      | Electronic | Electronic | Electronic | Electronic | TOUCH II |          |          | TOUCH II |          |          |       |
| No. Programs                        | Nº                   | 7          | 7          | 7          | 7          | 5        | 5        | 5        | 5        | 5        | 5        |       |
| Rear exit + length folder           |                      | NO         | NO         | NO         | NO         | OPT      | OPT      | OPT      | OPT      | OPT      | OPT      |       |
| Large surface contact with linen    | º                    | 270        | 270        | 270        | 270        | 310      | 310      | 310      | 310      | 310      | 310      |       |
| <b>POWER</b>                        |                      |            |            |            |            |          |          |          |          |          |          |       |
| Electric                            | Heating power        | kW         | 10,5       | 12         | 16,2       | 21       | 31,5     | 40,5     | 54       | 42       | 54       | 72    |
|                                     | Total electric power | kW         | 10,84      | 12,37      | 16,57      | 21,49    | 32,12    | 41,37    | 54,87    | 43,05    | 55,05    | 73,05 |
| Gas                                 | Heating power        | kW         | ----       | 14         | 22,5       | 30       | 40       | 55       | 69       | 52       | 69       | 78    |
|                                     | Total electric power | kW         | ----       | 0,37       | 0,37       | 0,49     | 0,62     | 0,87     | 0,87     | 1,05     | 1,05     | 1,05  |
| Steam                               | Heating power        | kW         | ----       | ----       | ----       | ----     | 50       | 64       | 81       | 60       | 76       | 97    |
|                                     | Total electric power | kW         | ----       | ----       | ----       | ----     | 0,62     | 0,87     | 0,87     | 1,05     | 1,05     | 1,05  |
|                                     | Consumption          |            | ----       | ----       | ----       | ----     | 50*      | 67*      | 85*      | 60*      | 80*      | 102*  |
| Roll motor power                    | kW                   | 0,25       | 0,25       | 0,25       | 0,25       | 0,37     | 0,37     | 0,37     | 0,55     | 0,55     | 0,55     |       |
| Fan motor power                     | kW                   | 0,09       | 0,12       | 0,12       | 0,12 x 2   | 0,25     | 0,25 x 2 | 0,25 x 2 | 0,25 x 2 | 0,25 x 2 | 0,25 x 2 |       |
| <b>CONNECTIONS</b>                  |                      |            |            |            |            |          |          |          |          |          |          |       |
| Ø Gas inlet                         | BSP                  | ----       | 1/2"       | 1/2"       | 1/2"       | 1"       | 1"       | 1"       | 1/2"     | 1/2"     | 1/2"     |       |
| Ø Steam inlet                       | BSP                  | ----       | ----       | ----       | ----       | 3/4"     | 3/4"     | 3/4"     | 3/4"     | 3/4"     | 3/4"     |       |
| Ø Condensed (steam models)          | BSP                  | ----       | ----       | ----       | ----       | 1/2"     | 1/2"     | 1/2"     | 1/2"     | 1/2"     | 1/2"     |       |
| <b>NET DIMENSIONS</b>               |                      |            |            |            |            |          |          |          |          |          |          |       |
| Width                               | mm                   | 1878       | 1960       | 2210       | 2560       | 2845     | 3445     | 4145     | 2845     | 3445     | 4145     |       |
| Depth (without trays)               | mm                   | 444        | 644        | 644        | 644        | 1070     | 1070     | 1070     | 1070     | 1070     | 1070     |       |
| Height                              | mm                   | 1335       | 1107       | 1107       | 1107       | 1420     | 1420     | 1420     | 1420     | 1420     | 1420     |       |
| Weight                              | Kg                   | 180        | 300        | 355        | 405        | 930      | 1180     | 1430     | 1189     | 1517     | 1765     |       |
| <b>PACKING DIMENSIONS</b>           |                      |            |            |            |            |          |          |          |          |          |          |       |
| Width                               | mm                   | 2130       | 2340       | 2340       | 2780       | 3145     | 3745     | 4445     | 3145     | 3745     | 4445     |       |
| Depth (without trays)               | mm                   | 770        | 770        | 770        | 770        | 1153     | 1153     | 1153     | 1153     | 1153     | 1153     |       |
| Height                              | mm                   | 1570       | 1400       | 1400       | 1400       | 1672     | 1672     | 1672     | 1672     | 1672     | 1672     |       |
| Weight                              | Kg                   | 220        | 335        | 375        | 428        | 972      | 1470     | 1480     | 1231     | 1567     | 1815     |       |
| Volume                              | m³                   | 2,57       | 2,52       | 2,52       | 3          | 6,06     | 7,22     | 8,57     | 6,06     | 7,22     | 8,57     |       |
| <b>OTHERS</b>                       |                      |            |            |            |            |          |          |          |          |          |          |       |
| Fume outlet                         | Nº                   | 1          | 1          | 1          | 2          | 1        | 2        | 2        | 2        | 2        | 2        |       |
| Ø Fume outlet                       | mm                   | 83         | 98         | 98         | 98         | 153      | 153      | 153      | 153      | 153      | 153      |       |
| Air flow                            | m³/h                 | 300        | 500        | 500        | 1000       | 600      | 1200     | 1200     | 1200     | 1200     | 1200     |       |
| Noise Level                         | dB                   | 55         | 60         | 60         | 63         | 65       | 65       | 65       | 65       | 65       | 65       |       |

\*DOMUS reserves the right to modify the technical data without notice.





# **DOMUS**

WINNING THE FUTURE THROUGH INNOVATION

C. Energia, 12 - Pol. Ind. La Quintana  
08504 Sant Julià de Vilatorca  
BARCELONA (SPAIN)

## SALES DEPARTMENT

T. +34 93 812 27 96  
M. +34 649 482 730  
domus@domuslaundry.com  
export@domuslaundry.com

## AFTER SALES DEPARTMENT

T. +34 93 888 76 73  
sat@domuslaundry.com

## PARTS DEPARTMENT

T. +34 93 888 76 83  
parts@domuslaundry.com

## ONNERA GROUP



[WWW.DOMUSLAUNDRY.COM](http://WWW.DOMUSLAUNDRY.COM)

