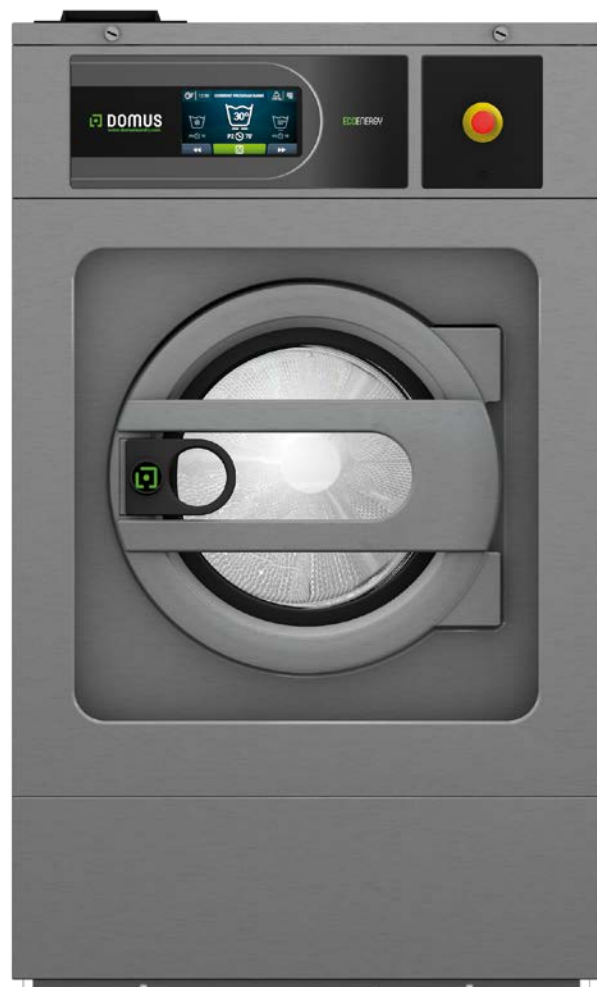


# Front loading washer extractors



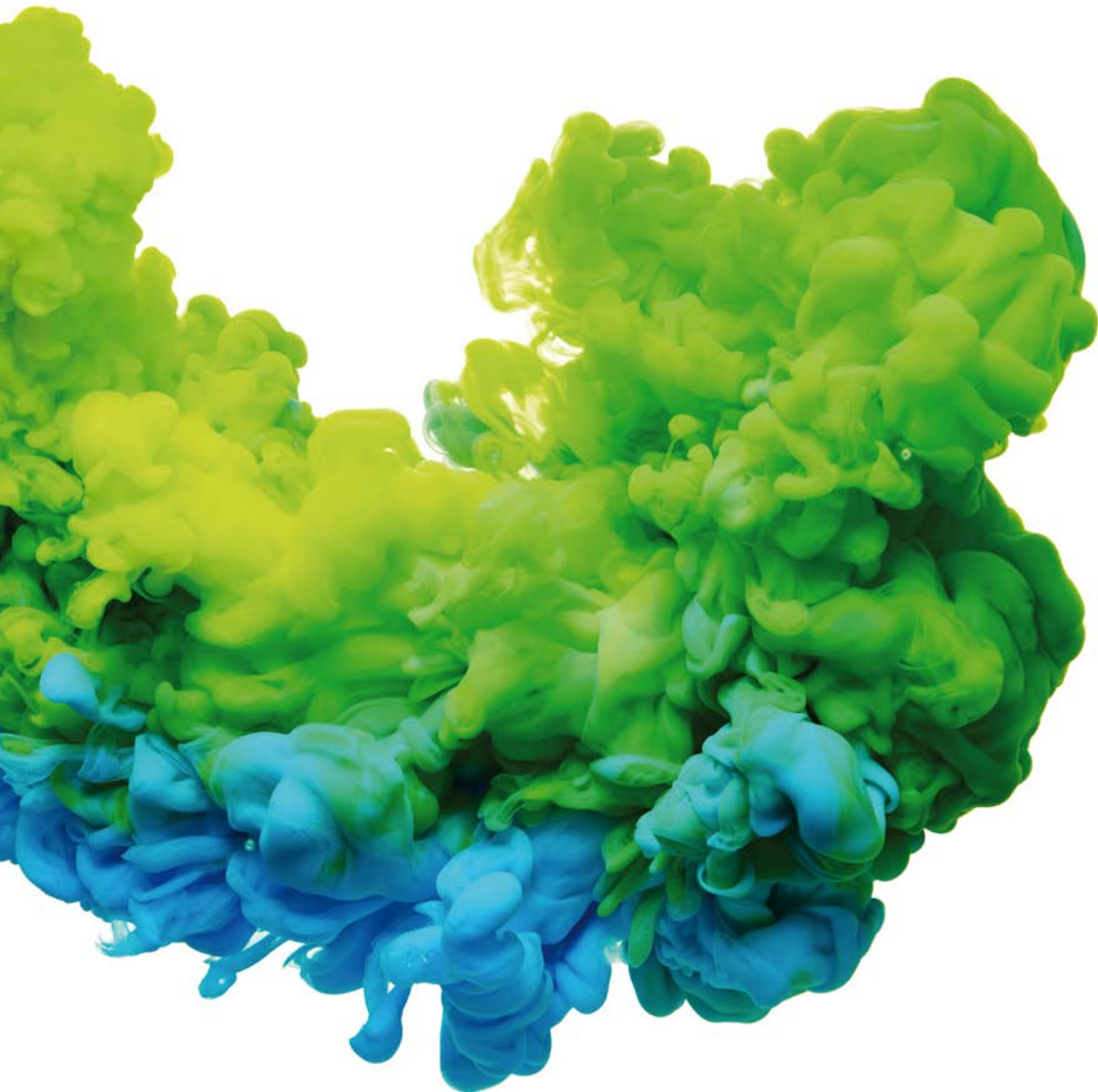
**ECOVOLUTION**  
by **DOMUS**

# Front washers

The new DOMUS high, medium and low spin front washers offer an advanced design and technology, combined with a huge variety of accessories and options.

High G Factor, the touchscreen TOUCH II microprocessor with many features, connectivity, versatility.

They are designed to satisfy the laundry needs of the most varied businesses, always taking into consideration efficiency and productivity as main goals.



## ECOVOLUTION by DOMUS



HIGH SPIN WASHERS   G FACTOR 450										
CONTROL TYPE	HEATING	CAPACITY								
		10-11 kg	13-14 kg	18-20 kg	25-28 kg	35-39 kg	42-47 kg	60-66 kg	95-105 kg	115-128 kg
TOUCH II Programmable Control	Electric, hot water and steam	DHS-11 TOUCH II	DHS-14 TOUCH II	DHS-18 TOUCH II	DHS-27 TOUCH II	DHS-35C TOUCH II	DHS-45C TOUCH II	DHS-60 TOUCH II	DHS-100C TOUCH II	DHS-120C TOUCH II



MEDIUM SPIN WASHERS   G FACTOR 300					
CONTROL TYPE	HEATING	CAPACITY			
		10-11 kg	13-14 kg	18-20 kg	25-28 kg
TOUCH II Programmable Control	Electric, hot water and steam	DMS-11 TOUCH II	DMS-14 TOUCH II	DMS-18 TOUCH II	DMS-27 TOUCH II



LOW SPIN WASHERS   G FACTOR 200								
CONTROL TYPE	HEATING	CAPACITY						
		10-11 kg	13-14 kg	18-20 kg	25-28 kg	35-39 kg	42-47 kg	60-66 kg
TOUCH II Programmable Control	Electric, hot water and steam	DLS-11 TOUCH II	DLS-14 TOUCH II	DLS-18 TOUCH II	DLS-27 TOUCH II	DLS-35C TOUCH II	DLS-45C TOUCH II	DLS-60 TOUCH II

NOTE: All models can be easily converted to coin mode except DHS-60, 100C and 120C, with a coin kit, token kit, with central pay or the payment APP thanks to IOT.



## HIGH SPIN

## MEDIUM SPIN

## LOW SPIN



## DHS

### G FACTOR 450/350

**HIGH SPIN RANGE**

- ✓ Soft mounted washers, free standing
- ✓ Panels in skinplate
- ✓ R.P.M. between 678 - 1.231
- ✓ Easy to install, no needs of fixation to the floor, no extra costs
- ✓ Savings due to high extraction of water (45% residual humidity)



## DMS

### G FACTOR 300

**MEDIUM SPIN RANGE**

- ✓ Hard mounted washers
- ✓ Anchoring to floor with anchoring base
- ✓ Panels in skinplate
- ✓ R.P.M. between 836 - 932
- ✓ Savings due to high extraction of water (55% residual humidity)



## DLS

### G FACTOR 200/150

**LOW SPIN RANGE**

- ✓ Hard mounted washers
- ✓ Anchoring to floor with anchoring base
- ✓ Panels in skinplate
- ✓ R.P.M. between 505 - 762
- ✓ Savings due to high extraction of water (65% residual humidity)



# ECOENERGY



## TOUCH II

- ✓ **TOUCH II**, user friendly and totally programmable microprocessor with a 7" touch screen and 29 preset programs
- ✓ **USB Connection**. PC software free of charge for programming, traceability, data analysis...
- ✓ **Remote communication**
- ✓ **Traceability standard**
- ✓ **Wet cleaning ready**
- ✓ **Videos on display: ads, instructions** (useful for coin laundry)
- ✓ **37 languages**
- ✓ **8 dosing signals as standard + optional 6 extra dosing signals**



## VERSATILITY

- ✓ **Make to order: customisation**  
New possibility to customise the machines from factory with the available options
- ✓ **OPL < > Coin / Token**  
Standard models easily transformable with coin/token kits
- ✓ **Electric < > Hot water**  
Standard electric models easily transformable to hot water models
- ✓ **Drain valve < > Pump**  
Standard models easily transformable  
Easy access and service
- ✓ **Wet cleaning**  
All washers have all features to use wet cleaning programs



## G FACTOR

- ✓ **High G-FACTOR for all range of washers comparing with competitors**  
**G-FACTOR 450** for High spin washers  
**G-FACTOR 300** for Medium spin washers  
**G-FACTOR 200** for Low spin washers
- ✓ **High G-Factor reduces residual moisture and drying time**



## CONNECTIVITY

- ✓ **Remote technical service**  
Machine monitoring, machine error warning, management for traceability and statistics. Remote desk and data recovery for technicians and maintenance, software update, etc.
- ✓ **Management for laundries: OPL and COIN**  
Our DOMUS IoT solution allows you to manage your laundry business (i.e. create discount programs for customers, get statistics, traceability and laundry monitoring).
- ✓ **Remote payment**: App for payments, cashless payment by scanning a QR code, promotions and machine booking



## EFFICIENCY

- ✓ **Water savings**  
Possibility of configuring three levels of savings
- ✓ **Optimal loading**: manual indication of weight
- ✓ **Intelligent Consumption**: automatic adjustment of water and soap consumptions (standard)
- ✓ **Prepared to be connected to water recovery tanks ECO-TANK**
- ✓ **Low water consumption**  
Standard washing program consumes less than 8,2 liters of water per kg and cycle
- ✓ **High G-FACTOR 450 for High spin machines**  
Reduced residual moisture > reduced drying time
- ✓ **Water RE-CYCLE** (recirculation of bath water)



## ERGONOMICS

- ✓ **Biggest door diameters in the market**  
Helpful, mainly for big capacity washers, for loading and unloading operations
- ✓ **Easy opening/closing system for door lock**
- ✓ **Plinths for 11, 14, 18, 27, 35 and 45 kg models**  
To align loading height (door base at 850 mm)



## MAINTENANCE

- ✓ **Hinged panel** Easy and ergonomic access to control panel parts
- ✓ **Equivalent parts**  
Most key parts are the same for all models parts are same for all models (contactors, electronic devices, gear...)
- ✓ **Easy access to parts for reparability**
- ✓ **Technical menu**: traceability, error diagnosis, machine monitoring, software update...



# Programmable microprocessor TOUCH II

User friendly and totally programmable microprocessor with **7" touch screen** and **29 preset programs**

Configuration of washing and spinning speed  
Complete regulation of water levels  
Regulable washing temperature from 20°C to 90 °C  
Standard WET CLEANING system

## Videos on display

Ads, instructions  
(useful for coin laundries)



## 8 dosing signals as standard + optional 6 extra dosing signals



## 37 languages

Available and easy to configure, thanks to DOMUS aim to be accessible to everyone.



## IoT

### Domus Connect

Offers feedback from the machines to the device through the cloud, about traceability and statistics to be analyzed and to ensure MAXIMUM HYGIENE



## USB Connection

PC software (Wash Control) free of charge for programming, traceability, data analysis...





## G-FACTOR

DOMUS washer extractors, whether high, medium or normal spin, are the ones with the highest G-Factor in the market, which ensures minimum residual moisture, and this translates into less energy costs during the drying cycle.

**High G-Factor reduces residual moisture and drying time**



## EFFICIENCY

DOMUS washer extractors offer a wide variety of efficient features to make sure that the washing cycles use only the needed water and chemicals, not more.

### Water savings

Possibility of configuring three levels of savings

### Low water consumption

A standard washing program consumes less than 8,2 litres of water per kg and cycle

### Optimal loading

### Intelligent consumption

Automatic adjustment of water and soap (standard)

### High G FACTOR 450 for high spin machines

Reduced residual moisture > reduced drying time

### Water re-cycle

Optional kit to increase the care of the linen: recirculation of the bath water, which increases the water flow with chemicals, shortens the cycle and improves the effectiveness without mechanical action



## ECOTANK

### Ready to be connected to water recovery tanks

Domus washer extractors, with Touch II microprocessor and double drain, can be connected to the new Domus Ecotank which allows the water recovery, achieving important water and energy savings.



### Energy

Energy optimisation is fundamental in a laundry.  
Our machines have been designed for greater energy savings with this in mind.

### Water

Saving water and using it properly are our goals, we do not want to waste it.  
We offer washing machines with optimised design and programming as well as a unique accessory, the ECOTANK: water recovery tanks.

### Chemicals

We design our washing machines with features to ensure the most accurate use of chemicals.

### Technology

We apply the latest technology to offer very efficient laundry machinery.



# VERSATILITY

To adapt to the needs of the different businesses and sectors with the smallest investment.

## Make to order: **customization**

New possibility to customize the machines from factory with the available options

## **Electric <> Hot water**

Standard electric models easily transformable to hot water models

## **Drain valve <> Pump**

Standard models easily transformable  
Easy access and service

## Wet Cleaning<sup>®</sup>

Thanks to DOMUS constant development, our models are equipped with the features to use WET CLEANING programs:

- ✓ Fully programmable TOUCH II
- ✓ Total control of temperature and water levels
- ✓ Programmable washing speed: very low (13 R.P.M.)
- ✓ Rhythm on/off 3seg/40seg
- ✓ Total control of dosing signal



**DOMUS washer extractors DHS-11 to DHS-45 are especially designed to be used in coin laundry businesses. This is available both for soft mounted machines DHS and hard mounted machines DMS and DLS.**

## **OPL <> COIN**

A new feature of Domus washers is its easy transformation from an OPL to a COIN machine.

**Three available options:**

# 1



### **Coin / Token**

There are several kits depending on the currency of each country, which can be used with a token or with a new mechanical coin kit. Both to be ordered with a coin box kit.

# 2



### **Central Pay**

The machines can be connected to the central pay with the central pay kit to control a single box with money.

# 3



### **Remote payment**

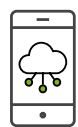
Machines ready for remote communication: allows programming, management and technical feedback. Multi payable systems: price updating, etc.

### **Open system**

Domus equipment is prepared to work with any external payment system (by means of multi-point data).



# CONNECTIVITY



## Distributors

As a distributor, good customer service reflects on your good image and their loyalty.

The **DOMUS Connect** solution gives added value to the machines and to business, with multiple benefits at your convenience: an argument in favour of why your customers should choose DOMUS machines.

**+ information + flexibility + control**



## Technical service

Remote information about the state of the machine, error reports, historical data, to facilitate instant diagnosis and software updates at any time, and to reduce the need for on site visits and technical intervention.

**+ information + precision + control**

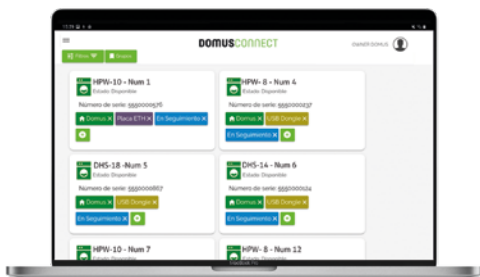


## Chemical associates

The information that DOMUS Connect provides about the wash cycles is of great assistance to the work of the chemical associates. An analysis of the processes and study of the results helps to ensure an optimum wash, reaching the primary objective: **maximum hygiene**.

**+ information + ease**

DOMUSCONNECT



You will receive current and historical data about the machines, their operation, the current state and much more, so that you can offer optimum support to your customer.

**+ communication + usability + control**



## Owners

**DOMUS Connect** gives you the peace of mind of having control of your business. All you need to do is connect your machines to internet (using an Ethernet cable) and you can supervise your business from home or the office, without physically travelling to the laundry.

## Client

Signing up to DOMUS LAUNDRY is the most convenient option for operating from your mobile phone: when you need a laundrette, select the nearest shop, reserve the machine and on completion, pay using your mobile phone.

You can also receive statistics about all your washes and take advantage of special deals.

## THE INTERNET OF THINGS

Customers require reliability and efficiency, and you want to offer them this. Traceability of the washing and drying cycles is vital for ensuring **maximum hygiene**.

Fast action implies efficiency for your business. Confirm technical information such as the state of the machine, historical data, breakdowns and errors, in order to have the machine back up and running as fast as possible.

Configure the dashboards, profiles and graphs which best help you to assess and closely monitor your business or businesses in real time. You can view historical or progress data, by machine or groups.

Share the information and management with whoever you choose: internal or external technicians, collaborators, for the mutual benefit of all.

Prepare special offers, send out news and reach your customers directly to win their loyalty.



DOMUSLAUNDRY

### Extremely safe communication

The **APP** notifies you of the end of the cycle via e-mail.

You will receive special offers, discounts and news conveniently on your mobile phone.

Manage and organise your expenditure with information such as accumulated turnover.

**APP** with payment gateway, payments using QR code.







## ERGONOMICS

As health and safety at work had become an important issue, our equipment is designed to be the most comfortable for the user.

### Biggest door diameters in the market

Helpful, mainly for big capacity washers, for loading and unloading the garments

### Easy opening/closing system for door lock

### Plinths for 11, 14, 18, 27, 35 and 45 kg models

To align loading height (door base at 850 mm)

### Reversible door



## MAINTENANCE

One of DOMUS concerns is to make life easier for our clients. That includes offering quality equipment and parts of reputed brands, which demand little maintenance.

### Easy access for reparability

Washers are designed to offer an easy maintenance and reparability

### Equivalent parts

Most key parts are the same for all models (contactors, electronic devices, gear,...)

### Hinged panel

Easy and ergonomic access to the panel


### Technical menu

Machine monitoring, machine error warning, management for traceability and statistics. Remote desk and data recovery for technicians and maintenance, software update, etc.



Washer extractors technical data

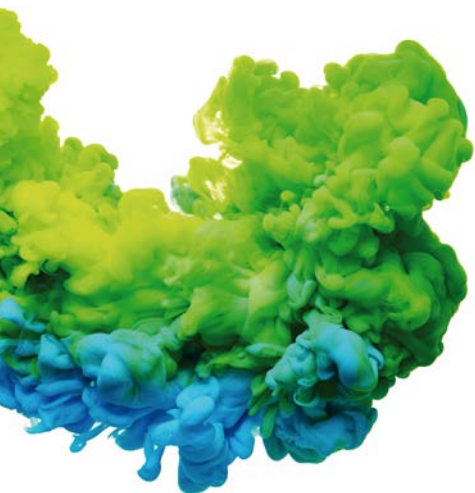
HIGH SPIN										
	UNIT.	DHS-11	DHS-14	DHS-18	DHS-27	DHS-35C	DHS-45C	DHS-60	DHS-100C	DHS-120
DRUM										
Load capacity (kg) 1:9 / 1:10	Kg	11/10	14/13	20/18	28/25	39/35	47/42	67/60	105/95	128/115
Volume	l	100	130	180	250	350	420	600	950	1150
Diameter	mm	532	620	700	770	860	860	1048	1360	1360
Depth	mm	425	430	470	530	602	723	684	654	792
GENERAL DETAILS										
Washing speed / Spining speed	r.p.m.	50/1.231	50/1.138	47/1.071	45/1.024	42,5/966	42,5/966	38/875	34/678	34/678
G Factor	-	450	450	450	450	450	450	450	350	350
Noise level	dB	< 70	< 70	< 70	< 70	< 70	< 70	< 70	< 70	< 70
Coin laundry version	-	YES	YES	YES	YES	YES	YES	NO	NO	NO
Double drainage	-	EXT.-OPT	OPT.	OPT.	OPT.	OPT.	OPT.	OPT.	OPT.	OPT.
Weighing System	-	OPT.	OPT.	OPT.	OPT.	OPT.	OPT.	OPT.	OPT.	OPT.
Tilting System		NO	NO	NO	NO	NO	NO	OPT.	OPT.	OPT.
SLUICE option	-	NO	NO	NO	NO	NO	NO	NO	NO	NO
DOOR										
Height center door / Height base door	mm	630/370	700 / 440	765 / 450	865 / 560	885 / 540	885 / 540	1.190 / 830	1.330 / 900	1.330 / 900
Diameter	mm	373	373	460	460	560	560	560	700	700
POWER										
Motor	kW	0,75	1,1	2,2	4	6	6	11	15	15
Electric heating power	kW	6	9	12	18	21	21	36	-	-
Total electric power (electric model)	kW	6,25	9,4	12,75	19,2	23	23	40	-	-
Total electric power (steam model)	kW	0,75	1,1	2,2	4	6	6	11	15	15
CONNECTIONS										
Steam intake (steam mod.)	inch	1/2"	1/2"	1/2"	3/4"	3/4"	3/4"	3/4"	1-1/4"	1-1/4"
Water intake	inch	3/4"	3/4"	3/4"	3/4"	3/4"	3/4"	1"	1-1/2"	1-1/2"
Drain	inch	3"	3"	3"	3"	3"	3"	3"	4"	4"
DIMENSIONS										
Width	mm	692	788	884	979	1.095	1.095	1.478	1.815	1.815
Depth	mm	788	869	913	1.041	1.184	1.304	1.444	1.690	1.828
Height	mm	1.185	1.307	1.415	1.553	1.598	1.598	1.945	2.245	2.245
Net weight	kg	230	250	360	490	750	800	1.400	3.900	3.950
PACKING DIMENSIONS										
Width	mm	730	850	945	1.040	1.165	1.165	1.540	1.900	1.900
Depth	mm	1.000	1.010	1.030	1.160	1.230	1.480	1.580	1.940	1.940
Height	mm	1.417	1.560	1.700	1.850	1.920	1.920	1.970	2.290	2.290
Gross weight	kg	239	283	393	545	820	870	1.520	4.050	4.100
Volume	m³	1,03	1,34	1,65	2,23	2,75	3,31	4,79	8,44	8,44

<div> MEDIUM SPIN</div>						
	UNIT.	DMS-11	DMS-14	DMS-18	DMS-27	
DRUM						
Load capacity (kg) 1:9 / 1:10	Kg	11/10	14/13	20/18	28/25	
Volume	l	100	130	180	250	
Diameter	mm	620	620	700	770	
Depth	mm	330	430	470	530	
GENERAL DETAILS						
Washing speed / Spining speed	r.p.m.	50/932	50/929	47/874	40/836	
G Factor	-	300	300	300	300	
Noise level	dB	< 70	< 70	< 70	< 70	
Coin laundry version	-	YES	YES	YES	YES	
Double drain	-	EXT,	EXT,	OPT.	OPT.	
Weighing System	-	NO	NO	NO	NO	
Tilting System		NO	NO	NO	NO	
SLUICE option	-	NO	NO	NO	NO	
DOOR						
Height center door / Height base door	mm	570/310	570/310	655 / 348	700 / 400	
Diameter	mm	373	373	460	460	
POWER						
Motor	kW	1,1	1,1	2,2	3	
Heating (Electric model)	kW	6	9	12	18	
Max. power (Electric model)	kW	6,3	9,5	12,75	19	
Max. power (Steam and HW model)	kW	1,1	1,1	2,2	3	
CONNECTIONS						
Steam intake (steam mod.)	inch	1/2"	1/2"	1/2"	3/4"	
Water intake	inch	3/4"	3/4"	3/4"	3/4"	
Drain	inch	3"	3"	3"	3"	
DIMENSIONS						
Width	mm	719	719	788	884	
Depth	mm	684	830	840	1.011	
Height	mm	1.158	1.158	1.307	1.340	
Net weight	kg	217	239	281	340	
PACKING DIMENSIONS						
Width	mm	800	800	840	930	
Depth	mm	990	990	1.010	1.150	
Height	mm	1.350	1.350	1.500	1.523	
Gross weight	kg	225	247	301	370	
Volume	m³	1,07	1,07	1,3	1,6	

LOW SPIN						
DLS-11	DLS-14	DLS-18	DLS-27	DLS-35C	DLS-45C	DLS-60
11/10	14/13	20/18	28/25	39/35	47/42	67/60
100	130	180	250	350	420	600
620	620	700	770	860	860	1048
330	430	470	530	602	723	684
50/762	50/762	47/714	40/682	45/644	45/644	42,5/505
200	200	200	200	200	200	150
< 70	< 70	< 70	< 70	< 70	< 70	< 70
YES	YES	YES	YES	YES	YES	YES
NO	OPT.	OPT.	OPT.	OPT.	OPT.	OPT.
NO	NO	NO	NO	NO	NO	NO
NO	NO	NO	NO	NO	NO	NO
YES	YES	YES	YES	YES	YES	NO
570/310	570/310	655 / 348	700 / 400	735 / 440	735 / 440	900 / 540
373	373	460	460	560	560	560
1,1	1,1	2,2	3	4	6	5,5
6	9	12	18	21	21	36
6,3	9,5	12,75	19	22	23	38
1,1	1,1	2,2	3	4	6	5,5
1/2"	1/2"	1/2"	3/4"	3/4"	3/4"	3/4"
3/4"	3/4"	3/4"	3/4"	3/4"	3/4"	3/4"
3"	3"	3"	3"	3"	3"	3"
719	719	788	884	979	979	1225
684	830	840	965	1.066	1.200	1.279
1.158	1.158	1.307	1.340	1.411	1.411	1.640
217	239	281	340	473	523	930
800	800	840	930	1.050	1.050	1.360
850	990	1.010	1.150	1.250	1.480	1.480
1.350	1.350	1.500	1.523	1.670	1.670	1.880
225	247	301	370	503	553	1.050
1,07	1,07	1,3	1,6	2,2	2,68	3,78

\*DOMUS reserves the right to modify the technical data without notice.





WINNING THE FUTURE THROUGH INNOVATION

C. Energia, 12 - Pol. Ind. La Quintana  
08504 Sant Julià de Vilatorrada  
BARCELONA (SPAIN)

#### SALES DEPARTMENT

T. +34 93 812 27 96  
M. +34 649 482 730  
domus@domuslaundry.com  
export@domuslaundry.com

#### AFTER SALES DEPARTMENT

T. +34 93 888 76 73  
sat@domuslaundry.com

#### PARTS DEPARTMENT

T. +34 93 888 76 83  
parts@domuslaundry.com

**ONNERA** GROUP



[WWW.DOMUSLAUNDRY.COM](http://WWW.DOMUSLAUNDRY.COM)

