



WALL FLATWORK IRONERS

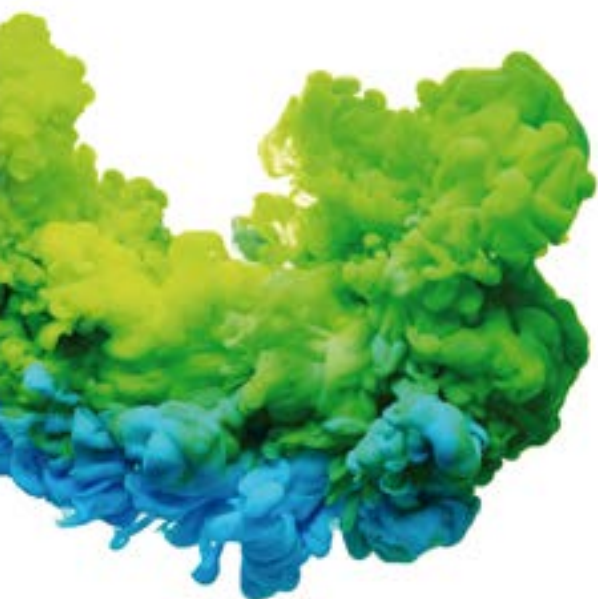
ECOVOLUTION
by **DOMUS**

Unique solutions for every space and need

DOMUS presents a wide range of flatwork ironers, a perfect and innovative solution for the drying, ironing and folding of the flatwork, for all type of customers.

Domus ironers are conceived to offer the best performance and productivity with noticeable energetic efficiency and time-saving options. For instance the Efficient Iron (humidity control), the New TOUCH II (only in Ø 500 / 650 mm models) and its many outstanding features: radiant gas burner, rear exit and lengthfolder as options, connectivity features, versatility, etc.

There are four main ranges: Ø 200 and 325 mm / Ø 500 and 650 mm.



ECOVOLUTION

by DOMUS

FLATWORK IRONERS Ø 200					New
ROLL DIAMETER	HEATING	ROLL LENGTH			
		1400 mm	1600 mm	2000 mm	
Ø 200 mm	Electric	CM-1420 M	CM-1620 M	CM-2020 M	

FLATWORK IRONERS Ø 325					New
ROLL DIAMETER	HEATING	ROLL LENGTH			
		1400 mm	1600 mm	2000 mm	
Ø 325 mm	Electric and GA	CM-1432 M	CM-1632 M	CM-2032 M	

FLATWORK IRONERS Ø 325 ECO-ENERGY					New
ROLL DIAMETER	HEATING	ROLL LENGTH			
		2000 mm	2600 mm	3300 mm	
Ø 325 mm	Electric and GR	CM-2032 ECO-ENERGY M	CM-2632 ECO-ENERGY M	CM-3332 ECO-ENERGY M	

FLATWORK IRONERS Ø 500 ECO-ENERGY				
ROLL DIAMETER	HEATING	ROLL LENGTH		
		2000 mm	2600 mm	3300 mm
Ø 500 mm	Electric, GA (GR opt.) and steam	CM-2050 TOUCH II	CM-2650 TOUCH II	CM-3350 TOUCH II
Ø 500 mm	With rear exit / With lengthfolder	CM-2050 TOUCH II	CM-2650 TOUCH II	CM-3350 TOUCH II

FLATWORK IRONERS Ø 650 ECO-ENERGY				
ROLL DIAMETER	HEATING	ROLL LENGTH		
		2000 mm	2600 mm	3300 mm
Ø 650 mm	Electric, GR	CM-2065 TOUCH II	CM-2665 TOUCH II	CM-3365 TOUCH II
Ø 650 mm	With rear exit / With lengthfolder	CM-2065 TOUCH II	CM-2665 TOUCH II	CM-3365 TOUCH II

GA: Gas with atmospheric burner
GR: Gas with radiant burner

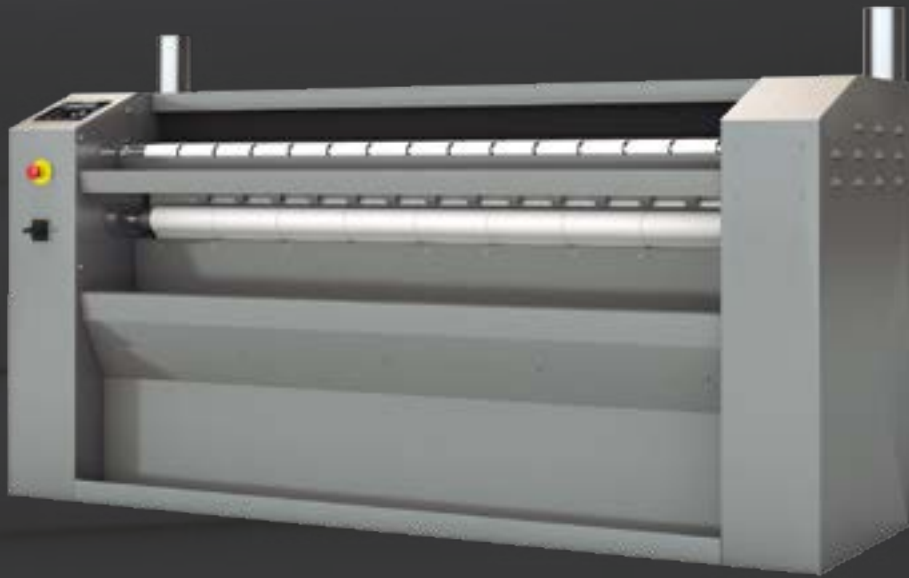
DRYING - IRONING

**CM**

Ø 200

- ✓ Dries and irons in a single operation.
- ✓ Front feeding and exit of the linen.
- ✓ Panels in stainless steel and grey skinplate.
- ✓ Heating: electric
- ✓ Roll length: 1,40 m / 1,60 m / 2,00 m.
- ✓ M electronic control.
- ✓ Nomex belts as standard.
- ✓ Ironing speed: 1,5-6 mts/min.
- ✓ Better collection of the linen.
- ✓ Easy installation.

DRYING - IRONING



CM

Ø 325 mm

- ✓ Dries and irons in a single operation.
- ✓ Front feeding and exit of the linen.
- ✓ Heating: electric, gas (atmospheric).
- ✓ Roll length: 1,40 m / 1,60 m / 2,00 m.
- ✓ M electronic control.
- ✓ Ironing speed: 1,5-10 mts/min.
- ✓ Reverse roll standard.

OPTIONS

EFFICIENT IRON.
Nickel-plated cylinder.



CM ECO-ENERGY

Ø 325 mm

- ✓ Dries and irons in a single operation.
- ✓ Front feeding and exit of the linen.
- ✓ Heating: electric, gas (radiant burner).
- ✓ Roll length: 2 m / 2,60 m / 3,30 m.
- ✓ M electronic control.
- ✓ Ironing speed: 1,5 - 12 mts/min.
- ✓ Reverse roll standard.

OPTIONS

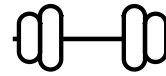
EFFICIENT IRON.
Nickel-plated cylinder.

ECOENERGY Ø 200 / 325 mm



M CONTROL

- ✓ **3 selectable operating modes:**
 - MANUAL MODE:** Selection of speed and temperature
 - AUTO MODE:** automatic adjustment of the ironing speed according to the temperature selected
 - EFFICIENT IRON** humidity mode (option for Ø 325 mm): automatic adjustment of ironing speed according to the humidity detected in the laundry



ROBUSTNESS

- ✓ **Roll driving by inverter:** smooth operation preventing the wear of belts and mechanical elements
- ✓ **Skinplate and stainless steel panels: long lasting**
- ✓ **Nomex quality feeding and ironing belts: resistant to high temperature**
- ✓ **Optional:** Nickel-plated cylinder: anti corrosive, more durable (not available in model 200 mm)



EFFICIENCY

- ✓ **EFFICIENT IRON:** automatic regulation of ironing speed according to residual moisture, energy economizer (option on Ø 325 mm)
- ✓ **Good heat conduction** thanks to the material of the roll and its thickness: greater control of the energy expenditure
- ✓ **Automatic shutdown at 80°C:** increases the life time of ironing belts
- ✓ Fumes circulation circuit from the bottom reducing the energy consumption
- ✓ Accurate temperature control thanks to the microprocessor: lower energy consumption
- ✓ **Gas RADIANT BURNER heated model:** hourly output is increased by 25 %: time and energy savings



VERSATILITY

- ✓ **Gas radiant burner model:** flexibility for a better production or adaptation to high level places (ECO-ENERGY range)



ERGONOMICS

- ✓ **Acoustic comfort:** 65 dba max.
- ✓ Panels in skinplate and stainless steel: easy to clean, better hygiene (RABC compliance)
- ✓ **Appropriate height of feeding:** 990 mm
- ✓ **Minimal encumbrance:** save space
- ✓ **New Electronic M Control:** easy to use



MAINTENANCE

- ✓ **Easy access to all components** on both sides of the machine
- ✓ **Compact design**



CONTROL M



Manual mode

selection of speed and temperature

Auto mode

automatic adjustment of the ironing speed according to the temperature selected

Efficient iron

option on Ø 325 models



EFFICIENCY

The new ECO-ENERGY ranges come with several energy and time saving features

Efficient iron

automatic regulation of ironing speed according to residual moisture, energy economizer (option on Ø 325)

Automatic shutdown at 80 °C

increases the life time of ironing belts

Good heat conduction

thanks to the material of the roll and its thickness: greater control of the energy expenditure

Reducing the energy consumption

by fumes circulation circuit from the bottom

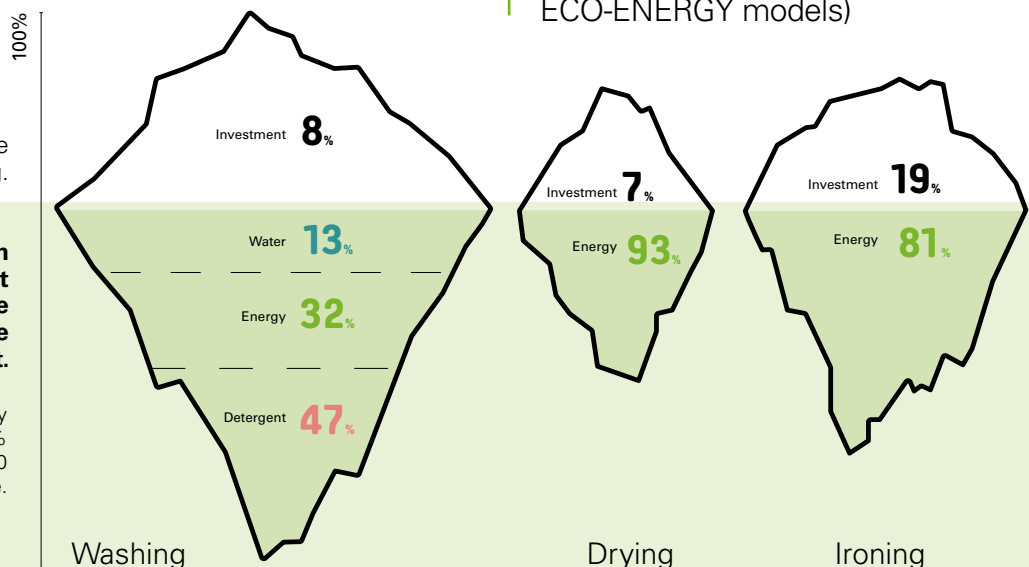
Gas radiant burner heated model

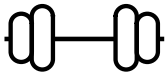
hourly output is increased by 25 %: time and energy savings (Ø 325 ECO-ENERGY models)

In a laundry, the machines are the visible part of an iceberg.

At Domus we pay attention to the iceberg part that cannot be seen, to optimize the expenses during the whole Life Cycle Cost.

Example of a standard laundry with 50% flat linen and 50% towelling, during the first 10 years of life.





ROBUSTNESS

Designed to last

Roll driving by inverter

Smooth operation preventing the wear of belts and mechanical elements

Skinplate and stainless steel panels:

long lasting

Nomex quality feeding and ironing belts:

resistant to high temperature

Nickel-plated cylinder as option:

anti corrosive, more durable



ERGONOMICS

One of DOMUS concerns is a comfortable operation

Acoustic comfort

65 dba max.

Panels in skinplate and inox

and stainless steel: easy to clean, better hygiene (RABC compliance)

Appropriate height of feeding

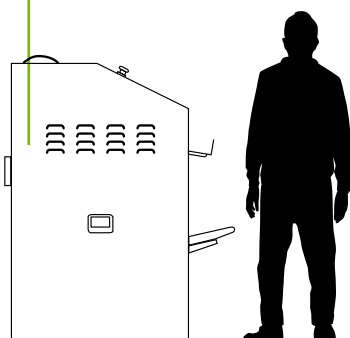
990 mm

User friendly controls

New M electronic control (Ø 200 / 325 mm) models: selection of speed and temperature.

Motor with inverter

Providing a gradual acceleration, soft use





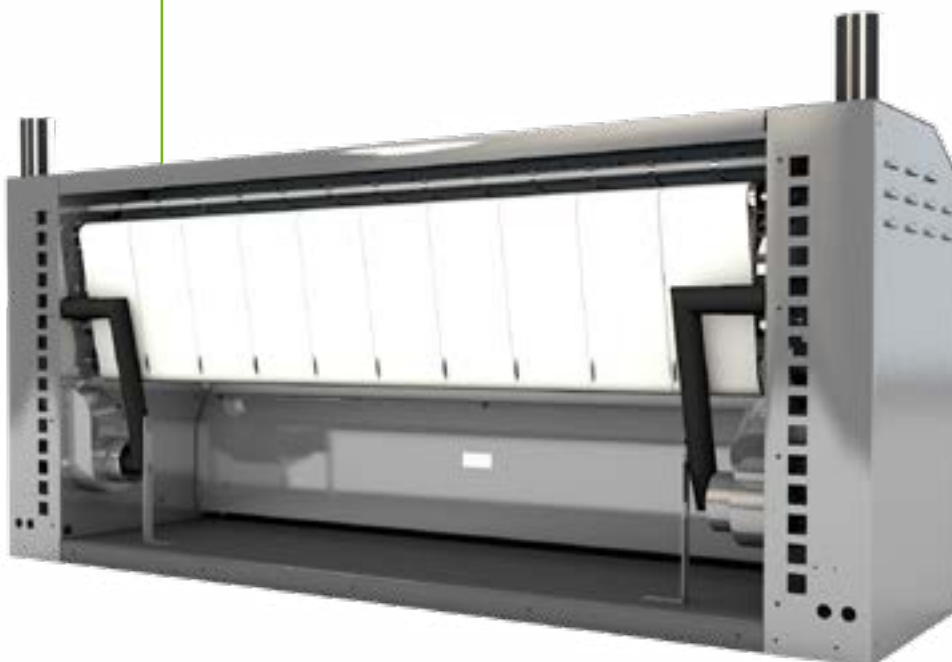
MAINTENANCE

DOMUS ironers are designed to offer an easy maintenance and reparability

One electrical connection and exhaust required

Minimal encumbrance
fits in most of areas

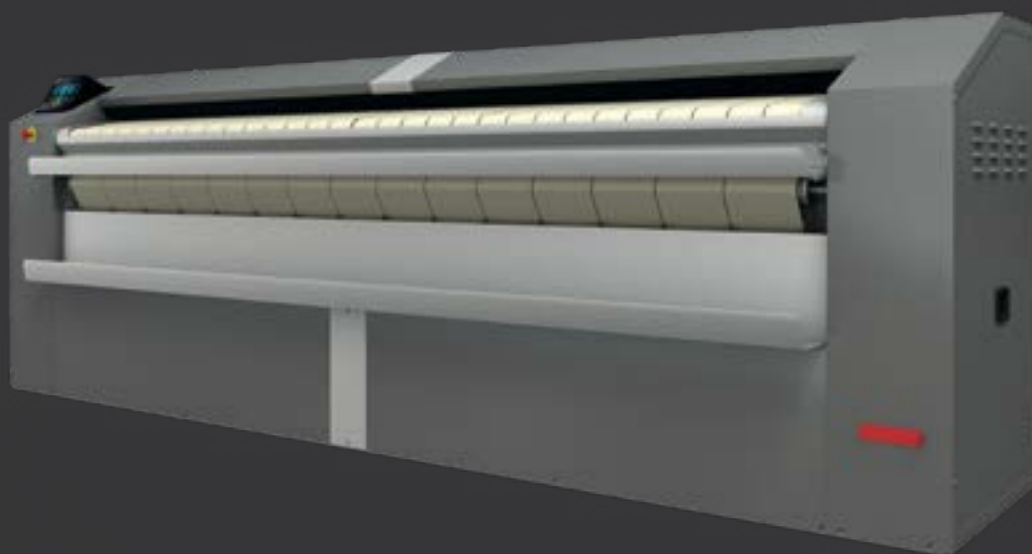
Easy access to all components
on both sides of the machine





TOUCH II CONTROL for Ø 500/650 mm

DRYING - IRONING - FOLDING (OPT.)



CM ECO-ENERGY

Ø 500 mm

- ✓ Dries and irons in a single operation.
- ✓ Front feeding and exit of the linen.
- ✓ **Heating:** electric, gas (atmospheric or radiant burner) and steam.
- ✓ Roll length: 2 m / 2,60 m / 3,30 m.
- ✓ Control: Touch II 7" touch screen microprocessor (5 preset programs).
- ✓ Ironing speed: 1-8 mts/min.
- ✓ Reverse roll standard.

OPTIONS

EFFICIENT IRON

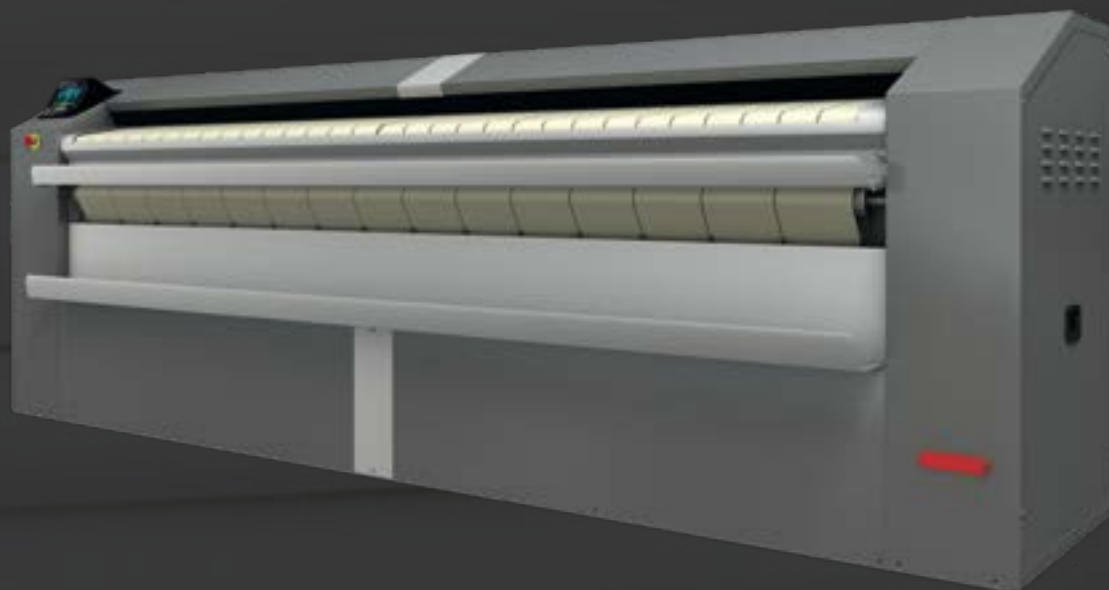
OPTIMAL FEEDING: High production system.

BUILT-IN LENGTHFOLDER

Rear exit (only available with lengthfolder).

Nickel-plated cylinder.

DRYING - IRONING - FOLDING (OPT.)



CM ECO-ENERGY

Ø 650 mm

- ✓ Dries and irons in a single operation.
- ✓ Front feeding and exit of the linen.
- ✓ **Heating:** electric, gas (radiant burner) and steam.
- ✓ Roll length: 2 m / 2,60 m / 3,30 m.
- ✓ Control: Touch II 7" touch screen microprocessor (5 preset programs).
- ✓ Ironing speed: 1-15 mts/min.
- ✓ Reverse roll standard.
- ✓ EFFICIENT IRON
- ✓ OPTIMAL FEEDING: High production system.

OPTIONS

BUILT-IN LENGTHFOLDER

Rear exit (only available with lengthfolder).

Nickel-plated cylinder.

ECOENERGY Ø 500 / 650 mm



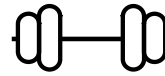
TOUCH II

- ✓ User friendly and totally programmable **7" Touch II**
- ✓ **38 available languages**
- ✓ **5 preset programs**, possibility to create unlimited ones
- ✓ **Reverse roll standard**
- ✓ **DOMUS CONNECT communication kit**
- ✓ **USB Connection.** PC software free of charge for programing, traceability, data analyses...



EFFICIENCY

- ✓ **EFFICIENT IRON:** automatic regulation of ironing speed according to residual moisture, energy economizer (option on Ø 500 mm and standard on Ø 650 mm)
- ✓ **OPTIMAL FEEDING:** automatic adjustment of ironing speed, lowered for feeding and increased for higher production up to 15 m/min. (option on Ø 500 mm and standard on Ø 650 mm)
- ✓ **Good heat conduction** thanks to the material of the roll and its thickness: greater control of the energy expenditure
- ✓ **Automatic shutdown at 80°C:** increases the life time of ironing belts
- ✓ Fumes circulation circuit from the bottom reducing the energy consumption
- ✓ Accurate temperature control thanks to the microprocessor: lower energy consumption
- ✓ **Gas RADIANT BURNER heated model:** hourly output is increased by 25 %: time and energy savings



ROBUSTNESS

- ✓ **Roll driving by inverter:** smooth operation preventing the wear of belts and mechanical elements
- ✓ **Skinplate and stainless steel panels: long lasting**
- ✓ **Nomex quality feeding and ironing belts: resistant to high temperature**
- ✓ **Optional:**
Nickel-platede cylinder: anti corrosive, more durable



VERSATILITY

- ✓ **Gas radiant burner model:** flexibility for a better production or adaptation to high level places
- ✓ **REAR EXIT**
(option available only with lengthfolder)
- ✓ **INTEGRATED LENGTHFOLDER** (as option)
- ✓ Possibility of adding an independent cross folder and stacker



MAINTENANCE

- ✓ **Easy access to all components** on both sides of the machine
- ✓ **Minimal encumbrance:** fits in most of areas, and the optional folder is also built-in
- ✓ **One electrical connection and exhaust required**
- ✓ **Remote communication:** quicker intervention



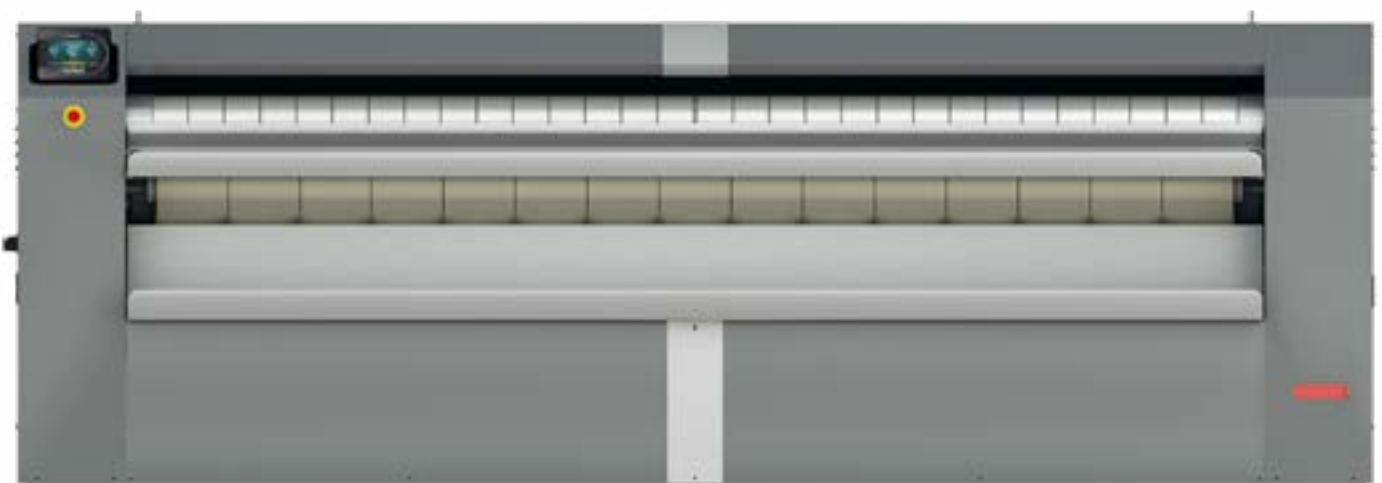
ERGONOMICS

- ✓ **Acoustic comfort:** 65 dba max.
- ✓ Panels in skinplate and stainless steel: easy to clean, better hygiene (RABC compliance)
- ✓ **Appropriate height of feeding:** 1.120 mm
- ✓ **Minimal encumbrance:** save space, fits in most of areas



CONNECTIVITY

- ✓ **Remote technical service**
Machine monitoring, machine error warning, management for traceability and statistics
Remote desk and data recovery for technicians and maintenance, software update, etc.
- ✓ **Management for laundries:**
Our DOMUS IoT solution allows you to manage your laundry business (i.e. create discount programs for customers, get statistics, traceability and laundry monitoring)





Programmable microprocessor

TOUCH II

A microprocessor designed to offer **EFFICIENCY, VERSATILITY** and **CONNECTIVITY**.

User friendly and totally programmable microprocessor with **7"** **Touch II screen**

37 languages

Available and easy to configure, thanks to DOMUS aim to be accessible to everyone.



USB Connection

PC software free of charge for programming, traceability, data analysis...

IoT

Domus Connect

Offers feedback from the machines to the device through the cloud, about traceability and statistics to be analyzed and to ensure **MAXIMUM HYGIENE**.





CONNECTIVITY

The **IoT connection** is easy and free, standard on all ranges with TOUCH II

DOMUSCONNECT



Important advantages for all the actors involved



Owner / end user

Improves usability, efficiency and comfort.
Business control: configurable reports of production, cycles, consumption, revenue, ...
Ensure the ironing process, ensure hygiene and disinfection, ironing quality...

+ information + security + control

Telemetry

Custom graphics for monitoring of your business



Dealer

Technological base for new business (renting, maintenance contracts, self-services...)
Databases of installed machines (geographical distribution, models...)
Added value of DOMUSConnect machines for the customer.

+ opportunity + information + added value



Technical service

Improvement of customer service
Improvement of processes (more efficient and lower costs) avoiding unnecessary trips.
Remote troubleshooting and maintenance programs.
Telemetry and complete information of all the programs carried out.
Access to technical documentation, videos, etc.

+ efficiency + support + information

SAT- trouble shooting





EFFICIENCY

The Eco-energy ranges come with several energy and time saving features

Efficient iron

automatic regulation of ironing speed according to residual moisture, energy economizer (option on 500 mm, standard on Ø 650 mm)

Good heat conduction

thanks to the material of the roll and its thickness: greater control of the energy expenditure

Gas radiant burner heated model

hourly output is increased by 25 %: time and energy savings

Optimal feeding

automatic adjustment of ironing speed, lowered for feeding and increased for higher production up to 15 m/min. (option on Ø 500 mm and standard on Ø 650 mm)



Automatic shutdown at 80 °C

increases the life time of ironing belts

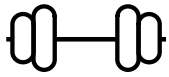
Reducing the energy consumption

by fumes circulation circuit from the bottom

Accurate temperature control

thanks to the microprocessor (except steam models): lower energy consumption





ROBUSTNESS

Designed to last

Roll driving by inverter

Smooth operation preventing the wear of belts and mechanical elements

Paneles en acero inox y skinplate:

larga duración

Nomex quality feeding and ironing belts:

resistant to high temperature

Nickel plate cylinder as option:

anti corrosive, more durable



ERGONOMICS

One of DOMUS concerns is a comfortable operation

Acoustic comfort

65 dba max.

Panels in skinplate

and stainless steel: easy to clean, better hygiene (RABC compliance)

Minimal encumbrance

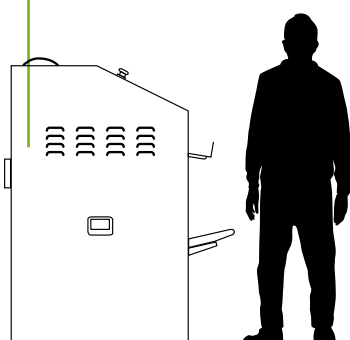
save space, fits in most of areas

Appropriate height of feeding

1.120 mm

User friendly controls

TOUCH II (Ø 500 / 650 mm models) fully programmable



Motor with inverter

Providing a gradual acceleration, soft use



VERSATILITY

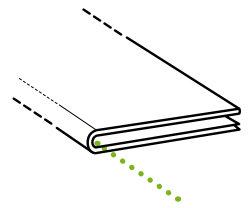
Models with rear exit and lengthfolder to suit all needs

Rear exit

as option with the built-in lengthfolder

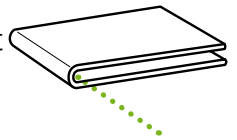
Integrated lengthwise folder

same encumbrance for Ø 500 and 650 mm models, as option



Cross folder

Possibility of adding an independent cross folder and stacker to increase productivity (only with model equipped with folder + rear exit)



Gas radiant burner

flexibility for a better production or adaptation to high level places with less oxygen



MAINTENANCE

DOMUS ironers are designed to offer an easy maintenance and reparability

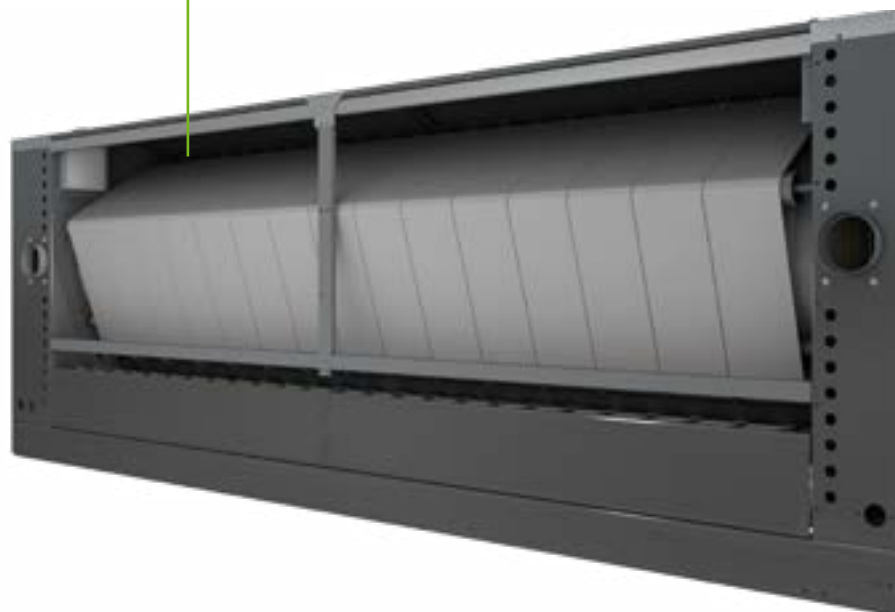
One electrical connection and exhaust required

Minimal encumbrance
fits in most of areas

Remote communication
as option with TOUCH II,
quicker intervention

Technical menu with TOUCH II

Easy access to all components
on both sides of the machine



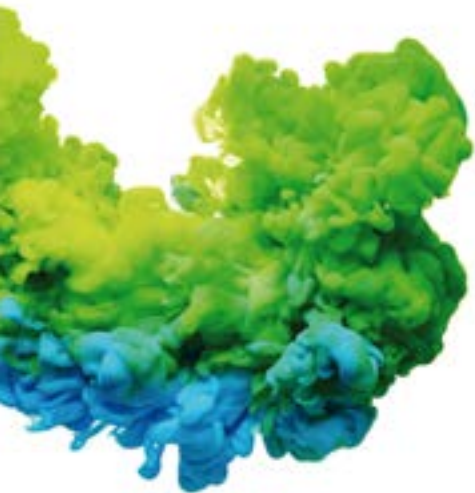
Back side of CM-3365

Wall flatwork ironers technical data

		Ø 200			Ø 325						
UNIT.		CM-1420 M	CM-1620 M	CM-2020 M	CM-1432	CM-1632	CM-2032	CM-2032 ECO-ENERGY M	CM-2632 ECO-ENERGY M	CM-3332 ECO-ENERGY M	
GENERAL DETAILS											
Theoretical production 45% humidity	Electric heating	Kg/h	10-12	13-15	19-21	15-18	25-30	35-40	45-50	55-60	80-85
	Atmo. gas heating	Kg/h	-----	-----	-----	15-18	25-30	35-40	-----	-----	-----
	Radiant gas heating	Kg/h	-----	-----	-----	-----	-----	-----	60-65	75-80	100-105
	Steam heating	Kg/h	-----	-----	-----	-----	-----	-----	-----	-----	-----
Evaporation power	l/h	8-10	10-12	14-18	7-14	14-21	21-28	21-30	23-34	34-45	
Roll Ø	mm	200	200	200	325	325	325	325	325	325	
Working width	mm	1400	1600	2000	1400	1600	2000	2000	2600	3300	
Height floor-feeding belts	mm	990	990	990	990	990	990	990	990	990	
Working speed	mt/min	1.5-6	1.5-6	1.5-6	1.5-10	1.5-10	1.5-10	1.5-12	1.5-12	1.5-12	
Control		M			M			M			
No. Programs	Nº	2 standard modes			2 standard modes			2 standard modes			
Rear exit + length folder	Nº	No	No	No	No	No	No	No	No	No	
Large surface contact with linen	°	270	270	270	270	270	270	270	270	270	
POWER											
Electric	Heating power	kW	10,5	12	18	12	16,2	21	31,5	40,5	54
	Total electric power	kW	10,84	12,34	18,37	12,37	16,57	21,49	32,02	41,02	54,52
Gas	Heating power	kW	-----	-----	-----	14	22,5	30	40	55	69
	Total electric power	kW	-----	-----	-----	0,37	0,37	0,49	0,52	0,52	0,52
Steam	Heating power	kW	-----	-----	-----	-----	-----	-----	-----	-----	-----
	Total electric power	kW	-----	-----	-----	-----	-----	-----	-----	-----	-----
	Consumption	kW	-----	-----	-----	-----	-----	-----	-----	-----	-----
Roll motor power	kW	0,28	0,28	0,28	0,28	0,28	0,28	0,37	0,37	0,37	
Fan motor power	kW	0,09	0,09	0,09	0,12	0,12	0,12 x 2	0,12 x 2	0,12 x 2	0,12 x 2	
Additional elec. power for folder option	kW	-----	-----	-----	-----	-----	-----	-----	-----	-----	
Additional elec. power for folder rear exit option	kW	-----	-----	-----	-----	-----	-----	-----	-----	-----	
CONNECTIONS											
Ø Gas inlet	BSP	----	----	----	1/2"	1/2"	1/2"	1/2"	1/2"	1/2"	
Ø Steam inlet	BSP	----	----	----	----	----	----	----	----	----	
Ø Condensed (steam models)	BSP	----	----	----	----	----	----	----	----	----	
NET DIMENSIONS											
Width	mm	1878	2128	2478	1952	2202	2552	2552	3202	3852	
Depth (without trays)	mm	444* (666)	444* (666)	444* (666)	686	686	686	686	686	686	
Height	mm	1110	1110	1110	1112	1112	1112	1112	1112	1112	
Weight	Kg	180	203	237	330	385	435	435	545	655	
PACKING DIMENSIONS											
Width	mm	2130	2340	2780	2340	2340	2780	2780	3430	3980	
Depth (without trays)	mm	770	770	770	770	770	770	770	770	770	
Height	mm	1400	1400	1400	1400	1400	1400	1400	1400	1400	
Weight	Kg	220	240	275	365	405	458	458	585	700	
Volume	m³	2,30	2,52	3,00	2,52	2,52	3,00	3,00	3,70	4,29	
OTHERS											
Fume outlet	Nº	1	1	1	1	1	2	2	2	2	
Ø Fume outlet	mm	83	83	83	98	98	98	98	98	98	
Air flow	m³/h	300	300	300	500	500	1000	1000	1000	1000	
Noise Level	dB	55	55	55	60	60	63	63	63	63	

*DOMUS reserves the right to modify the technical data without notice.

			Ø 500			Ø 650				
			CM-2050 ECO-ENERGY	CM-2650 ECO-ENERGY	CM-3350 ECO-ENERGY	CM-2065 ECO-ENERGY	CM-2665 ECO-ENERGY	CM-3365 ECO-ENERGY		
UNIT.										
GENERAL DETAILS										
Theoretical production 45% humidity	Electric heating	Kg/h	50-70	60-80	80-120	85-90	110-115	150-160		
	Atmo. gas heating	Kg/h	50-70	72-96	96-144	-----	-----	-----		
	Radiant gas heating	Kg/h	85-90	90-110	130-145	95 -115	125-130	160-180		
	Steam heating	Kg/h	50-70	60-80	80-120	85-90	110-115	150-160		
Evaporation power	l/h	35 - 49	42 - 56	56 - 84	45-63	55 - 73	73 - 110			
Roll Ø	mm	500	500	500	650	650	650			
Working width	mm	2000	2600	3300	2000	2600	3300			
Height floor-feeding belts	mm	1120	1120	1120	1120	1120	1120			
Working speed	mt/min	1-8	1-8	1-8	1-15	1-15	1-15			
Control	TOUCH II			TOUCH II						
No. Programs	Nº	5 standard modes			5 standard modes					
Rear exit + length folder	Nº	OPT	OPT	OPT	OPT	OPT	OPT			
Large surface contact with linen	°	310	310	310	310	310	310			
POWER										
Electric	Heating power	kW	31,5	40,5	54	42	54	72		
	Total electric power	kW	32,12	41,37	54,87	43,05	55,05	73,05		
Gas	Heating power	kW	40	55	69	52	69	78		
	Total electric power	kW	0,62	0,87	0,87	1,05	1,05	1,05		
Steam	Heating power	kW	50	64	81	60	76	97		
	Total electric power	kW	0,62	0,87	0,87	1,05	1,05	1,05		
	Consumption	kW	50	67	85	60	80	102		
Roll motor power	kW	0,37	0,37	0,37	0,55	0,55	0,55			
Fan motor power	kW	0,25	0,25 x2	0,25 x 2	0,25 x 2	0,25 x2	0,25 x 2			
Additional elec. power for folder option	kW	0,56	0,56	0,56	0,56	0,56	0,56			
Additional elec. power for folder rear exit option	kW	0,74	0,74	0,74	0,74	0,74	0,74			
CONNECTIONS										
Ø Gas inlet	BSP	1"	1"	1"	1/2"	1/2"	1/2"			
Ø Steam inlet	BSP	3/4"	3/4"	3/4"	3/4"	3/4"	3/4"			
Ø Condensed (steam models)	BSP	1/2"	1/2"	1/2"	1/2"	1/2"	1/2"			
NET DIMENSIONS										
Width	mm	2845	3445	4145	2845	3445	4145			
Depth (without trays)	mm	1070	1070	1070	1070	1070	1070			
Height	mm	1420	1420	1420	1420	1420	1420			
Weight	Kg	930	1180	1430	1189	1517	1765			
PACKING DIMENSIONS										
Width	mm	3145	3745	4445	3145	3745	4445			
Depth (without trays)	mm	1153	1153	1153	1153	1153	1153			
Height	mm	1672	1672	1672	1672	1672	1672			
Weight	Kg	972	1470	1480	1231	1567	1815			
Volume	m³	6,06	7,22	8,57	6,06	7,22	8,57			
OTHERS										
Fume outlet	Nº	1	2	2	2	2	2			
Ø Fume outlet	mm	153	153	153	153	153	153			
Air flow	m³/h	600	1200	1200	1200	1200	1200			
Noise Level	dB	65	65	65	65	65	65			



DOMUS

WINNING THE FUTURE THROUGH INNOVATION

C. Energia, 12 - Pol. Ind. La Quintana
08504 Sant Julià de Vilatorca
BARCELONA (SPAIN)

SALES DEPARTMENT

T. +34 93 888 71 53
M. +34 649 482 730
domus@domuslaundry.com
export@domuslaundry.com

AFTER SALES DEPARTMENT

T. +34 93 888 76 73
sat@domuslaundry.com

PARTS DEPARTMENT

T. +34 93 888 76 83
parts@domuslaundry.com



ONNERA GROUP



WWW.DOMUSLAUNDRY.COM



AENOR	AENOR
GESTIÓN DE LA CALIDAD	GESTIÓN AMBIENTAL
ISO 9001	ISO 14001