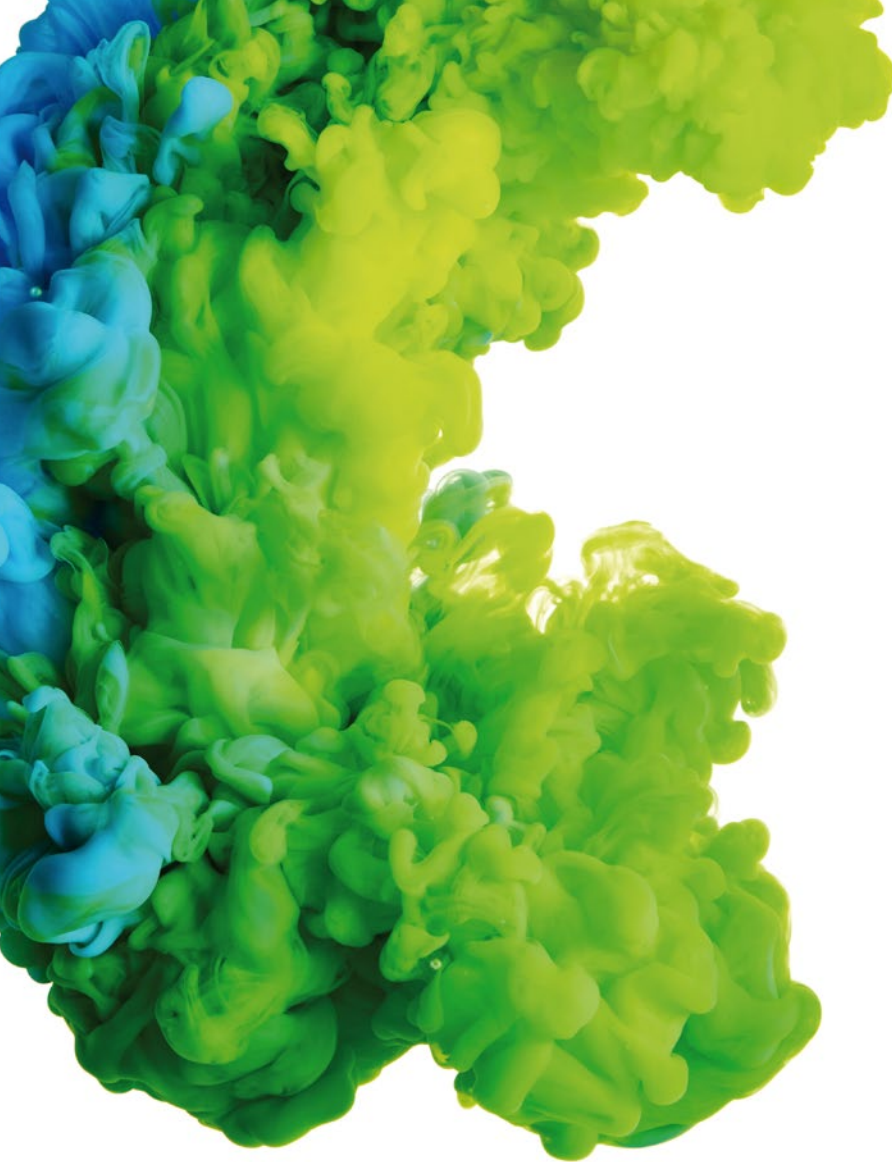




# TUMBLE DRYERS

2025



# Tumble dryers

The wide range of DOMUS tumble dryers is suitable for all types of sectors and businesses, thanks to its versatile models and numerous features.

The same dryer can be installed in an industrial laundry (hotels or residences) or be prepared for self-service laundries.

Their efficient and technologically advanced features make them ideal for highly profitable laundries that take energy saving into account.

## Single pocket



### DOMUS ECO-ENERGY | The most efficient

CONTROL TYPE	HEATING	CAPACITY								
		11-12 kg	14-15 kg	17-18 kg	22-24 kg	28-31 kg	33-37 kg	45-50 kg	60-67 kg	75-83 kg
MICROPR. TOUCH II	Electric, gas, steam	DTT-11 ECO-ENERGY	DTT-14 ECO-ENERGY	DTT-18 ECO-ENERGY	DTT-22 ECO-ENERGY	DTT-28 ECO-ENERGY	DTT-35 ECO-ENERGY	DTT-45 ECO-ENERGY	DTT-60 ECO-ENERGY	DTT-80 ECO-ENERGY



### DOMUS DYNAMIC

CONTROL TYPE	HEATING	CAPACITY								
		11-12 kg	14-15 kg	17-18 kg	22-24 kg	28-31 kg	33-37 kg	45-50 kg	60-67 kg	75-83 kg
MICROPR. TOUCH II	Electric, gas, steam	DTT-11	DTT-14	DTT-18	DTT-22	DTT-28	DTT-35	DTT-45	DTT-60	DTT-80



### DOMUS COMFORT

CONTROL TYPE	HEATING	CAPACITY								
		11-12 kg	14-15 kg	17-18 kg	22-24 kg	28-31 kg	33-37 kg	45-50 kg	60-67 kg	75-83 kg
ELECTRONIC CTRL M	Electric, gas, steam	DTM-11	DTM-14	DTM-18	DTM-22	DTM-28	DTM-35	DTM-45	DTM-60	DTM-80



### DOMUS ESSENTIAL

CONTROL TYPE	HEATING	CAPACITY							
		11-12 kg	14-15 kg	17-18 kg	22-24 kg	28-31 kg	33-37 kg	45-50 kg	60-67 kg
ELECTRONIC CTRL M	Electric, gas	DLM-11	DLM-14	DLM-18	DLM-22	DLM-28	DLM-35	DLM-45	DLM-60



## Double pocket: STACK



### DOMUS DYNAMIC XP

CONTROL TYPE	HEATING	CAPACITY			
		11-12 kg	14-15 kg	17-18 kg	22-24 kg
TOUCH II microprocessor Programmable control	Electric, gas	DTT2-11 XP	DTT2-14 XP	DTT2-18 XP	DTT2-22 XP G



### DOMUS COMFORT XP

CONTROL TYPE	HEATING	CAPACITY			
		11-12 kg	14-15 kg	17-18 kg	22-24 kg
Electronic control M	Electric, gas	DTM2-11 XP	DTM2-14 XP	DTM2-18 XP	DTM2-22 XP G



### DOMUS ESSENTIAL XP

CONTROL TYPE	HEATING	CAPACITY			
		11-12 kg	14-15 kg	17-18 kg	22-24 kg
Electronic control M	Electric, gas	DLM2-11 XP	DLM2-14 XP	DLM2-18 XP	DLM2-22 XP G



NOTE: All models can be easily converted to coin mode, with a coin kit, token kit or for central pay, except 45kg to 80kg models and ECO-ENERGY range.



# Single pocket



## DTT ECOENERGY

- ✓ **TOUCH II:** easy-to-use microprocessor, fully programmable with a 7" touchscreen.
  - ✓ **DOMUSCONNECT:** standard and free IoT connectivity.
  - ✓ **AIR RE-CYCLE:** air recovery system for great energy efficiency.
  - ✓ **EFFICIENT DRY:** intelligent humidity sensor.
  - ✓ Thermal insulation: complete circuit of the airflow.
  - ✓ **FULL FLOW:** optimised mixed airflow system.
  - ✓ **SFEX:** integrated Fire Extinguishing System.
  - ✓ Grey skinplate body, stainless steel look.
  - ✓ Big loading door (opening of 180°).
  - ✓ Reverse action: standard in all models.
  - ✓ Stainless steel drum as standard.
  - ✓ **SOFT DRY:** drum with stamped holes.
  - ✓ **FULL SCREEN FILTER:** filter drawer with wide surface and improved airflow.
  - ✓ **COOL DOWN:** anti-wrinkle at the end of cycle.
- OPTIONS:**
- + **Perfume dosing system.**
  - + **Front tilt (45-80 models).**
  - + **Sliding door.**



## DTT DYNAMIC

- ✓ **TOUCH II:** easy-to-use microprocessor, fully programmable with a 7" touchscreen.
  - ✓ **DOMUSCONNECT:** standard and free IoT connectivity.
  - ✓ Grey skinplate body, stainless steel look.
  - ✓ Big loading door (opening of 180°).
  - ✓ Reverse action: standard in all models.
  - ✓ Stainless steel drum as standard.
  - ✓ **DOUBLE FLOW:** axial-radial airflow.
  - ✓ **SOFT DRY:** drum with stamped holes.
  - ✓ **FULL SCREEN FILTER:** filter drawer with wide surface and improved airflow.
  - ✓ **COOL DOWN:** anti-wrinkle at the end of cycle.
- OPTIONS:**
- + **Sliding door,**
  - + **EFFICIENT DRY:** the intelligent humidity sensor.
  - + **SFEX:** Integrated Fire Extinguishing System.
  - + Double door glass.
  - + Perfume dosing system.
  - + Front tilt on big capacity.



## DTM COMFORT

- ✓ **Programmer M:** time and temperature selection, easy to use and versatile.
  - ✓ Grey skinplate body, stainless steel look.
  - ✓ Big loading door (opening of 180°).
  - ✓ Reverse action: standard in all models.
  - ✓ Stainless steel drum as standard.
  - ✓ **DOUBLE FLOW:** axial-radial airflow.
  - ✓ **SOFT DRY:** drum with stamped holes.
  - ✓ **FULL SCREEN FILTER:** filter drawer with wide surface and improved airflow.
  - ✓ **COOL DOWN:** anti-wrinkle at the end of cycle.
- OPTION:**
- + **Sliding door.**
  - + Display for M programmer.



## DLM ESSENTIAL

- ✓ **Programmer M:** time and temperature selection, easy to use and versatile.
- ✓ White painted panels.
- ✓ Big loading door (opening of 180°).
- ✓ Reverse action: standard in all models.
- ✓ **DOUBLE FLOW:** axial-radial airflow.
- ✓ **SOFT DRY:** drum with stamped holes.
- ✓ **COOL DOWN:** anti-wrinkle at the end of cycle.





New

## DTT2 XP DYNAMIC



✓ **TOUCH II:** easy-to-use microprocessor, fully programmable with a 7" touchscreen.

✓ **DOMUSCONNECT:** standard and free IoT connectivity.

✓ Grey skinplate body, stainless steel look.

✓ Big loading door (opening of 180°).

✓ Reverse action: standard in all models.

✓ **DOUBLE FLOW:** axial-radial airflow.

✓ **SOFT DRY:** drum with stamped holes.

✓ **FULL SCREEN FILTER:** filter drawer with wide surface and improved airflow.

✓ **COOL DOWN:** anti-wrinkle at the end of cycle.

### OPTIONS:

+ **EFFICIENT DRY:** the intelligent humidity sensor.

+ **SFEX:** Integrated Fire Extinguishing System.

+ Double door glass.

+ Perfume dosing system.



New

## DTM2 XP COMFORT



✓ **Programmer M:** time and temperature selection, easy to use and versatile

✓ Grey skinplate body, stainless steel look.

✓ Big loading door (opening of 180°).

✓ Reverse action: standard in all models.

✓ **FULL SCREEN FILTER:** filter drawer with wide surface and improved airflow.

✓ **DOUBLE FLOW:** axial-radial airflow.

✓ **SOFT DRY:** drum with stamped holes.

✓ **COOL DOWN:** anti-wrinkle at the end of cycle.

### OPTIONS:

+ **Display for M programmer.**



New

## DLM2 XP ESSENTIAL



✓ **Programmer M:** time and temperature selection, easy to use and versatile.

✓ White painted panels. Galvanized drum.

✓ Big loading door (opening of 180°).

✓ Reverse action: standard in all models.

✓ **FULL SCREEN FILTER:** filter drawer with wide surface and improved airflow.

✓ **DOUBLE FLOW:** axial-radial airflow.

✓ **SOFT DRY:** drum with stamped holes.

✓ **COOL DOWN:** anti-wrinkle at the end of cycle.



## TOUCH II

- ✓ **TOUCH II:** easy-to-use microprocessor, fully programmable with a 7" touchscreen.
- ✓ **DOMUSCONNECT:** standard and free IoT connectivity (models with TOUCH II).
- ✓ Multilingual interface: choose your preferred language from a wide and constantly expanding selection.
- ✓ **New telemetry:** detailed data with dynamic and customisable graphs.
- ✓ USB port: configure, update, and analyse machines without internet connection.
- ✓ On-screen videos: add your logo, video advertisements or instructions for use. Especially useful for self-service.

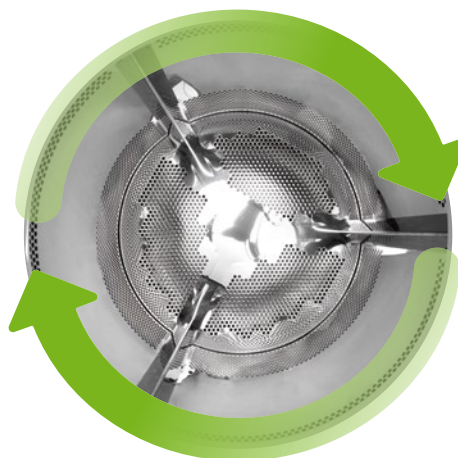
### OPTIONS:

- + Dosing/Steamizing system (softeners/perfumes).



## OUTSTANDING FEATURES

- ✓ **Reversing drum action** as standard.
- ✓ **Stainless steel drum** as standard.
- ✓ **Frequency inverter** as standard.
- ✓ **SOFT DRY** as standard.



## VERSATILITY

- ✓ **Make to order: customization.**  
New possibility to customize the machines from factory with the available options.
- ✓ **Wet Cleaning:** possibility to create different phases per program with its customized parameters.
- ✓ **EFFICIENT DRY**
- ✓ **OPL < > Self-service laundry**  
Standard OPL model easily transformable to coin laundry.



## MAINTENANCE

- ✓ **Hinged panel:** easy and ergonomic access to control panel parts.
- ✓ **Easy access to parts for reparability:** dryers are designed to offer an easier maintenance and repair.
- ✓ **Technical menu:** machine monitoring, machine error warning, management for telemetry and statistics. Remote desk and data recovery for technicians and maintenance, software update, etc.





## ERGONOMICS

- ✓ **Drawer as fluff filter**, made of stainless steel.
- ✓ **Large door diameters**: very useful for loading and unloading.
- ✓ Ideal door height for ergonomic opening.
- ✓ Adjustable door opening direction (models 11 to 35 kg)
- ✓ Reversible door: can be ordered with the machine order.

### OPTIONS:

- + Sliding door in 45 to 80 kg models. Automatic or manual operation.



## EFFICIENCY

- ✓ **EFFICIENT DRY**: intelligent humidity control system with temperature control at the drum entrance.
- ✓ **AIR RE-CYCLE**: efficient air recirculation system. Shorter drying times, lower energy consumption.
- ✓ **FULL FLOW**: optimised mixed airflow system.
- ✓ **DOUBLE FLOW**: Axial-radial airflow.
- ✓ Big fluff filter.
- ✓ Thermal insulation.

### OPTIONS:



- + LEMS by Onnera pulse concentrator.



## CONNECTIVITY

- ✓ **DOMUSCONNECT**: standard and free IoT connectivity. Machine monitoring, machine error warning, management for telemetry and statistics, remote desk and data recovery for technicians and maintenance, software update, etc.
- ✓ **Management for laundries**: OPL and COIN. Our DOMUS IoT solution allows you to manage your laundry business.
- ✓ **Remote payment**: App for payments, cashless payment by scanning a QR code, promotions and machine booking.



# TOUCH II

The TOUCH II includes many features based on achieving more efficiency, versatility and connectivity.

## User friendly and totally programmable microprocessor

- ✓ 7" touch screen.
- ✓ Configuration of washing and spinning speed.
- ✓ Complete regulation of water levels.
- ✓ Regulable washing temperature from 20 °C to 90 °C.
- ✓ Standard Wet Cleaning system.

## Videos on display

Ads, instructions  
(useful for coin laundries).





## Dosing / vaporizing system

Offer your customers a premium experience by precisely managing the fragrance dosing in your dryers.



## Multilingual interface

Choose your preferred language to display on the TOUCH II screen from a wide and constantly expanding selection.



## DOMUSCONNECT:

### Maximum efficiency and real-time control

Discover the power of IoT connectivity, integrated for free in all machines with TOUCH II via Ethernet, for advanced and efficient management.

- ✓ Monitor telemetry and statistics in real time.
- ✓ Optimise the performance of your equipment.
- ✓ Ensuring MAXIMUM HYGIENE.
- ✓ Receive remote technical support.
- ✓ Update the software and much more.



## USB port

If you don't have an internet connection in your laundry, the USB port allows you to configure, update, and analyse the machines via this connection by downloading and uploading data.



# EFFICIENCY

## ECOENERGY

A RANGE WITH ALL  
EFFICIENT FEATURES  
AS STANDARD

The new ECOVOLUTION technology, especially in HEAT PUMP and ECOENERGY tumble dryers, offer a wide variety of standard efficient features to provide important energy savings.



Temperature



Air flow



Cycle time



Machine design

100% Efficiency in Domus dryers

### Air Re-Cycle

Efficient air recovery system.  
Short drying times, less energy  
consumption.

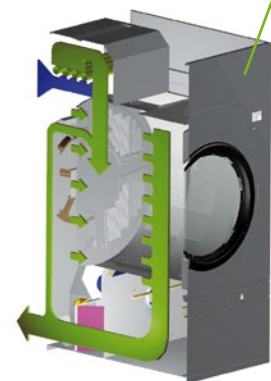
Thermal insulation  
Insulated panels to avoid  
loss of heat.

### Efficient Dry

Intelligent humidity control  
(standard in  
ECO-ENERGY and as option in  
DYNAMIC).

### Drum inlet temperature control

A more accurate temperature  
control in the drum.



### Full Flow

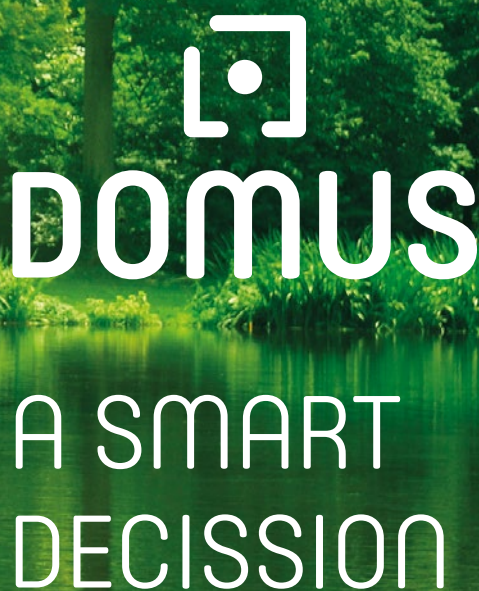
Optimized system of  
mixed airflow in  
ECO-ENERGY range.

### Double Flow

Axial radial airflow in  
DYNAMIC, COMFORT  
and ESSENTIAL ranges.

## In a laundry, the machines are the visible part of an iceberg.

At DOMUS we pay attention to the iceberg part that cannot be seen, to optimize the expenses during the whole Life Cycle Cost.



# DOMUS

## A SMART DECISSION

### Start saving with Domus in:



#### Water

We design our systems to ensure efficient water usage, preventing waste.



#### Energy

We optimise our machines to guarantee greater energy savings and maximise laundry efficiency.



#### Chemicals

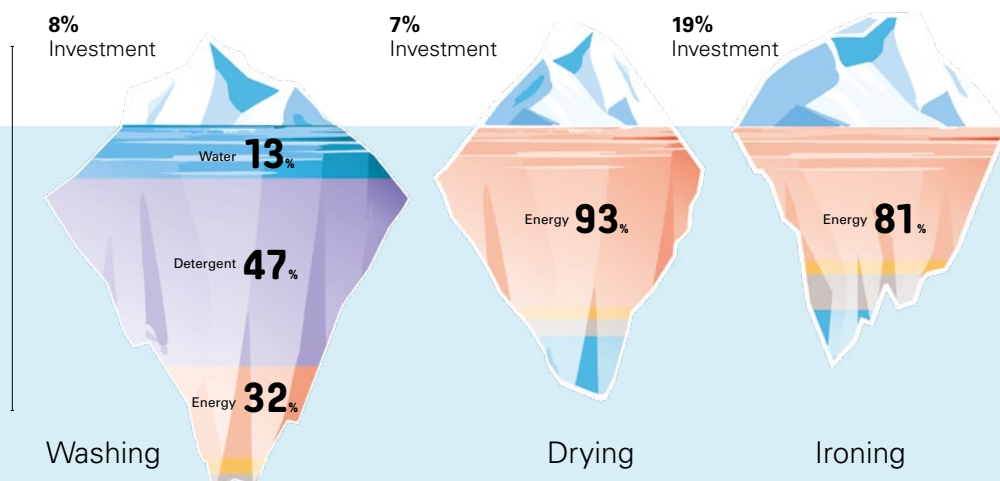
We design our washers and barriers with features that ensure the precise use of chemicals.



#### Time

We adjust process times, key in a laundry, to increase efficiency and business profitability.

Example of a standard laundry with 50% flat linen and 50% towelling, during the first 10 years of life.





# CONNECTIVITY

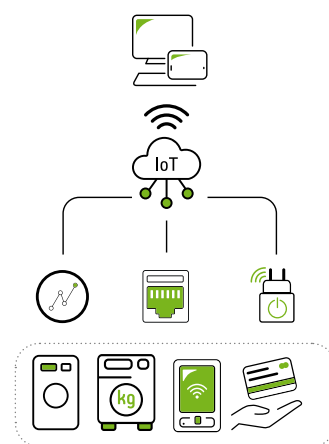
All DOMUS dryers with TOUCH II come with DOMUSCONNECT as standard and free of charge, enabling full remote management to improve efficiency, control, and business operations.

DOMUSCONNECT (IoT): the solution for your laundry

The Internet of Things (IoT) connects everyday objects to the internet, allowing real-time remote control and process optimisation.

DOMUSCONNECT is a free laundry management platform that takes IoT to its full potential, transforming the operations of your OPL or self-service laundry.

With this platform, you can increase efficiency, reduce costs, and enhance your customers' experience from anywhere.



Main features of DOMUSCONNECT:



**Accessible from any device**

Manage your laundry from a computer, tablet, or smartphone.



**Free updates**

Receive regular new features to keep your business at the forefront.



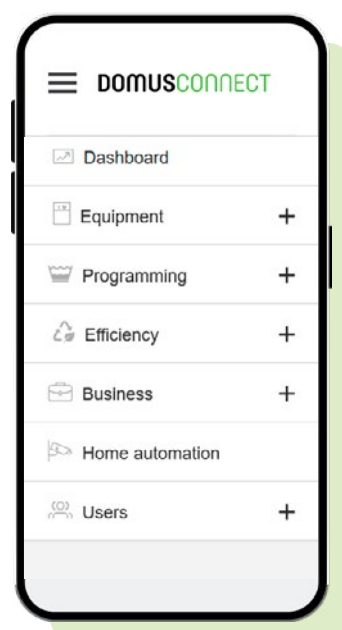
**Highly secure**

Advanced security ensures the integrity and confidentiality of your data at all times.



**Available in multiple languages**

Expanding continuously to suit your needs.





What are the benefits for each profile?



### **As an owner** you can:

- Manage your business remotely, avoiding unnecessary travel.
- Use an intuitive interface to streamline operations.
- Access production reports, cycles, consumption, and revenue data.
- Ensure process control for washing and drying.
- Guarantee hygiene, disinfection, and quality in every cycle.



### **For your self-service customer**, they can:

Nuevo

Make quick and secure payments via card (new), tokens, or the App.

Nuevo

Enjoy personalised promotions.

Check machine status in real time, avoiding waiting times.

Operate with an intuitive, user-friendly interface..



### **For service technicians**:

Nuevo

- Provide remote assistance to minimise on-site visits.

Nuevo

- Access precise data via the new telemetry system to improve operations.

Nuevo

- Perform remote software updates to keep machines up-to-date..



### **For chemical suppliers**:

Nuevo

- Manage and create washing and drying programmes online.

Nuevo

- Control chemical dosing via RS-485.

- Monitor executed programmes in real time.



### **As a distributor**, you can:

Leverage the platform to support new business ventures, manage leasing, maintenance contracts, and self-service setups. Access detailed databases of installed machines, geographical distribution, and models for efficient management.



# ECOSMART LAUNDRY

by DOMUS

## THE LAUNDRY OF THE FUTURE HAS ALREADY ARRIVED.

Domus latest generation, high-performance and connected equipment allows you to manage and monitor resource consumption in real time thanks to cutting-edge technology. Ideal for any type of business and sector.



### Add dryers with **AIR RECYCLE** and **EFFICIENT DRY**

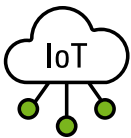
By adding Domus dryers to your **ECOSMART LAUNDRY**, you improve the efficiency and sustainability of your business. With innovations such as AIR RE-CYCLE and EFFICIENT DRY, each cycle is optimized to save energy and reduce drying times.





## LEMS by Onnera - Total control of consumption

With the new LEMS pulse concentrator and DOMUSCONNECT (IoT), you can retrieve all the data and analyze the efficiency of your washing machines and the ECOTANK XL such as water, energy and other resources of your industrial laundry.



## DOMUSCONNECT

The data collected by LEMS, added to other metrics and values of your laundry, are integrated into the DOMUSCONNECT platform, allowing you to monitor and control your business live and obtain **detailed management, hygiene and efficiency reports**.





# VERSATILITY

To adapt to the needs of the different businesses.

## OPL <> Self-Service

Easy transformation from OPL to self-service, with various payment options available (see page 17).

## EFFICIENT DRY

Intelligent humidity control, which adapts the drum rotation speed to the humidity level at each drying phase (standard in ECO-ENERGY, optional in DYNAMIC).

## Wet Cleaning<sup>®</sup>

### The best dryer for Wet Cleaning.

- ✓ Fully programmable control: possibility of programming in phases.
- ✓ Precise control of inlet and outlet temperatures.
- ✓ Exact programming of humidity.
- ✓ Adjustable drum speed.

## Customization

Possibility to customise the machine from factory with the available options.






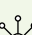



# Payment options

Domus offers you maximum flexibility with **three payment systems that can be combined**, allowing you to choose one or more for your laundry or Clean&Move module. DOMUS dryers between 11 and 45 kg are specifically designed for use in self-service laundries

## 1 DOMUS LAUNDRY KIOSK

Optimise your laundry with contactless payments and remote control. Provide convenience and security for your customers while managing pricing and promotions from anywhere with DOMUSCONNECT.

-  Available in 12' and 32' screens.
-  Allows payments by card or smart device (NFC).
-  Minimal fees.
-  High compatibility and easy to install.
-  Very intuitive and quick to use.



## 2 Payment via App DOMUS LAUNDRY

Allows remote machine reservation and payment, helping to build customer loyalty with promotional offers. See page 12 for more details.



## 3 Payment with COIN / TOKEN

Washers and dryers can include coin/token payment systems in various currencies.



Click or tap the button to find out more details about payment options.





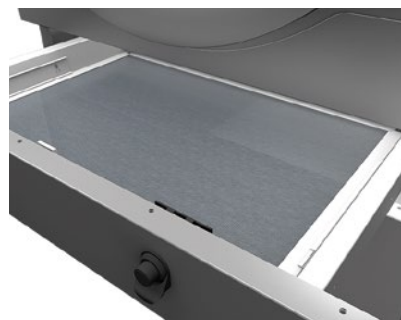
# ERGONOMICS

## Opening sense of the door adjustable on site

Opening sense can be easily changed in models 11 to 36 kg. It can also be ordered from factory.

## Biggest door diameters

Helpful for loading and unloading.



## Big fluff filter

Drawer with stainless steel grid, easy to open and clean.

We take care of you as well as your clothes and your business.



## Front tilt system

In DTT-45 to 80.

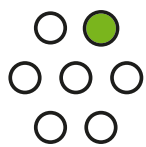


## Sliding door for an easy unloading and loading operation

Automatic and manual options.







# OUTSTANDING FEATURES

## **Reversing drum action**

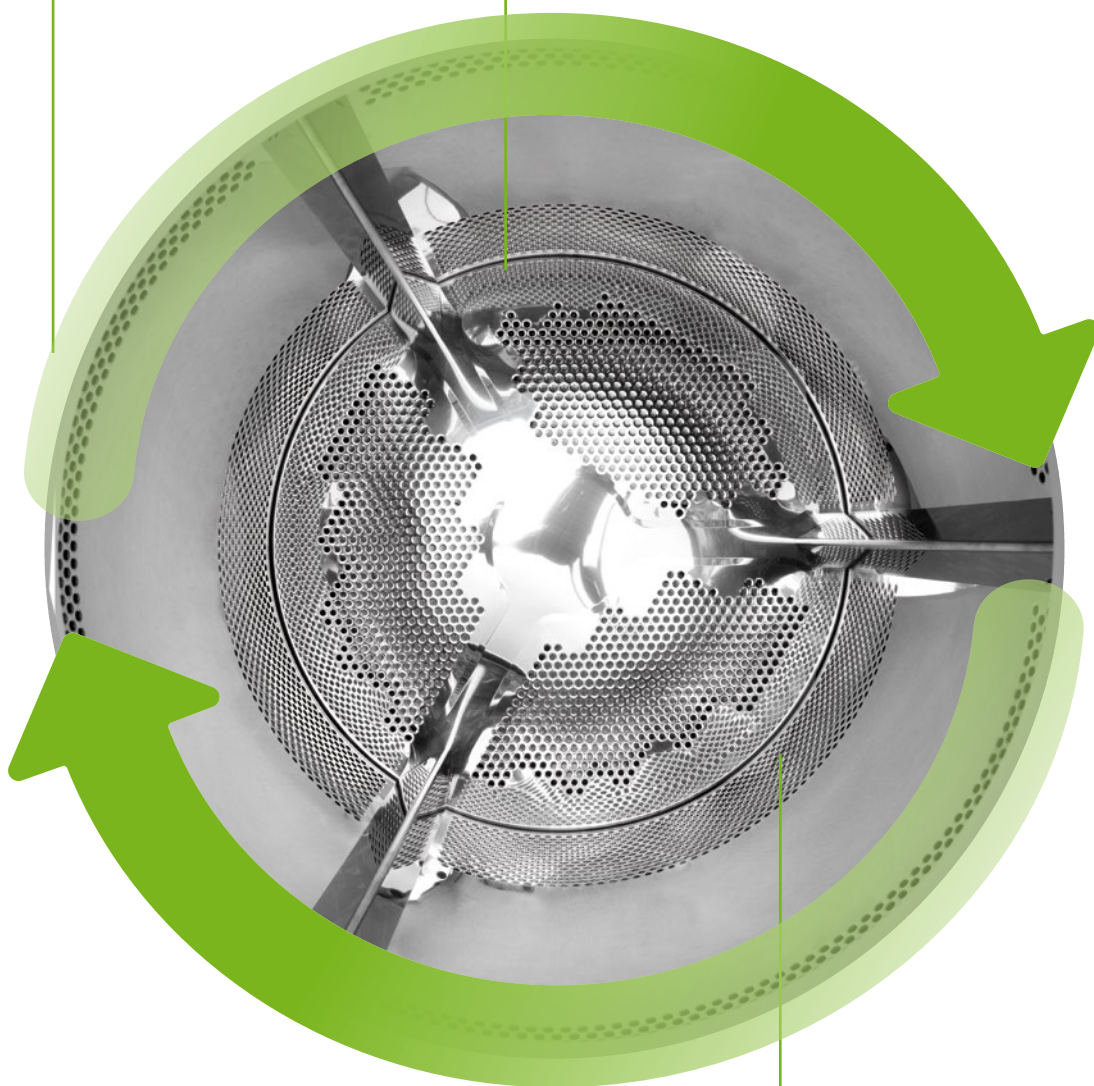
As standard

## **Stainless steel drum**

As standard except  
ESSENTIAL range

## **Frequency inverter**

As standard



## **SOFT DRY**

Stamped drum  
holes, to lengthen  
the linen lifetime





# MAINTENANCE

One of DOMUS concerns is to make life easier for our clients. That includes offering quality equipment and parts of reputed brands, which demand little maintenance.



## Easy access to parts

Dryers are designed to offer an easy maintenance and reparability.

## Hinged panel

Easy and ergonomic access to control panel parts.



## Technical menu

Machine monitoring, machine error warning, management for telemetry and statistics. Remote desk and data recovery for technicians and maintenance, software update, etc.

## Equivalent parts

Most key parts are the same for all models (contactors, electronic devices, gear...).



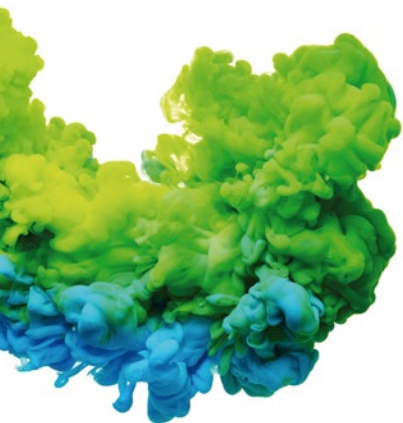
## Tumble dryers technical data

SINGLE POCKET		DTT/DTM/ DLM-11	DTT/DTM/ DLM-14	DTT/DTM/ DLM-18	DTT/DTM/ DLM-22	DTT/DTM/ DLM-28	DTT/DTM/ DLM-35	DTT/DTM-45	DTT/DTM-60	DTT/DTM-80
CAPACITY & DRUM										
Capacity 1/18	Kg	11,7	15	18,3	24,4	30,6	36,7	50	66,7	83,3
Capacity 1/20	Kg	10,5	13,5	16,5	22,0	27,5	33	45	60	75
Ø Drum	mm	750	750	750	835	947	947	1.225	1.225	1.225
Drum length	mm	475	610	746	800	780	936	760	1.020	1.252
Drum volume	l	210	270	330	440	550	660	900	1.200	1.500
Ø Door hole	mm	574	574	574	574	802	802	802	802	802
Door center height	mm	976	976	976	1.030	1.040	1.040	1.275	1.275	1.275
Height from floor to bottom of door	mm	618	618	618	672	578	578	813	813	813
ELECTRIC HEATING										
Evaporation capacity ECO-ENERGY	L/h	11	14,5	14,9	20	26,8	31,5	45	64	68,2
Evaporation capacity DYNAMIC-COMFORT-ESSENTIAL	L/h	9,3	13,5	14,10	17	26,1	31,5	40,2	60,2	64
Hourly output ECO-ENERGY	Kg/h	21,7	29	30	40	51,6	63,9	90	128,6	136,4
Hourly output DYNAMIC-COMFORT-ESSENTIAL	Kg/h	20,3	26,9	28,3	34	48,4	60	80,4	120	128,6
Installed heating power	kW	12	18	18	24	30	36	54	72	72
Installed electrical power ECO-ENERGY	kW	12,97	18,97	18,97	25,17	31,35	37,35	57	75,35	75,75
Installed electrical power DYNAMIC-COMFORT-ESSENTIAL	kW	12,67	18,67	18,67	24,97	31,15	37,15	55,9	74,25	74,65
Drum motor power	kW	0,37	0,37	0,37	0,37	0,55	0,55	0,75	1,10	1,50
GAS HEATING										
Evaporation capacity ECO-ENERGY	L/h	15	15,6	16,3	22,3	31,8	34,7	48,2	72	93,8
Evaporation capacity DYNAMIC-COMFORT-ESSENTIAL	L/h	14,5	15,4	16,3	20	30,9	32,1	42,5	65,8	86,5
Hourly output ECO-ENERGY	Kg/h	31,3	32,5	33,6	44,6	61,1	73,3	96,4	144	187,5
Hourly output DYNAMIC-COMFORT-ESSENTIAL	Kg/h	28,6	30,3	31,9	40	59,3	63,9	84,4	128,6	173,1
Installed gas heating power	kcal/h	17638	17638	17638	26655	35276	35276	51591	77386	103181
Installed gas heating power	kW	20,51	20,51	20,51	31	41	41	60	90	120
Installed electrical power ECO-ENERGY	kW	0,97	0,97	0,97	1,17	1,35	1,35	3	3,35	3,75
Installed electrical power DYNAMIC-COMFORT-ESSENTIAL	kW	0,67	0,67	0,67	0,97	1,15	1,15	1,9	2,25	2,65
STEAM HEATING										
Installed steam heating power	kW	30	30	30	49,2	50,1	50,1	91	128	128
Installed electrical power ECO-ENERGY	kW	0,97	0,97	0,97	1,17	1,35	1,35	3	3,35	3,75
Installed electrical power DYNAMIC-COMFORT-ESSENTIAL	kW	0,67	0,67	0,67	0,97	1,15	1,15	1,9	2,25	2,65
VENTILATION										
Fan motor power ECO-ENERGY	kW	0,55	0,55	0,55	0,75	0,75	0,75	2,2	2,2	2,2
Fan motor power DYNAMIC-COMFORT-ESSENTIAL	kW	0,25	0,25	0,25	0,55	0,55	0,55	1,1	1,1	1,1
Ø Fume exhaust	mm	200	200	200	200	200	200	300	300	300
HEAT EMISSION										
Maximum total heat emission ECO-ENERGY	kW	0,96	1,44	1,44	1,92	2,4	2,88	3,78	5,04	5,04
Maximum total heat emission DYNAMIC-COMFORT-ESSENTIAL	kW	1,2	1,8	1,8	2,4	3	3,6	4,86	6,48	6,48
Max. front heat emission ECO-ENERGY	kW	0,60	0,90	0,90	1,20	1,50	1,80	1,08	1,44	1,44
Max. front heat emission DYNAMIC-COMFORT-ESSENTIAL	kW	0,84	1,26	1,26	1,68	2,1	2,52	2,16	2,88	2,88
NET DIMENSIONS / DIMENSIONS WITH PACKING										
Net / gross width	mm	785 / 865	785 / 865	785 / 865	890 / 970	985 / 1.065	985 / 1.065	1.270 / 1.330	1.270 / 1.330	1.270 / 1.330
Net / gross depth	mm	855 / 940	989 / 1.074	1.125 / 1.210	1.255 / 1.345	1.054 / 1.154	1.210 / 1.310	1.106 / 1.185	1.366 / 1.455	1.598 / 1.705
Net / gross height (*without heating)	mm	1.694 / 1.840	1.694 / 1.840	1.694 / 1.840	1.812 / 1.940	1.975 / 2.080	1.975 / 2.080	2.380 /*2.200	2.380 /*2.200	2.380 /*2.200
Net / gross weight	Kg	172 / 180	180 / 190	187 / 200	210 / 230	230 / 260	260 / 285	395 / 430	529 / 575	657 / 715
OTHERS										
Sound level	dB	64	64	64	65	65	65	67	67	67

## Tumble dryers technical data

	UNIT.	DTT2-11 XP/DTM2-11 XP/ DLM2-11 XP	DTT2-14 XP/DTM2-14 XP/ DLM2-14 XP	DTT2 -18 XP/DTM2 -18 XP/ DLM2-18 XP	DTT2-22 XP/DTM2-22 XP/ DLM2-22 XP		
CAPACITY & DRUM							
Capacity 1/18 (each drum)	Kg	11,7 x2	15 x2	18,3 x2	24,3 x2		
Capacity 1/20 (each drum)	Kg	10,5 x2	13,5 x2	16,5 x2	21,9 x2		
Ø Drum	mm	750	750	750	835		
Drum length	mm	475	610	746	800		
Drum volume	l	210	270	330	440		
Ø Door hole	mm	574	574	574	575		
Door center height	mm	547 / 1.522	547 / 1.522	547 / 1522	547 / 1.618		
Height from floor to bottom of door	mm	189 / 1.164	189 / 1.164	189 / 1.164	214 / 1.258		
ELECTRIC HEATING							
Evaporation capacity	L/h	27 (13,5 x2)	29 (14,5 x2)	31 (15,5 x2)	-		
Hourly output	Kg/h	54 (27 x2)	58 (29 x2)	62 (31 x2)	-		
Installed heating power	kW	12 x2	18 x2	18 x2	-		
Installed electrical power	kW	31,34	37,34	37,34	-		
Drum motor power	kW	0,37 x2	0,37 x2	0,37 x2	0,37 x2		
GAS HEATING							
Evaporation capacity	L/h	30,8 (15,4 x2)	31,4 (15,7 x2)	32 (16 x2)	44 (22 x2)		
Hourly output	Kg/h	61,6 (30,8 x2)	62,8 (31,4 x2)	64 (32 x2)	88 (44 x2)		
Installed gas heating power	kW	20,5 x2	20,5 x2	20,5 x2	30,4 x2		
Installed electrical power	kW	1,34	1,34	1,34	1,94		
VENTILATION							
Fan motor power	kW	0,25 x2	0,25 x2	0,25 x2	0,55 x2		
Ø Fume exhaust	mm	200	200	200	250		
HEAT EMISSION							
Maximum total heat emission	kW	3,3	3,3	3,3	5		
Max. front heat emission	kW	1,2	1,2	1,2	1,9		
DIMENSIONS: Net / Gross							
Width	mm	785 / 865	785 / 865	785 / 865	870 / 950		
Depth	mm	1.001 / 1.084	1.135 / 1.218	1.271 / 1.354	1.312 / 1.395		
Height	mm	1.994 / 2.126	1.994 / 2.126	1.994 / 2.126	2.118 / 2.250		
Weight	Kg	284 / 295	299 / 312	329	374 / 389		
OTHERS							
Sound level	dB	64	64	64	69		
UN TAMBORDOBLE TAMBOR - STACK							
	ECO-ENERGY TOUCH II	DYNAMIC TOUCH II	COMFORT M	ESSENTIAL M	DYNAMIC TOUCH II	COMFORT M	ESSENTIAL M
Touch II	NO	NO	-	-	NO	-	-
IoT – DOMUSCONNECT	NO	NO	-	-	NO	-	-
M Electronic programmer	-	-	NO	NO	-	NO	NO
Autoreverse drum	NO	NO	NO	NO	NO	NO	NO
Inverter	NO	NO	NO	NO	NO	NO	NO
Outer casing in grey skinplate	NO	NO	NO	-	NO	NO	-
White coated external panels	-	-	-	NO	-	-	NO
Stainless Steel drum	NO	NO	NO	-	NO	NO	-
Galvanized drum	-	-	-	NO	-	-	NO
SOFT DRY	NO	NO	NO	NO	NO	NO	-
DOUBLE FLOW (Axial+Radial)	-	NO	NO	NO	NO	NO	NO
FULL FLOW (Optimized axial+radial Flow)	NO	-	-	-	-	-	-
EFFICIENT DRY intelligent moisture control + temperature sensor	NO	OP	-	-	OP	-	-
AIR RECYCLE (Air recycling system)	NO	-	-	-	-	-	-
THERMAL INSULATION - Insulated panels	NO	-	-	-	-	-	-
Double door glass	NO	OP	OP	-	OP	OP	-
SFEX	NO	OP	-	-	OP	-	-
Dosing/Vaporising system (softeners/perfumes)	OP	OP	-	-	OP	-	-
Drum Inlet Temperature control	NO	OP with EFFICIENT DRY	-	-	OP with EFFICIENT DRY	-	-

\*DOMUS reserves the right to modify the technical data without notice.



C. Energia, 12 - Pol. Ind. La Quintana  
08504 Sant Julià de Vilatorrada  
BARCELONA (SPAIN)

#### SALES DEPARTMENT

T. +34 93 888 71 53  
M. +34 649 482 730  
domus@domuslaundry.com  
export@domuslaundry.com

#### AFTER SALES DEPARTMENT

T. +34 93 888 76 73  
sat@domuslaundry.com

#### PARTS DEPARTMENT

T. +34 93 888 76 83  
parts@domuslaundry.com



[WWW.DOMUSLAUNDRY.COM](http://WWW.DOMUSLAUNDRY.COM)

