



WINNING THE FUTURE THROUGH INNOVATION

INTERACTIVE
CATALOGUE



FRONT LOAD WASHER EXTRACTORS

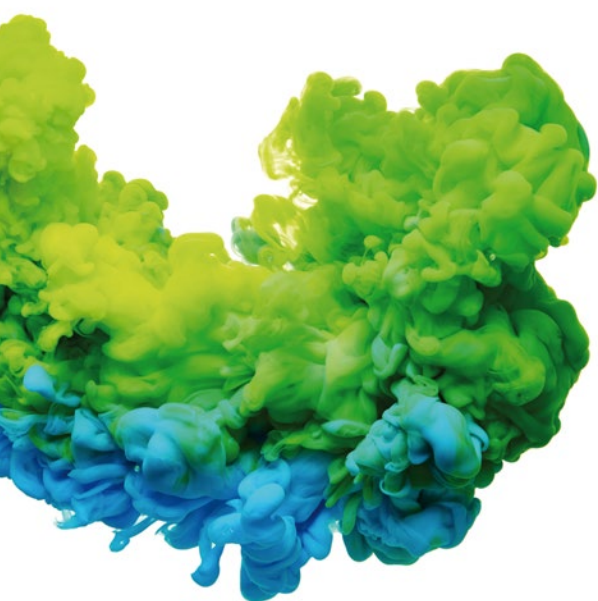
2025

A wide and versatile range

DOMUS presents a cutting-edge range of high and low spin washers, blending advanced design and cutting edge technology with a wide variety of accessories and options.

All models are equipped with the innovative TOUCH II microprocessor, delivering a high G factor, connectivity features, and versatile functionality. When connected to ECOTANK water recovery tanks, DOMUS washers optimise water usage, significantly reducing consumption and operational costs. Additionally, the available weighing options enhance resource efficiency by adjusting water and detergent usage based on load size.

With the latest launches, DOMUS now offers the most extensive range on the market, suiting every need with capacities of 11, 14, 18, 22, 28, 35, 45, 60, 80, 100, and 120 kg.






ECOVOLUTION

by DOMUS



HIGH SPIN WASHERS | G Factor 500-450

TOUCH II PROGRAMMABLE CONTROL							
CONTROL TYPE	HEATING	CAPACITY					
		10-11 kg	13-14 kg	18-20 kg	22-25 kg	28-31 kg	
TOUCH II Programmable Control	Electric, hot water and steam	DHS-11 TOUCH II	DHS-14 TOUCH II	DHS-18 TOUCH II	DHS-22 TOUCH II	DHS-28 TOUCH II	
		FACTOR 500 	FACTOR 500 	FACTOR 500 			
CONTROL TYPE	HEATING	LARGE CAPACITY					
		35-39 kg	42-47 kg	59-65 kg	77-85 kg	95-105 kg	115-130 kg
TOUCH II Programmable Control	Electric, hot water and steam	DHS-35C TOUCH II	DHS-45C TOUCH II	DHS-60C TOUCH II	DHS-80C TOUCH II	DHS-100C TOUCH II	DHS-120C TOUCH II



LOW SPIN | G Factor 200

CONTROL TYPE	HEATING	CAPACITY				
		10-11 kg	13-14 kg	18-20 kg	22-25 kg	28-31 kg
TOUCH II Programmable Control	Electric, hot water and steam	DLS-11 TOUCH II	DLS-14 TOUCH II	DLS-18 TOUCH II	DLS-22 TOUCH II	DLS-28 TOUCH II
CONTROL TYPE	HEATING	LARGE CAPACITY				
		35-39 kg	42-47 kg	59-65 kg	77-85 kg	
TOUCH II Programmable Control	Electric, hot water and steam	DLS-35C TOUCH II	DLS-45C TOUCH II	DLS-60C TOUCH II	DLS-80C TOUCH II	

NOTE: All models can be easily converted to self-service mode except DHS-60, 100C and 120C, with a coin kit, token kit, with central pay or the payment APP thanks to IoT.

HIGH SPIN WASHERS

FACTOR
500 



DHS
G Factor 500/450/350

- ✓ Soft mounted washers, free standing
- ✓ 7" TOUCH II microprocessor
- ✓ DOMUSCONNECT - standard IoT connectivity
- ✓ Panels in skinplate
- ✓ Drum and vat in stainless steel AISI 304
- ✓ R.P.M. between 678 - 1.300
- ✓ Three water inlets
- ✓ 8 signals for automatic dosing
- ✓ Easy to install, no needs of fixation to the floor, no extra costs
- ✓ Savings due to high extraction of water (45% residual humidity)

LOW SPIN WASHERS



DLS

G Factor 200/150

- ✓ Hard mounted washers
- ✓ 7" TOUCH II microprocessor
- ✓ DOMUSCONNECT - standard IoT connectivity
- ✓ Anchoring to floor with anchoring base
- ✓ Panels in skinplate
- ✓ Drum and vat in stainless steel AISI 304
- ✓ R.P.M. between 505 - 759
- ✓ Three water intakes
- ✓ 8 signals for liquid dosing
- ✓ Savings due to high extraction of water (65% residual humidity)

ECOENERGY



TOUCH II

- ✓ **TOUCH II:** Easy-to-use microprocessor, fully programmable with a **7" touchscreen**.
- ✓ **DOMUSCONNECT:** standard and free IoT connectivity.
- ✓ **USB port:** configure, update, and analyse machines without internet connection.
- ✓ **On-screen videos:** add your logo, video advertisements or instructions for use. Especially useful for self-service.
- ✓ **Multilingual interface:** choose your preferred language from a wide and constantly expanding selection.
- ✓ **8 standard signals and 6 extra as an option.**



VERSATILITY

- ✓ **Custom-made:** possibility to customise machines from the factory order with the available options.
- ✓ **OPL < > Self-service**
The standard OPL dryer is transformable to self-service version.
- ✓ **OPL < > Self-service**
The standard OPL washer is transformable to self-service version.
- ✓ **Drain valve < > Pump**
Easily convertible standard models. Easy access and service.
- ✓ **Wet Cleaning:** possibility to create different phases per programme with personalised parameters.
- ✓ **WATER RE-CYCLE:** recirculation of wash water.






G FACTOR

- ✓ **High G-Factor for the whole range** compared to competitors, reducing residual moisture and drying time.
 - **G-Factor 500 - 450** for high speed washers.
 - **G-factor 200** for low speed washers.



CONNECTIVITY

- ✓ **DOMUSCONNECT:** standard and free IoT connectivity. Machine monitoring, error messages, remote desktop, data recovery for technicians, software updates.
- ✓ **Laundry management:** the IoT solution allows managing your laundry by creating discount programmes for customers, viewing statistics, telemetry, and monitoring the business.
-  ✓ **Convenient payments (self-service):** DOMUS LAUNDRY App, card or smart devices with the new DOMUS LAUNDRY KIOSK contactless payment system.
-  ✓ **LEMS Pulse Concentrator by Onnera:** get real-time consumption data.
-  ✓ **New telemetry:** detailed data with dynamic and customisable graphs.



EFFICIENCY

- ✓ **WATER SAVING:** possibility to set three saving levels.
- ✓ **OPTIMAL LOADING:** manual load weight indication.
- ✓ **Consumo inteligente:** ajuste automático del consumo de agua y detergentes.
- ✓ **Ready to be connected to the ECOTANK XL and ECOTANK water recovery tanks.**
- ✓ **Low water consumption:** the standard wash programme consumes less than 8 litres of water per kg per cycle.
- ✓ **G-Factor 500 - 450.**
Reduced residual moisture = reduced drying time.

OPTIONS:

- + Automatic weighing with sensors in the legs.
- + **LEMS Pulse Concentrator by Onnera.**



MAINTENANCE

- ✓ **Hinged panel:** easy and ergonomic access.
- ✓ **Easy access to components:** designed for easy maintenance and repair.
- ✓ **Technical menu:** machine monitoring, error reporting, management, telemetry, and statistics, among others.



ERGONOMICS

- ✓ **The widest door diameters on the market,** designed to simplify loading and unloading, especially in high-capacity washing machines.
- ✓ **Effortless door opening and closing.**

OPTIONS:

- + Ergonomic plinths for leveling heights or for mop cleaning.



TOUCH II

The TOUCH II includes many features based on achieving more efficiency, versatility and connectivity.

User friendly and totally programmable microprocessor

7" touch screen.

Configuration of washing and spinning speed.

Complete regulation of water levels.

Regulable washing temperature from 20 °C to 90 °C.

Standard Wet Cleaning system.

Videos on display

Ads, instructions (useful for self-service laundries).



Intuitive dosing

Easily and intuitively control the detergent dosing of your washing machines. Supports 8 standard signals, with 6 additional signals as an option.



Multilingual interface

Choose your preferred language to display on the TOUCH II screen from a wide and constantly expanding selection.



DOMUSCONNECT:

Maximum efficiency and real-time control

Discover the power of IoT connectivity, integrated for free in all machines with TOUCH II via Ethernet, for advanced and efficient management.

- ✓ Monitor telemetry and statistics in real time.
- ✓ Optimise the performance of your equipment.
- ✓ Ensuring MAXIMUM HYGIENE.
- ✓ Receive remote technical support.
- ✓ Update the software and much more.



USB port

If you don't have an internet connection in your laundry, the USB port allows you to configure, update, and analyse the machines via this connection by downloading and uploading data.



G FACTOR

DOMUS washer extractors, whether high or normal spin, are the ones with the highest G Factor in the market, which ensures minimum residual moisture, and this translates into less energy costs during the drying cycle.

High G Factor reduces residual moisture and drying time

With a higher G Factor, there is more water extraction and less residual moisture in the garments. To obtain a higher G Factor we modify the machine construction, from a hard mount to a soft mount.

Spinning

LOW SPIN

HIG SPIN

RIGID CONSTRUCTION

FLOATING CONSTRUCTION

G Factor



Residual moisture



65%



45%



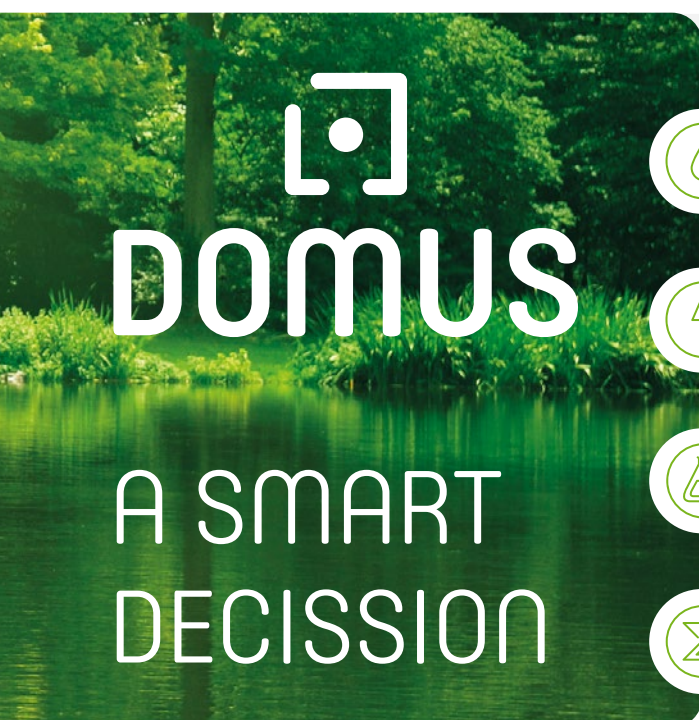
This translates directly in more efficiency in the drying cycle, with a high spin washer, as the drying cycle is much shorter.



EFFICIENCY

In a laundry, the machines are the visible part of an iceberg.

At DOMUS we pay attention to the iceberg part that cannot be seen, to optimize the expenses during the whole Life Cycle Cost.



Start saving with Domus in:



Water

We design our systems to ensure efficient water usage, preventing waste.



Energy

We optimise our machines to guarantee greater energy savings and maximise laundry efficiency.



Chemicals

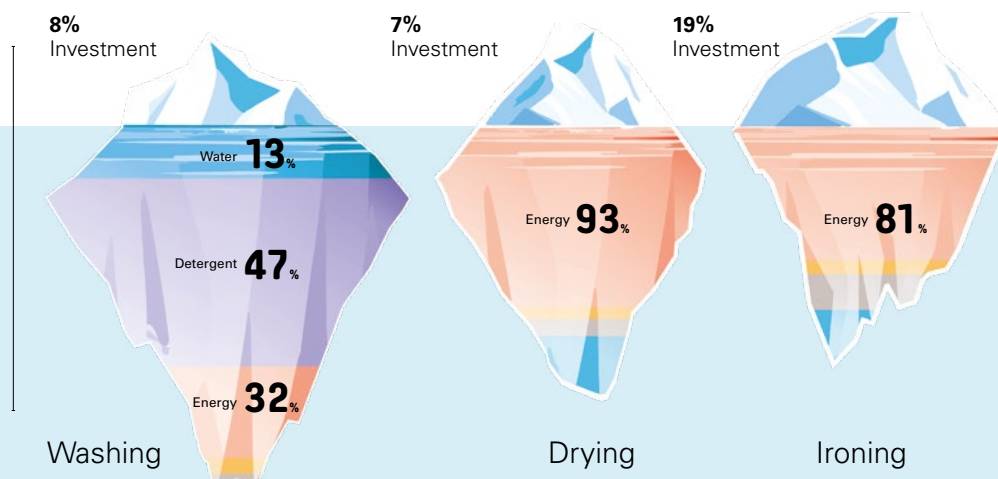
We design our washers and barriers with features that ensure the precise use of chemicals.



Time

We adjust process times, key in a laundry, to increase efficiency and business profitability.

Example of a standard laundry with 50% flat linen and 50% towelling, during the first 10 years of life.





EFFICIENCY

New



Pulse concentrator LEMS by Onnera

New system to control actual consumption and turn your laundry into an ECOSMART LAUNDRY. Discover the savings you can achieve here:



Low water consumption

A standard wash programme consumes less than 8 litres of water per kg and cycle.



Weighing system

Option available in models from DHS-11 to DHS-120. It brings great water, chemicals and energy savings, especially with partial loads, as it adjusts water and chemicals to the real load.

WATER SAVING

Possibility of configuring three savings levels.

Intelligent consumption

Automatic adjustment of water and soap (standard).



ECOTANK XL

Large capacity tanks

Designed to store up to **1000 litres**, allowing to save large volume of water.



Combinables

The ECOTANK XL can be integrated with different Domus machines with TOUCH II, offering multiple configuration options:

- ✓ It is possible to combine 1, 2 or 3 ECOTANK XL tanks for a larger capacity system.
- ✓ Each ECOTANK XL tank can connect up to:
 - 8 machines of 35 / 45 kg.
 - 4 machines of 60 / 80 kg.
 - 3 machines of 100 / 120 kg.

Ideal for industrial laundries

with large capacity machines

ECOTANK

80 and 150 litre tanks

to save a lot of water in small spaces.



Versatile

Each machine can be connected to 1, 2 or 3 tanks, depending on the type of linen being processed, among others.

Little space required

Thanks to its compact design organized in a column, it is ideal for companies with small spaces and for reusing water from small machines.



VERSATILITY

To adapt to the needs of the different businesses.

Customization

New possibility to customise the machine from factory with the available options.

Electric <> Hot water

Standard electric models easily transformable to hot water models.

Drain valve <> Pump

Standard models easily transformable
Easy access and service.

WATER RE-CYCLE

Optional kit to increase the care of the linen: recirculation of the bath water, which increases the water flow with chemicals, shortens the cycle and improves the effectiveness without mechanical action.



Wet Cleaning[®]

Thanks to DOMUS constant development, our models are equipped with the features to use Wet Cleaning programs:

- ✓ Fully programmable TOUCH II.
- ✓ Total control of temperature and water levels.
- ✓ Programmable washing speed: very low (13 R.P.M.).
- ✓ Rhythm on/off 3 seg/40 seg.
- ✓ Total control of dosing signal.








Payment options

Domus offers you maximum flexibility with **three payment systems that can be combined**, allowing you to choose one or more for your laundry or Clean&Move module.

1 DOMUS LAUNDRY KIOSK

Optimise your laundry with contactless payments and remote control. Provide convenience and security for your customers while managing pricing and promotions from anywhere with DOMUSCONNECT.

-  Available in 12' and 32' screens.
-  Allows payments by card or smart device (NFC).
-  Minimal fees.
-  High compatibility and easy to install.
-  Very intuitive and quick to use.



2 Payment via App DOMUS LAUNDRY

Allows remote machine reservation and payment, helping to build customer loyalty with promotional offers.



3 Payment with COIN / TOKEN

Washers and dryers can include coin/token payment systems in various currencies.



Click or tap the button to find out more details about payment options.



CONNECTIVITY

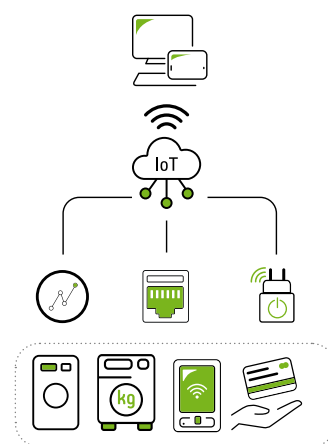
All DOMUS machines with TOUCH II come with IoT connectivity as standard and free of charge, enabling full remote management to improve efficiency, control, and business operations.

DOMUSCONNECT (IoT): the solution for your laundry

The Internet of Things (IoT) connects everyday objects to the internet, allowing real-time remote control and process optimisation.

DOMUSCONNECT is a free laundry management platform that takes IoT to its full potential, transforming the operations of your OPL or self-service laundry.

With this platform, you can increase efficiency, reduce costs, and enhance your customers' experience from anywhere.



Main features of DOMUSCONNECT



Accessible from any device

Manage your laundry from a computer, tablet, or smartphone.



Free updates

Receive regular new features to keep your business at the forefront.



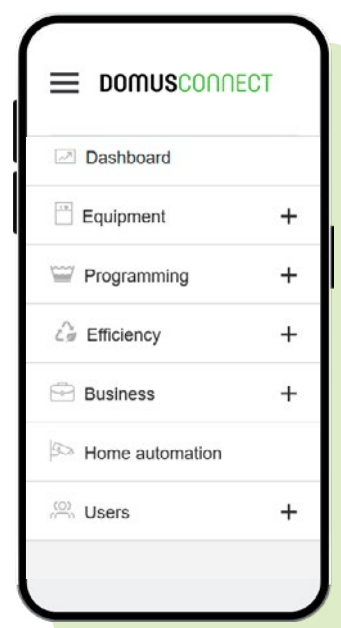
Highly secure

Advanced security ensures the integrity and confidentiality of your data at all times.



Available in multiple languages

Expanding continuously to suit your needs.



What are the benefits for each profile?



As an owner you can:

- Manage your business remotely, avoiding unnecessary travel.
- Use an intuitive interface to streamline operations.
- Access production reports, cycles, consumption, and revenue data.
- Ensure process control for washing and drying.
- Guarantee hygiene, disinfection, and quality in every cycle.



For your self-service customer, they can:

- Make quick and secure payments via card (new), tokens, or the App.
- Enjoy personalised promotions.
- Check machine status in real time, avoiding waiting times.
- Operate with an intuitive, user-friendly interface.



For service technicians:

- Provide remote assistance to minimise on-site visits.
- Access precise data via the new telemetry system to improve operations.
- Perform remote software updates to keep machines up-to-date..



For chemical suppliers:

- Manage and create washing and drying programmes online.
- Control chemical dosing via RS-485.
- Monitor executed programmes in real time.



As a distributor, you can:

- Leverage the platform to support new business ventures, manage leasing, maintenance contracts, and self-service setups.
- Access detailed databases of installed machines, geographical distribution, and models for efficient management.





ERGONOMICS

As health and safety at work had become an important issue, our equipment is designed to be the most comfortable for the user.

Biggest door diameters in the market

Helpful, mainly for big capacity washers, for loading and unloading the garments.

Easy opening/closing system for door lock

New 180° door opening in all models (high and low spin).

Plinths for 11, 14, 18, 22 and 28 kg models

To align loading height (door base at 850 mm).

Reversible door





MAINTENANCE

One of DOMUS concerns is to make life easier for our clients. That includes offering quality equipment and parts of reputed brands, which demand little maintenance.

Easy access for reparability

Washers are designed to offer an easy maintenance and reparability.

Equivalent parts

Most key parts are the same for all models (inverters, contactors, electronic devices, gear...).

Hinged panels

Control panel and now also bottom panel can easily be opened for a quick and ergonomic access.

Technical menu

Machine monitoring, machine error warning, management for telemetry and statistics. Remote desk and data recovery for technicians and maintenance, software update, etc.

Increased robustness

New feet as standard in 35 and 45kg.



ECOSMART LAUNDRY

by DOMUS

THE LAUNDRY OF THE FUTURE HAS ALREADY ARRIVED.

Domus latest generation, high-performance and connected equipment allows you to manage and monitor resource consumption in real time thanks to cutting-edge technology. Ideal for any type of business and sector.



Add DOMUS washers and ECOTANK XL to your ECOSMART LAUNDRY

And save 40–70% water per cycle with the 1,000-litre ECOTANK XL and integrated weighing system, optimising resources while maintaining outstanding performance.

*Depending on the types of programs, garments and processes.





LEMS by Onnera - Total control of consumption

With the new LEMS pulse concentrator and DOMUSCONNECT (IoT), you can retrieve all the data and analyze the efficiency of your washing machines and the ECOTANK XL such as water, energy and other resources of your industrial laundry.



DOMUSCONNECT

The data collected by LEMS, added to other metrics and values of your laundry, are integrated into the DOMUSCONNECT platform, allowing you to monitor and control your business live and obtain **detailed management, hygiene and efficiency reports**.



Washer extractors technical data

 HIGH SPIN												
UNIT.		DHS-11	DHS-14	DHS-18	DHS-22	DHS-28	DHS-35C	DHS-45C	DHS-60C	DHS-80C	DHS-100C	DHS-120C
DRUM												
Load capacity (kg) 1:9 / 1:10	Kg	11/10	14/13	20/18	25/22	31/28	39/35	47/42	65/59	85/77	105/95	130/115
Volume	l	100	130	180	220	280	350	420	590	770	950	1.150
Diameter	mm	532	620	700	700	770	860	860	1.048	1.048	1.360	1.360
Depth	mm	425	430	470	560	585	602	720	680	892	637	775
GENERAL DETAILS												
Washing speed / Spining speed	r.p.m.	50/1.300	50/1.204	47/1.133	47/1.071	45/1.024	42,5/966	42,5/966	38/875	38/875	34/678	34/678
G Factor	-	500	500	500	450	450	450	450	450	450	350	350
Noise level	dB	< 70	< 70	< 70	< 70	< 70	< 70	< 70	< 70	< 70	< 70	< 70
Self-service laundry version	-	STD	STD	STD	STD	STD	STD	NO	NO	NO	NO	NO
Double drainage	-	NO	OP	OP	OP	OP	OP	OP	OP	OP	OP	OP
Weighing System	-	OPC	OPC	OPC	OP	OPC	OP	OP	OP	OP	OP	OP
Tilting System	-	NO	NO	NO	NO	NO	NO	NO	OP	OP	OP	OP
SLUICE option	-	NO	NO	NO	NO	NO	NO	NO	NO	NO	NO	NO
DOOR												
Height center door / Height base door	mm	630/370	700/440	765/450	765/450	865/560	1.000/640	1.000/640	1.170/810	1.170/810	1.330/900	1.330/900
Diameter	mm	373	373	460	460	460	560	560	560	560	700	700
POWER												
Motor	kW	0,75	1,1	2,2	2,2	4	6	6	15	15	15	15
Electric heating power	kW	6	9	12	12	18	21	21	36	48/36	-	-
Total electric power (elec- tric model)	kW	6,25	9,4	12,75	12,75	19,2	22	22	39	51/39	-	-
Total electric power (hw, steam model)	kW	0,75	1,1	2,2	2,2	4	6	6	15	15	15	15
CONNECTIONS												
Steam intake (steam mod.)	inch	1/2"	1/2"	1/2"	1/2"	3/4"	3/4"	3/4"	3/4"	3/4"	1-1/4"	1-1/4"
Water intake	inch	3/4"	3/4"	3/4"	3/4"	3/4"	3/4"	3/4"	1"	1"	1-1/2"	1-1/2"
Drain	inch	3"	3"	3"	3"	3"	3"	3"	3"	3"	4"	4"
DIMENSIONS												
Width	mm	692	788	884	884	979	1.095	1.095	1.420	1.420	1.836	1.836
Depth	mm	830	869	913	1.003	1.080	1.184	1.304	1.433	1.645	1.710	1.832
Height	mm	1.185	1.307	1.405	1.405	1.550	1.730	1.730	1.890	1.890	2.245	2.245
Net weight	kg	198	236	344,6	360	524,5	735	747	1.454	1.800	2.300	2.762
PACKING DIMENSIONS												
Width	mm	738	850	945	945	1.045	1.205	1.205	1.600	1.600	1.940	1.940
Depth	mm	975	1.015	1.030	1.115	1.210	1.330	1.440	1.595	1.805	2.030	2.030
Height	mm	1.440	1.600	1.680	1.680	1.810	1.850	1.850	1.930	1.930	2.290	2.290
Gross weight	kg	239	274,5	388	403,5	548,5	786	853	1.544	2.000	2.600	3.058
Volume	m³	1,03	1,38	1,63	1,77	2,28	2,7	3,3	4,9	5,6	9	9

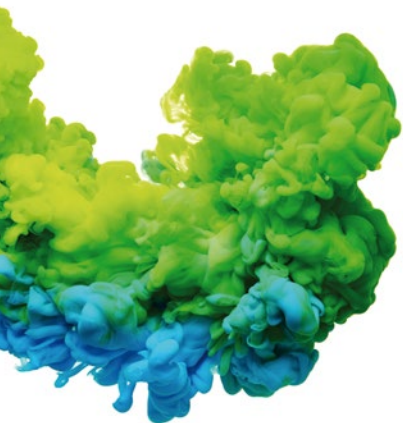
NO Not available | **OP** Optional, extra cost | **STD** Standard

DOMUS reserves the right to modify technical data without prior notice.

LOW SPIN										
UNIT.		DLS-11	DLS-14	DLS-18	DLS-22	DLS-28	DLS-35C	DLS-45C	DLS-60C	DLS-80C
DRUM										
Load capacity (kg) 1:9 / 1:10	Kg	11/10	14/13	20/18	25/22	31/28	39/35	47/42	65/59	85/77
Volume	l	100	130	180	220	280	350	450	600	800
Diameter	mm	620	620	700	700	770	860	860	1.048	1.048
Depth	mm	330	430	470	560	585	602	720	684	936
GENERAL DETAILS										
Washing speed / Spining speed	r.p.m.	53/759	53/759	50/714	50/714	48/682	45/644	45/644	42,5/505	42,5/505
G Factor	-	200	200	200	200	200	200	200	150	150
Noise level	dB	< 70	< 70	< 70	< 70	< 70	< 70	< 70	< 70	< 70
Self-service laundry version	-	STD	STD	STD	STD	STD	STD	STD	STD	STD
Double drainage	-	NO	OP	OP	OP	OP	OP	OP	OP	OP
Weighing System	-	NO	NO	NO	NO	NO	NO	NO	NO	NO
Tilting System	-	NO	NO	NO	NO	NO	NO	NO	NO	NO
SLUICE option	-	STD	STD	STD	STD	STD	STD	STD	STD	STD
DOOR										
Height center door / Height base door	mm	570/310	570/310	655 / 348	655 / 348	700 / 400	735 / 440	735 / 440	900 / 540	900 / 540
Diameter	mm	373	373	460	460	460	560	560	560	560
POWER										
Motor	kW	1,1	1,1	2,2	2,2	4	4	6	5,5	7,5
Electric heating power	kW	6	9	12	12	18	21	21	36	48
Total electric power (elec- tric model)	kW	6,25	9,5	12,75	12,75	19,2	22	22	38	50,5
Total electric power (steam model)	kW	1,1	1,1	2,2	2,2	4	4	6	5,5	7,5
CONNECTIONS										
Steam intake (steam mod.)	inch	1/2"	1/2"	1/2"	1/2"	3/4"	3/4"	3/4"	3/4"	3/4"
Water intake	inch	3/4"	3/4"	3/4"	3/4"	3/4"	3/4"	3/4"	1"	1"
Drain	inch	3"	3"	3"	3"	3"	3"	3"	3"	3"
DIMENSIONS										
Width	mm	719	719	788	788	884	979	979	1.225	1.225
Depth	mm	755	856	935	1.035	1.075	1.155	1.325	1.315	1.492
Height	mm	1.165	1.165	1.307	1.307	1.340	1.411	1.411	1.640	1.640
Net weight	kg	198	210	272	295	403	476	600	792	871
PACKING DIMENSIONS										
Width	mm	782	782	850	850	945	1.045	1.125	1.335	1.335
Depth	mm	890	990	1.013	1.106	1.230	1.280	1.440	1.440	1.660
Height	mm	1.400	1.400	1.583	1.583	1.583	1.655	1.640	1.860	1.860
Gross weight	kg	231,6	245	309	335	431	510	670	878	963
Volume	m³	0,97	1,08	1,36	1,5	1,84	2,2	2,6	3,6	4,12

NO Not available | **OP** Optional, extra cost | **STD** Standard

DOMUS reserves the right to modify technical data without prior notice.



C. Energia, 12 - Pol. Ind. La Quintana
08504 Sant Julià de Vilatorrada
BARCELONA (SPAIN)

SALES DEPARTMENT

T. +34 93 888 71 53
M. +34 649 482 730
domus@domuslaundry.com
export@domuslaundry.com

AFTER SALES DEPARTMENT

T. +34 93 888 76 73
sat@domuslaundry.com

PARTS DEPARTMENT

T. +34 93 888 76 83
parts@domuslaundry.com



WWW.DOMUSLAUNDRY.COM

