



ECO TANK XL

&

ECO TANK

2025

ECOTANK XL ECOTANK

Save water, energy and chemicals!

In today's world, the need to save water is more pressing than ever. Industrial laundries play a crucial role in this fight for sustainability.

The unique ECOTANK XL and ECOTANK tanks are the ideal solution for optimising water consumption in your laundry, designed for maximum savings without the hassle.

With models for both small and large capacities, Domus' different ranges of water recovery tanks allow you to recover up to 70% of the water used in each wash cycle, helping you to reduce costs and care for the environment.

With ECOTANK and ECOTANK XL, your investment will be smart and sustainable.





ECOTANK XL

For large laundries and high capacity machines.

- ✓ Capacity of **1000 litres** of water per tank.
- ✓ Structure with trim panel.
- ✓ Pumps and filters.
- ✓ Combinable with other ECOTANK XL and with various machines.¹

ECOTANK

For laundries with limited space and smaller capacity machines

- ✓ Capacity of **80 to 150 litres** of water per tank, up to 3 tanks arranged in a column.
- ✓ Structure with feet.
- ✓ One ECOTANK with 1, 2 or 3 tanks per machine.²

Savings of up to 40-70% on water, as well as chemicals and energy.³

2 level sensors in each tank.

Made of high-density polyethylene and external reinforcement.

¹ See conditions and uses page 6. / ² See conditions and uses page 14.

³ These percentages may vary depending on the types of programs, garments, and processes, among other factors.

ECOTANK XL

OUTSTANDING FEATURES

Large capacity tanks

Designed to store up to 1000 litres, allowing to save large volume of water.

- ✔ Installation possible on the side, next to the machines, or at height, above them (see page 6).

Combinable

Different ECOTANK XL can be combined with different Domus machines with TOUCH II.

- ✔ It is possible to combine 1, 2 or 3 ECOTANK XL tanks for a larger capacity system.
- ✔ Each ECOTANK XL tank can connect up to:
 - 8 machines of 35 / 45 kg
 - 4 machines of 60 / 80 kg
 - 3 machines of 100 / 120 kg



Durable

Made of high density polyethylene and external reinforcement with galvanized steel structure.

- ✔ Interior with rounded corners to prevent dirt accumulation and facilitate cleaning.
- ✔ With holes to be fixed to the ground.
- ✔ The trim panel can be customised.



Perfect for industrial laundries

Made for large capacity machines.



EFFICIENCY



Save 40 to 70% of water*

by reusing water in the different phases of washing and rinsing clothes.



Save up to 40% energy*

by reducing signals from dosing pumps and conventional pressure systems, processes that require a considerable amount of energy.

*These percentages may vary depending on the types of programmes, garments and processes, among others.



Save on detergents

by optimizing the use of water in the different washing phases. The ECOTANK XL reduces the need of chemicals to treat water, taking advantage of the purity of the water in each cycle.



INSTALLATION

Fixing

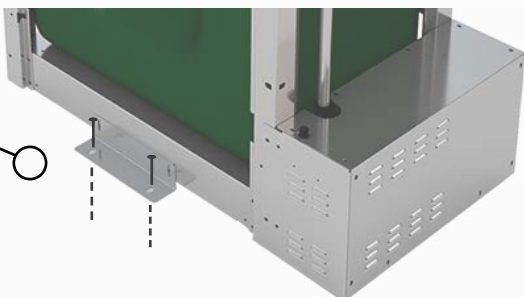
Holes are integrated to facilitate anchoring to the ground.

Accessory kit available

For easy connection of washing machines and barriers to tanks (option).

2 water level sensors

in each tank, which indicate the minimum and maximum level of water.



KEY POINTS

For an eco-friendly and modern laundry with ECOTANK XL, perfectly adapted to large capacity machines.

WHAT IS NEEDED?

1. Have one or more Domus front washer or barrier washer controlled by TOUCH II and compatible capacities.

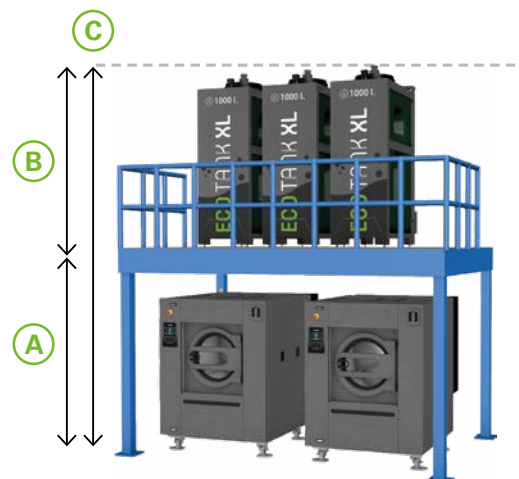
- ✓ **TOUCH II industrial washers** with capacity 35, 45, 60, 80, 100, 120 kg.
- ✓ **TOUCH II barrier washers** with capacity 27, 35, 50, 70, 100 kg.



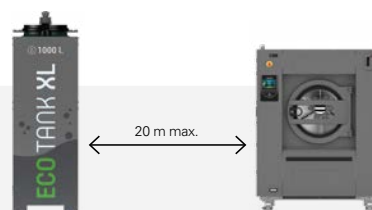
2. Consider space required to place tanks next to or above washers/barriers to meet operating parameters.

Height installation:

- (A) Height of the base: minimum 2.5 m and maximum 3 m.
- (B) Height of the tanks: 2 meters.
- (C) Maximum height of the base + tanks: 5 meters. The platform is not included.



Side installation: Maximum lateral distance between washing machines and tanks: 20 meters.





3. Have a water and electricity connection.

Connections not included with the tank.



1" solenoid valves from tanks to washing machines and from pumps to tanks.

4. Ready for tank.

Kit to be ordered with the washing machines.

5. Make connections between machines and tanks.

"Flexible and accessory kit" available as an option to connect 1 washer/barrier to 3 tanks. Each kit includes:

- ✔ 25 meters flexible.
- ✔ 25 meters electrical hose.
- ✔ 6 pcs T connection.
- ✔ 12 clamps.



Example of side installation, with electrical connection cables for 2 washers and 3 tanks.

HOW IS IT CONTROLLED?

Everything is easily managed from the **TOUCH II** control of the washing machine or barrier, allowing you to activate the tanks, configure filling and draining, create your own programs and optimize the process according to your needs.



Choose the water source

You can decide which water inlets to fill the drum of the washer or barrier.

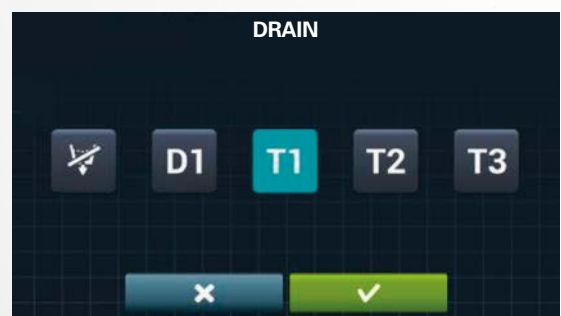
- ✔ Hot water inlet.
- ✔ Cold water inlet.
- ✔ Hot and cold water inlet for faster filling with or without temperature control.
- ✔ T1 /T2 /T3: the washer/barrier selects tank 1, 2 or 3 for the water inlet.



Choose the water destination

You can choose whether the destination of the water in the drum will be the drain or an installed tank.

- ✔ **D1: Drainage through the main valve.**
This valve will drain the water to the installation drain. The water will not be recovered.
- ✔ **T1 /T2 /T3: drain into the tank.**
If tanks are installed, we can also decide to send the water from the drum to one of these tanks. Simply select the tank in which we want to store the water.



HOW TO MAINTAIN IT?

Proper maintenance is the key to ensuring maximum hygiene.

Cleaning filters and tanks

to keep equipment in perfect condition

- ✔ **Cleaning the tank pump filter.**
- ✔ **Cleaning the washing machine pump filter.**
- ✔ **Cleaning the ECOTANK XL.** This should be done with pressurized water from the top of the tank.
- ✔ Monitoring water quality.
- ✔ Performing a chemical check.



ECOSMART LAUNDRY

by DOMUS

THE LAUNDRY OF THE FUTURE HAS ALREADY ARRIVED.

Domus latest generation, high-performance and connected equipment allows you to manage and monitor resource consumption in real time thanks to cutting-edge technology. Ideal for any type of business and sector.



Add ECOTANK XL

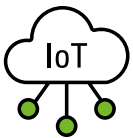
By incorporating the ECOTANK XL into your **ECOSMART LAUNDRY**, your laundry becomes much more efficient and sustainable, thus increasing the profitability of your business.





LEMS by Onnera - Total control of consumption

With the new LEMS pulse concentrator and DOMUSCONNECT (IoT), you can retrieve all the data and analyze the efficiency of your washing machines and the ECOTANK XL such as water, energy and other resources of your industrial laundry.



DOMUSCONNECT

The data collected by LEMS, added to other metrics and values of your laundry, are integrated into the DOMUSCONNECT platform, allowing you to monitor and control your business live and obtain **detailed management, hygiene and efficiency reports**.

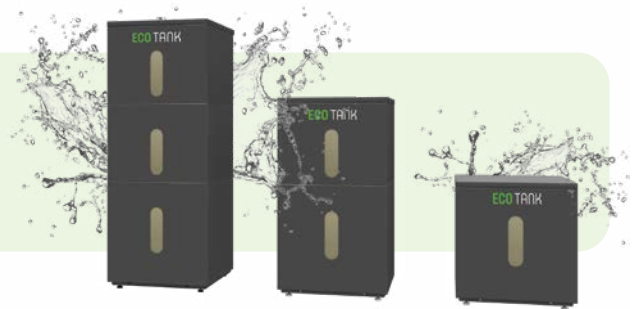


ECOTANK

OUTSTANDING FEATURES

80 and 150 litre tanks

to save a lot of water in small spaces.



In column

Each washer or barrier can have 1, 2 or 3 tanks in a column.

Durable

Made of high density polyethylene and external reinforcement with skinplate panel structure, stainless steel aesthetics.

- ✓ Interior with rounded corners to prevent dirt accumulation and facilitate cleaning.



Prepared for Wet Cleaning



Possibility to use the tanks to premix water and chemical products, avoiding direct contact of delicate garments with detergents.

Little space required

Thanks to its compact design organized in a column, it is ideal for companies with small spaces and for reusing water from small machines.



EFFICIENCY



Save water

by reusing water in the different phases of washing and rinsing clothes.



Save energy

by reducing signals from dosing pumps and conventional pressure systems, processes that require a considerable amount of energy.



Save on detergents

by optimizing the use of water in the different washing phases. The ECOTANK reduces the need of chemicals to treat water, taking advantage of the purity of the water in each cycle.



EASY MAINTENANCE AND INSTALLATION

Plug and Play

Easy to connect and install on washers with TOUCH II control.

2 water level sensors

in each ECOTANK tank, which indicate the minimum and maximum level of water.

Self-cleaning

Thanks to the predefined programs of the TOUCH II control.

Removable tanks

for easy cleaning and maintenance.

KEY POINTS

For an eco-friendly and modern laundry with ECOTANK, perfectly adapted to small capacity machines and small spaces.

WHAT IS NEEDED?

1. Have one or more Domus front or barrier washers controlled by TOUCH II and compatible capacities.

✓ **80 litre tanks**

- Front washers TOUCH II: 11 a 18 kg.
- Barrier washers TOUCH II: 16 kg.

✓ **150 litre tanks**

- Front washers TOUCH II: 22 a 28 kg.
- Barrier washers TOUCH II: 22 kg.



2. Consider the location to meet operating parameters.

3. Have an electricity connection. Connections not included with the tank.

4. "Ready for tank" kit to be ordered with the washing machines.



HOW IS IT CONTROLLED?

This compact version is ideal for small capacity machines and small spaces. It is controlled by the TOUCH II control of the washer or barrier, and the filling can be configured automatically or manually.

Intuitive control thanks to the TOUCH II

It is managed from the control of each machine associated with the ECOTANK.

- ✓ You can decide the water inlets and outlets to fill and empty the drum of the machine.
- ✓ 2 water level sensors in each tank (maximum and minimum level).
- ✓ The water recovery system fills each tank via filling valves.
- ✓ Possibility to create programs in the washing machines for self-cleaning of the tanks.



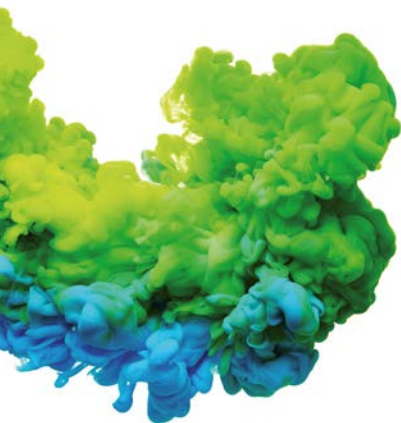
Tank 1
Water from last rinse



Tank 2
Water from first and/or
second rinse



Tank 3
Water from wash cycle
for following pre-wash

**ECOTANK XL****ECOTANK**

Capacity of each tank	1000 Litres	80 Litres (por 1, 2 o 3) 150 Litres (por 1, 2 o 3)
Tension	230V I	230V I
Drain Ø	1"	3/4"
Net dimensions (width x depth x height)	702 x 1.375 x 2.206 mm	80 I - T1 551 x 722,6 x 607,8 80 I - T2 551 x 722,6 x 1022,8 80 I - T3 551 x 722,6 x 1.437,8 <hr/> 150 I - T1 551 x 1272,6 x 607,3 150 I - T2 551 x 1.272,6 x 1.022,3 150 I - T3 551 x 1.272,6 x 1.437,8
Net weight	147 kg	80 I 60 kg (T1), 60 kg (T2), 80 kg (T3) <hr/> 150 I 60 kg (T1), 60 kg (T2), 80 kg (T3)

C. Energia, 12 - Pol. Ind. La Quintana
08504 Sant Julià de Vilatorrada
BARCELONA (SPAIN)

SALES DEPARTMENT

T. +34 93 888 71 53
M. +34 649 482 730
domus@domuslaundry.com
export@domuslaundry.com

AFTER SALES DEPARTMENT

T. +34 93 888 76 73
sat@domuslaundry.com

PARTS DEPARTMENT

T. +34 93 888 76 83
parts@domuslaundry.com



WWW.DOMUSLAUNDRY.COM

