

INDUSTRIAL LAUNDRY SPECIALISTS

2025

THE WIDEST RANGE OF EQUIPMENT

HPL HEAVY PROFESSIONAL

Heavy Professional laundry equipment which adapts to any business need. Small capacity, robust, efficient and really versatile models. Connectivity and industrial features to achieve the most efficiency and productivity, but a modest price.

Electric and gas dryers. New heat pump models.



Washers
8 - 10 kg



Dryers HPD
8 - 10 kg



They are stackable, ideal for saving space in self-service laundromats.

WASHING

Domus **industrial washers**, both high and low-speed models, as well as **barrier washers**, offer advanced technology to maximize efficiency and productivity. With a high G FACTOR, TOUCH II touchscreen, and standard connectivity options, they ensure hygiene and versatility in every cycle.

Additionally, save 40 to 70% of water with the **ECOTANK** and the new **ECOTANK XL**.



Washers
11-28 kg (high and low speed)
Compatible with **ECOTANK**



Washers
35-120 kg (high speed)
Compatible with **ECOTANK XL**
35-80 kg (low speed)
Compatible with **ECOTANK XL**



Barrier washers
16-22 kg
Compatible with **ECOTANK**
27-100 kg
Compatible with **ECOTANK XL**

DRYING

Discover our complete range of industrial dryers, featuring **single drum, double drum, or heat pump models**, adaptable to your needs and offering customizable options such as sliding doors (45-80 kg in specific models). With advanced technology, they guarantee efficiency and connectivity to optimize processes and enhance control over your business.



Double drum
11, 14, 18, 22 kg



Single drum
From 11 to 80 kg

- Models with TOUCH II microprocessor.
- All TOUCH II models come with DOMUSCONNECT (free and standard IoT).
- It has models for Wet Cleaning.

IRONING

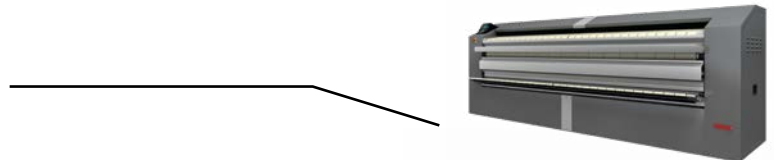
The drying, ironing, and folding of flat linen are optimized with our wide range of **ironing machines, wall-mounted flatwork ironers**, and **compact flatwork ironers**, available in various widths and diameters. You can choose between electric, gas, or steam heating, depending on the size of your business and the volume of linen to be processed, tailored to your specific needs.

✓ **WALL IRONERS** electric heating and roll Ø 180 mm and Ø250 mm.



✓ **WALL FLATWORK IRONERS** electric or gas heating, roll Ø 200 mm, 325 mm and working width up to 3.300 mm.

✓ **FLATWORK IRONERS** roll Ø 500 mm and Ø 650 mm, TOUCH II microprocessor, lengthfolder and many efficient and productivity features.



✓ **COMPACT IRONERS** these are ideal for reduced laundries, with folder and roll diametres 600 mm, 800 mm and 1.000 mm.



New



ECO₃ OZONE CABINETS

The **ECO3 OZONE** cabinet series are cabins designed to **deodorize** and **sanitize** all kinds of clothes, accessories and materials by using ozone.

This natural system **eliminates odors and disinfects** garments without the need for chemical products, providing an effective and eco-friendly solution.



ACCESORIES AND FINISHING

We offer a wide range of equipment for the perfect finishing of garments: steam generators, presses, mannequins, and professional ironing tables.

Additionally, we provide carts for dry and wet laundry, professional hangers, bagging machines, and shelving carts, all designed to optimize transportation and facilitate the finishing process.



SOLUTIONS

SELF-SERVICE

Clean&Go

A daring, modern and functional design to create and decorate your own self-service laundry. Thanks to the use of the most advanced technology in connectivity features, it is ideal for the easy management and full control of your business.



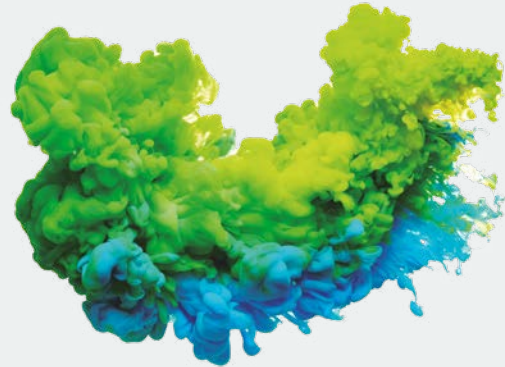
Clean+us

Heavy Professional washers and dryers (8 and 10 kg), are ideal for small self-service businesses such as hairdressers, campsites, gyms, nurseries, hotels, etc.



Clean&Move

The new transportable mobile laundry is fully equipped, easy to transport and install, and has various customizable options, such as adding contactless payment screens, home automation, or solar panels, among others.




Payment options

Gain flexibility by allowing the choice between **three compatible and combinable payment systems**, designed to meet the needs of each location and owner.

 **DOMUS LAUNDRY KIOSK**, the new contactless payment center with 32" and 12" touchscreen displays.

 **DOMUS LAUNDRY App**.

 **Coiner / token**.



WET CLEANING

The Wet Cleaning system allows you to cleanse with water the most delicate garments. Thanks to our constant development, we get the best washing, drying and finishing programs, specially designed for garments that need the best treatment.

PROFESSIONAL SET



INDUSTRIAL SET



Cleanroom

Cleanrooms are used in areas sensitive to environmental contamination or in a medical research context. Domus is specialized in this field where linen should be processed on site, by producing equipment with specific cleanroom features. Barrier washers: 16 to 100 kg. Tumble dryers: 11 to 80 kg.

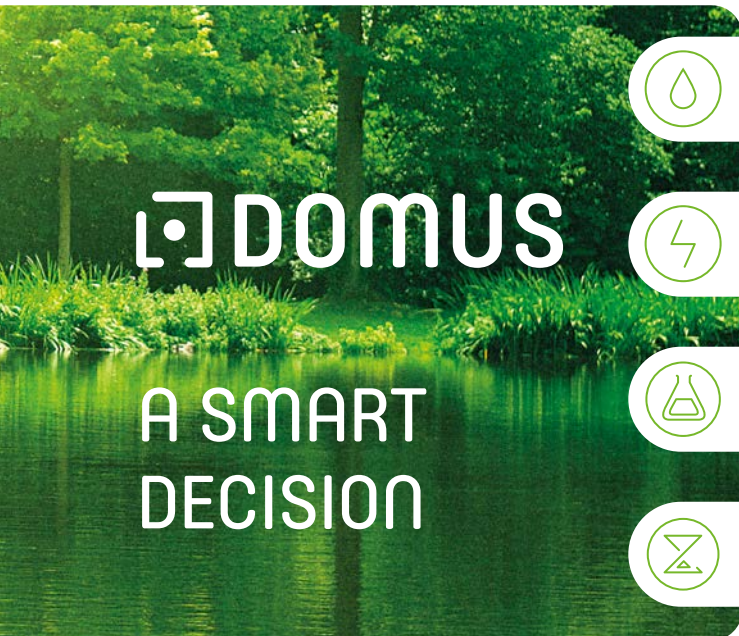
The perfect balance between INNOVATION, EFFICIENCY and SAVINGS

At Domus we have a strong commitment with the environment. We aim to find the perfect balance between Innovation, Efficiency and Savings, this was almost an obsession for us for the last few years.

We have made a serious investment in R&D&I for the latest technology, developing features in each of the new ranges of ECO-ENERGY washers, dryers and

ironers. In this way, we created a new generation of low consumption, efficient and technologically really advanced equipment.

Our premise is evolution, effort and trust in our products and in our clients, in what we do and in how do we do it.



Water

We designed our systems to ensure efficient water use, preventing waste.

Energy

We optimize our machines to guarantee greater energy savings and maximize efficiency in the laundry process.

Chemicals

We design our washing machines with features to ensure the most accurate use of chemicals.

Time

We adjust process times, a key factor in laundry operations, increasing efficiency and business profitability.

ECOVOLUTION
by **DOMUS**



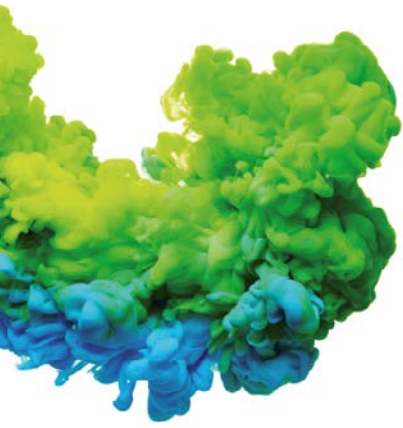
TECHNOLOGY & INNOVATION



EFFICIENCY



INTEGRAL SOLUTIONS



MANUFACTURER OF INDUSTRIAL LAUNDRY EQUIPMENT



DOMUS provides a comprehensive service to its network of distributors and customers. Customer service is a priority, at both commercial and technical levels.

A leading modern company in the industrial and self-service laundry sector, which in 2022 celebrated its centenary.



C. Energia, 12 - Pol. Ind. La Quintana
08504 Sant Julià de Vilatorrada
BARCELONA (SPAIN)

SALES DEPARTMENT

T. +34 93 888 71 53
M. +34 649 482 730
domus@domuslaundry.com
export@domuslaundry.com

AFTER SALES DEPARTMENT

T. +34 93 888 76 73
sat@domuslaundry.com

PARTS DEPARTMENT

T. +34 93 888 76 83
parts@domuslaundry.com



WWW.DOMUSLAUNDRY.COM

