



WINNING THE FUTURE THROUGH INNOVATION

INTERACTIVE  
CATALOGUE



# HEAVY PROFESSIONAL LAUNDRY

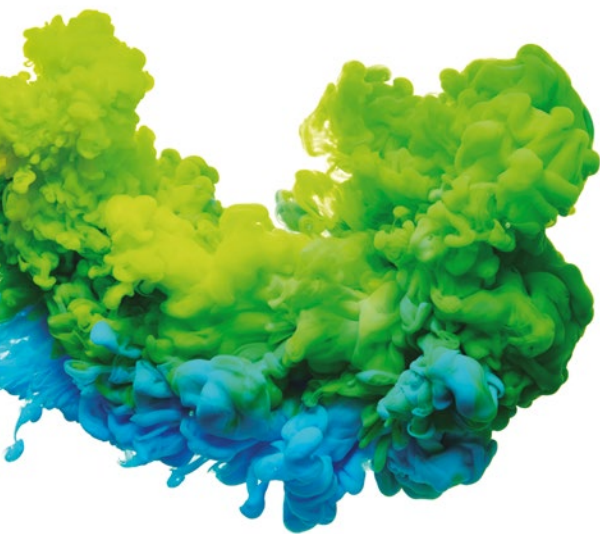
2025

## Heavy Professional Laundry

Heavy Professional Laundry, specifically designed for your own business. A range tailored to meet the needs of your professional activity.

Heavy Professional Laundry is DOMUS' answer to the needs of a different client. A customer that demands equally robust, programmable, efficient and environmentally friendly machines, like the industrial models. The machines offer identical benefits but with greater versatility, a more manageable size and a more affordable price. Perfectly equipped to give you a quality, fast, flexible and economic service. Just the one you need.

Welcome to Heavy Professional Laundry.





## HPW - HEAVY PROFESSIONAL WASHERS | G-Factor 450

CONTROL TYPE	HEATING	CAPACITY			
		8 kg		10 kg	
TOUCH II Programmable Control	Electric - HW	Valve HPW-8 V TOUCH II	Pump HPW-8 P TOUCH II	Valve HPW-10 V TOUCH II	Pump HPW-10 P TOUCH II



## HPD - HEAVY PROFESSIONAL TUMBLE DRYERS

CONTROL TYPE	HEATING	CAPACITY	
		8 kg	10 kg
TOUCH II Programmable Control	Electric Gas	HPD-8 TOUCH II E HPD-8 TOUCH II G	HPD-10 TOUCH II E HPD-10 TOUCH II G
ELECTRONIC CTRL M	Electric Gas	HPD-8 M E HPD-8 M G	HPD-10 M E HPD-10 M G
ELECTRONIC CTRL M	Electric Gas		HPDL-10 M E TRIF. HPDL-10 M E MONO. HPDL-10 M G
TOUCH II Programmable Control	Heat pump	New HPD-8 TOUCH II HPi	New HPD-10 TOUCH II HPi

Heating codes  
E = ELECTRIC  
HW = HOT WATER  
G = GAS  
HPi = HEAT PUMP

Drain Codes  
V = VALVE  
P = PUMP

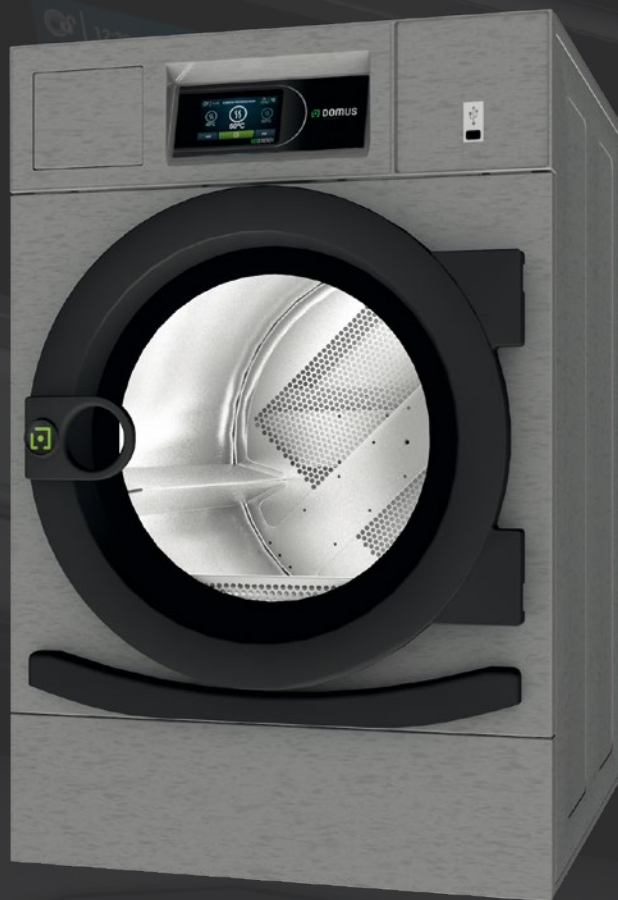
NOTE: All models can be easily converted to self-service, with a self-service kit, token kit or for central pay, etc.



## HPW washer extractors

- ✓ High spin washer extractor. Soft mounted.
- ✓ G-FACTOR 450.
- ✓ Grey skinplate body. AISI 304 Stainless steel drum and tub.
- ✓ Detergent manual dispenser with 4 compartments.
- ✓ 8 signals for automatic liquid dosing, programmable in time and delay.
- ✓ 2 water inlets (hot and cold).
- ✓ TOUCH II microprocessor with touchscreen.
- ✓ **DOMUSCONNECT: the IoT solution easy and free to manage the laundry, monitor machines, etc. from the cloud.**
- ✓ Model with drain valve and model with drain pump.
- ✓ Valve models especially designed for washing mops.
- ✓ Leveling feet included.
- ✓ CE and WRAS approved.





## HPD tumbre dryers

- ✓ Heavy professional tumble dryers 8 and 10 kg.
- ✓ Robust construction, grey skinplate panels. White painted panels for HPDL-10 M model.
- ✓ Industrial aluminium door with large diameter.
- ✓ TOUCH II microprocessor models, 4,3" touchscreen, programmable.
- ✓ Digital M programmer.
- ✓ DOMUSCONNECT: the IoT solution easy and free with TOUCH II to manage the laundry, monitor machines, etc. from the cloud.
- ✓ Versatile machine, same model for self-service and OPL.
- ✓ Stackable on top of a HPW washer or on another HPD dryer, with control panels between both drums (except HPDL-10 M model).
- ✓ Electric heating with two possible configurations: 4.5 or 6.75 kw.
- ✓ Gas heated models both with TOUCH II and M.



DOMUS

ECOENERGY



# 4<sup>+</sup> STRENGTHS



## OUTSTANDING FEATURES

- ✓ **High G-Factor 450.**
- ✓ Two controls available:
  - TOUCH II microprocessor: easy to use, fully programmable, 4.3" touch screen and IoT connectivity.
  - M programmer: time and temperature selection, easy to use and versatile.
- ✓ **DOMUSCONNECT** - Standard and free IoT connectivity with the TOUCH II.
- ✓ **8 dosing signals as standard.**
- ✓ **USB port:** configure, update and analyse machines without internet connection.
- ✓ **NEW telemetry:** detailed data with dynamic and customisable graphs.
- ✓ **Wet Cleaning** standard with the TOUCH II.
- ✓ **Versatile payment systems:** up to three combinable options between.
- ✓ **Short wash cycles:** heating power 6 kW.



### OPTIONS

- + Silicone gasket, delayed opening in case of electric power cut, normally closed valve, maritime voltage.



## ROBUSTNESS

- ✓ **Outer casing in grey skinplate.**
- ✓ **Robust aluminium door.**
- ✓ **AISI 304 Stainless steel** made inner drum, outer drum and ribs.
- ✓ **No inner drum seal (muffle):** easy to repair and clean.
- ✓ **Industrial house bearing and bearings** (up to 15.000 working hours) and possibility to replace bearings.
- ✓ **Same motor and inverter as industrial washers.**
- ✓ **Industrial and heavy duty doorlock.**

### OPTION

- + Stainless Steel AISI-304 panels.



## EFFICIENCY

- ✓ **Intelligent weighing system.**
- ✓ **Optimal Loading:** standard in all washers, for manual indication of the load weight.
- ✓ **Plinth for water recovery:** with tank included.
- ✓ **Plinth for mops** (filter included) only valve models.
- ✓ **High G-Factor 450**  
Reduced residual moisture  
> reduced drying time.



## VERSATILITY

- ✓ **OPL < > Self-service**  
Standard model easily transformable.
- ✓ **Electric < > Hot water**  
Standard Electric model easily transformable to hot water model.
- ✓ **Pump < > Drain valve**  
Standard model easily transformable.  
Easy access and service.
- ✓ **Single < > Stacked**  
Standard model easily stackable with a dryer.
- ✓ **All models prepared for the Wet Cleaning system**
- ✓ **Suitable for many sectors:** Restaurants, gyms, campings, mop cleaning, apartments, self-service laundries, dry cleaners, nurseries...



OPL



Self-service



# OUTSTANDING FEATURES

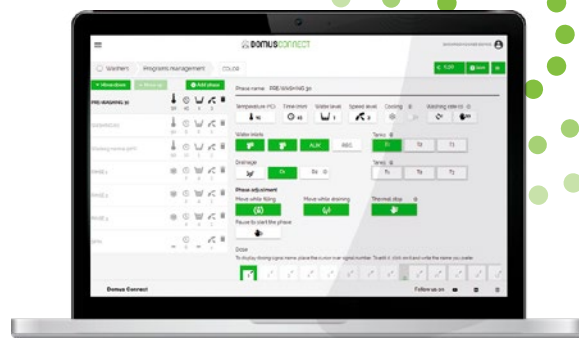


## DOMUSCONNECT:

### Maximum efficiency and real-time control

Discover the power of IoT connectivity, integrated for free in all machines with TOUCH II via Ethernet, for advanced and efficient management.

- ✓ Monitor telemetry and statistics in real time.
- ✓ Optimise the performance of your equipment.
- ✓ Ensuring MAXIMUM HYGIENE.
- ✓ Receive remote technical support.
- ✓ Update the software and much more.



## TOUCH II Programmable Microprocessor

4.3" touchscreen display.  
Wash and spin speed configuration.  
Full regulation of water levels.  
Wash temperature adjustable from 20°C to 90°C.  
Standard Wet Cleaning system.



## USB port

If you don't have an internet connection in your laundry, the USB port allows you to configure, update, and analyse the machines via this connection by downloading and uploading data.

## High G-Factor reduces residual moisture and drying time

The higher the G-Factor in washing machines, the more water is extracted and the less residual moisture in the clothes.

## Videos on screen

Advertisements, instructions (useful for self-service).



## Short Wash Cycles

Heating Power 6 kW.





# EFFICIENCY



## Pulse concentrator



## LEMS by Onnera

Track the consumption of your washers and dryers with the new LEMS metering system integrated into the DOMUSCONNECT platform.



## Low water consumption

A standard washing program consumes less than 8 litres of water per kg and cycle.

## Water saving

Possibility of configuring three levels of savings.

## Water recovery plinth

As an option.  
Includes tank.



## Mop plinth includes filter

As an option and only for models with valve.



## Optimal Loading

Automatic kg adjustment according to manual display (standard).

## High G-Factor 450 for high spin machines

## Intelligent consumption

Automatic adjustment of water and soap (standard).





# VERSATILITY

In order to adapt to the needs of different businesses and businesses and sectors with the the lowest investment.

## **OPL < > Self-service**

Standard models easily transformable with coin/token kits.

## **Electric < > Hot water**

Standard electric models easily transformable to hot water models.

## **Drain valve < > Pump**

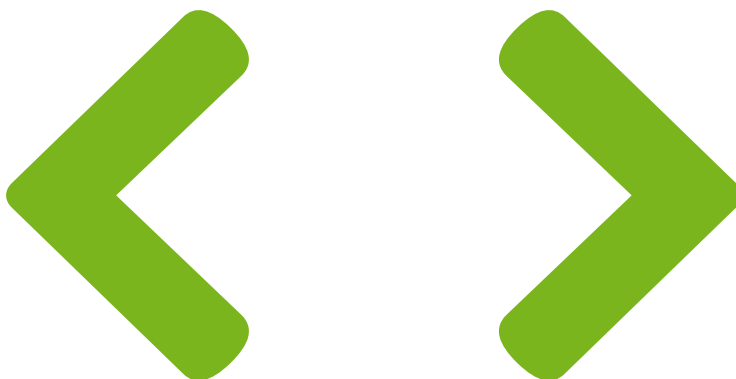
Standard models easily transformable. Easy access and service.

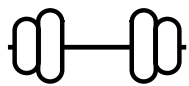
## **All washers have all features to use Wet Cleaning programs**



## **Unit < > Stacked**

The washing machine allows for stacking a dryer on top.





# ROBUSTNESS

**Exterior cabinet in grey  
skinplate**

**Industrial-grade bearing  
support and bearings**

**Cabinet in stainless steel  
AISI-304** (optional)

**Without muffle**  
Easier to repair and clean.

**Same motor and inverter  
as industrial washing  
machines**

**Robust, industrial  
door lock**

**Sturdy aluminum  
door**

**Drum, tub,  
and paddles**

Made of stainless steel  
AISI-304.







# 4<sup>+</sup> STRENGTHS



## OUTSTANDING FEATURES

- ✓ **Two controls available:**
  - **TOUCH II:** easy to use, fully programmable microprocessor with 4.3" touch screen.
  - **Programmer M:** time and temperature selection, easy to use and versatile.
- ✓ **DOMUSCONNECT:** standard and free connectivity (models with TOUCH II).
- ✓ **NEW telemetry:** detailed data with dynamic and customisable graphs.
- ✓ **USB port:** configure, update and analyse the machines without the need for internet connection.
- ✓ Short drying cycles (less than 45 minutes). 6.75 kW heating, 4.5 kW Option.

### OPTIONS:

- Plinth, humidity sensor, etc.



## EFFICIENCY

- ✓ **New range: HEAT PUMP MODELS.**
- ✓ **EFFICIENT DRY:** humidity sensor (only with TOUCH II).
- ✓ Optimised airflow.
- ✓ Wide fluff filter.
- ✓ Efficient design.

New heat pump (HPi) dryers



## ROBUSTNESS

- ✓ Outer casing in grey skinplate.
- ✓ White painted panels in HPDL-10 model.
- ✓ Robust aluminium big door.
- ✓ **Drawer as fluff filter.** Not in the door but a specific drawer.
- ✓ Industrial fan and powerful airflow.
- ✓ Sturdy construction of the dryer structure and panels.



## VERSATILITY

- ✓ **OPL < > Self-service**  
The same easily transformable model.
- ✓ **Single < > Stacked**  
They can be stacked on top of a washing machine or another dryer.
- ✓ **Reversible control panel:** the panel can be mounted on the bottom for better ergonomics when using a tumble dryer stacked on top of a washing machine.
- ✓ Ideal for multiple solutions: hotels, hostels, campings, self-service laundries, facility services (mop), gyms, etc.
- ✓ Gas heated models both with TOUCH II and M.

# OUTSTANDING FEATURES



## DOMUSCONNECT:

Maximum efficiency and real-time control

Discover the power of IoT connectivity, integrated for free in all machines with TOUCH II via Ethernet, for advanced and efficient management.

- ✓ Monitor telemetry and statistics in real time.
- ✓ Optimise the performance of your equipment.
- ✓ Ensuring MAXIMUM HYGIENE.
- ✓ Receive remote technical support.
- ✓ Update the software and much more.



## TOUCH II Programmable Microprocessor

4.3" touchscreen display.  
Standard Wet Cleaning system.



## USB port

If you don't have an internet connection in your laundry, the USB port allows you to configure, update, and analyse the machines via this connection by downloading and uploading data.

## M programmer

Use the buttons to control temperature and time.





# EFFICIENCY

Nuevo

LEMS

## Pulse concentrator LEMS by Onnera

New system to control actual consumption and turn your laundry into an ECOSMART LAUNDRY. Discover the savings you can achieve here:



## Reduced drying cycles

Less than 45 minutes.  
6.75 kW heating, 4.5 kW option.

## Improved airflow system

### EFFICIENT DRY

Humidity sensor (available only with TOUCH II).

## Efficient design

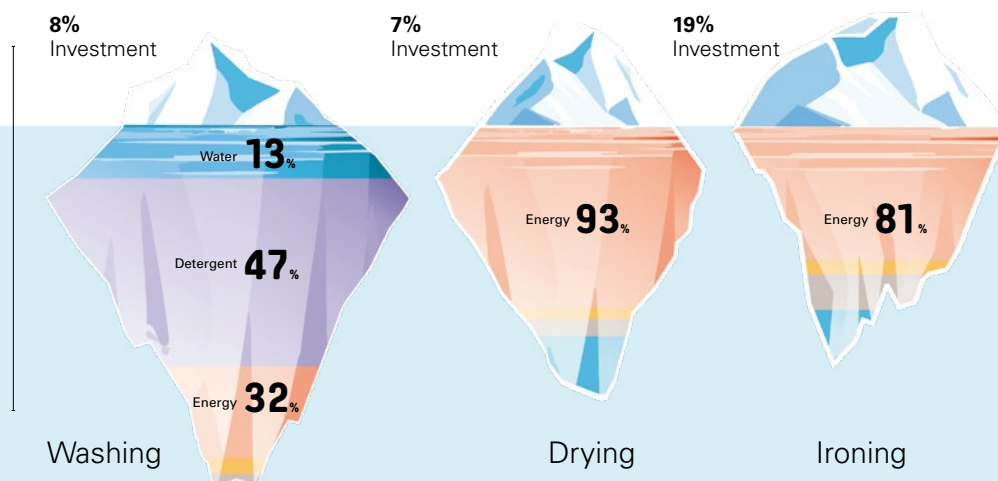
### Big fluff filter



## In a laundry, the machines are the visible part of an iceberg.

At DOMUS we pay attention to the iceberg part that cannot be seen, to optimize the expenses during the whole Life Cycle Cost.

Example of a standard laundry with 50% flat linen and 50% towelling, during the first 10 years of life.





# VERSATILITY

To adapt to the needs of the different businesses.

## **OPL <> Self-service**

Easy transformation from OPL to self-service.

## **Gas models with the TOUCH II microprocessor and M programmer**

## **Unit <> Stacked**

Reversible control panel: The control panel can be mounted at the bottom for better ergonomics when using a stacked dryer on top of a washer.

Control panels can be mounted between the two drums for better ergonomics and easy use (except for the ESSENTIAL model).

## **Ideal for many sectors**

Hotels, campgrounds, self-service laundromats, gyms, etc.





# ROBUSTNESS

## **Exterior cabinet in grey skinplate**

White lacquered panels on HPDL-10 model.

## **Stronger construction for the frame and panels**

## **Cabinet and drum in stainless steel** (optional)

## **Industrial fan**

With a powerful airflow

## **Sturdy aluminum door**

## **Lint filter drawer**

Not in the door but in a specific drawer



New

# HEAT PUMP TUMBLE DRYERS

The HEAT PUMP RANGE is unique in features and efficiency.

## Versatile

Easy to transform, for any sector and suitable for many businesses:

- OPL laundries: spa, hairdresser's, apartments, Wet Cleaning shops and many small businesses
- Self-service laundries.

## Easy operation

Ergonomics.

Short drying times.

Reverse drum action standard.

Humidity control standard.

Wide environmental temperature range: 6°C to 46°C.

## Easy installation

### ✓ No extraction

Heavy professional heat pump dryers do not need exhaust to the exterior.

No need of refrigeration water.

### ✓ Compact dimensions

Heat pump set in the plinth.

### ✓ Low consumption

The heat pump dryer consumes 1/5 of the installed power compared to an electric equivalent dryer.

Electrical panel with lower power required.

Multitension 230/400V 50/60 Hz.

## Easy maintenance

### Easy front acces to heat pump set

In the plinth.

No need of refrigeration water, no maintenance.

Type of gas: R-410A.



## ECOENERGY

ELECTRIC  
DRYER

7,17 kW

HPi  
DRYER

2,74 kW

**Direct  
Savings****Low power**

- ✓ The heat pump tumble dryer consumes around 60% less installed power than a conventional electric model of the same capacity.
- ✓ Less installed power means lower fixed power costs in power.

**Efficient**

It uses less than 0,5 kw/litre of evaporated water.

**Optimized cycle time**

Full load of  
100% cotton towels

Professional dryer

→ 70 minutes

60% load, 50% polyester  
50% cotton towels

→ 35 minutes



# OPL APPLICATIONS

..... ESPECIALLY DESIGNED FOR YOUR BUSINESS .....

HAIRDRESSERS

WET CLEANING

GYM

COUNTRY HOUSES / HOSTELS

BED & BREAKFAST

SPA

BEAUTY SALONS

FACILITY SERVICES (MOPS)

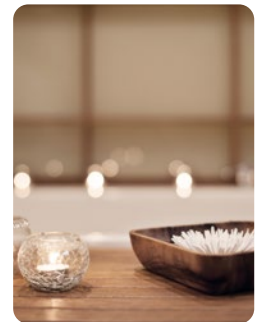
CARE HOMES

LABORATORIES

CLINICS

NURSERIES

SMALL INDUSTRIES





# SELF SERVICE APPLICATIONS

DESIGNED FOR EASY CONVERSION FROM OPL TO SELF-SERVICE

SELF-SERVICE  
LAUNDRIES

COLLEGES &  
UNIVERSITIES

CLEAN + US FOR  
HOTELS

APARTMENTS

CAMPINGS

HOSTELS




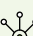

COMMUNITIES



## Payment options

### 1 DOMUS LAUNDRY KIOSK

Optimise your laundry with contactless payments and remote control. Provide convenience and security for your customers while managing pricing and promotions from anywhere with DOMUSCONNECT.

-  Available in 12' and 32' screens.
-  Allows payments by card or smart device (NFC).
-  Minimal fees.
-  High compatibility and easy to install.
-  Very intuitive and quick to use.



### 2 Payment via App DOMUS LAUNDRY

Allows remote machine reservation and payment, helping to build customer loyalty with promotional offers. See page 12 for more details.




### 3 Payment with COIN / TOKEN

Washers and dryers can include coin/token payment systems in various currencies.



Click the button to learn more about our payment systems.

 <b>HEAVY PROFESSIONAL WASHERS</b>					
	UNIT.	HPW-8 V	HPW-8 P	HPW-10 V	HPW-10 P
<b>CAPACITY &amp; DRUM</b>					
Capacity 1/9 -1/10	Kg	9/8	9/8	11/10	11/10
Volume	l	80	80	100	100
Diameter	mm	532	532	532	532
Depth	mm	360	360	425	425
<b>GENERAL DETAILS</b>					
Washing speed / Spining speed	r.p.m.	50 / 1.250	50 / 1.250	50 / 1.250	50 / 1.250
G Factor	-	450	450	450	450
Maximum force transmitted	KN	1,47 ± 0,53	1,47 ± 0,53	1,57 ± 0,53	1,57 ± 0,53
Frequency-dynamic force	Hz	18,33	18,33	18,33	18,33
Noise level	-	STD	STD	STD	STD
Coin laundry version	-	STD	NO	STD	NO
Double drain	dB	<70	<70	<70	<70
Weighing system / Tilting door	-	NO	NO	NO	NO
<b>DOOR</b>					
Height center door / Height door	mm	537 / 280	537 / 280	537 / 280	537 / 280
Diameter	mm	373	373	373	373
<b>POWER</b>					
Motor	kW	0,75	0,75	0,75	0,75
Electric heating power	kW	6	6	6	6
Total electric power (electric model)	kW	6,25	6,25	6,25	6,25
Total electric power (steam model)	kW	0,75	0,75	0,75	0,75
<b>DIMENSIONS &amp; WEIGHT (NET / GROSS)</b>					
Width	mm	680 / 710	680 / 710	680 / 710	680 / 710
Depth	mm	698 / 832	698 / 832	742 / 832	742 / 832
Height	mm	1.040 / 1.158	1.040 / 1.158	1.040 / 1.158	1.040 / 1.158
Weight	kg	150 / 168	150 / 168	155 / 166	155 / 166

**NO** Not available | **OP** Optional, extra cost | **STD** Standard

DOMUS reserves the right to modify technical data without prior notice.



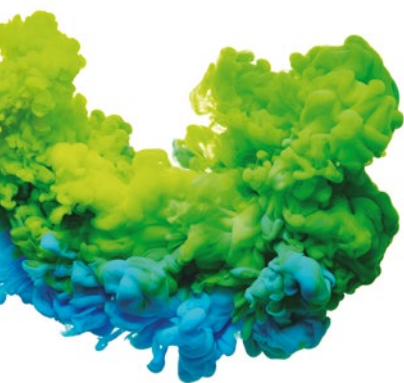
## HEAVY PROFESSIONAL DRYERS



	UNIT.	HPD-8	HPD-10	HPDL -10	HPD-08 HPi	HPD-10 HPi
CAPACITY & DRUM						
Capacity 1:20	Kg	8	10	10	8	10
Volume	l	160	200	200	160	200
Drum Ø	mm	590	590	590	590	590
Drum depth	mm	585	690	690	585	690
DOOR						
Height center door	mm	554	554	554	918	918
Height base door	mm	320	320	320	614	614
Door Ø	mm	480	480	480	480	480
GENERAL DETAILS						
Type of control	-	Touch II 4,3"	Touch II 4,3"	M	Touch II 4,3"	Touch II 4,3"
USB connection	-	STD	STD	NO	STD	STD
Skinplate construction	-	STD	STD	NO	STD	STD
Plinth	-	OP	OP	NO	NO	NO
Self-service laundry version	-	STD	STD	STD	STD	STD
Noise level	dB	62	62	62	61	61
POWER						
Motor	kW	0,37	0,37	0,37	0,37	0,37
Electric heating	kW	4,92 / 7,17	4,92 / 7,17	4,92	2,74	2,74
Gas heating	kW	6,7	6,7	6,7	NO	NO
CONSUMPTIONS						
Electric heating	kW	4,5 / 6,75	4,5 / 6,75	4,5	2	2
Average propane gas consumption	kg/h	0,45	0,45	0,45	NO	NO
Average natural gas consumption	m³/h	0,46	0,46	0,46	NO	NO
OTHERS						
Fume exhaust Ø	mm	100	100	100	NO	NO
Maximum airflow	m³/h	300	300	300	NO	NO
DIMENSIONS & WEIGHT (NET / GROSS)						
Width	mm	680 / 710	680 / 710	680 / 710	680 / 710	680 / 710
Depth	mm	722 / 832	775 / 832	775 / 832	750 / 832	784 / 832
Height	mm	1.056 / 1.141	1.056 / 1.141	1.056 / 1.141	1.400 / 1520	1.400 / 1520
Weight	kg	89 / 108	93 / 111	93 / 111	165 / 174	169 / 178

**NO** Not available | **OP** Optional, extra cost | **STD** Standard

DOMUS reserves the right to modify technical data without prior notice.



C. Energia, 12 - Pol. Ind. La Quintana  
08504 Sant Julià de Vilatorrada  
BARCELONA (SPAIN)

#### SALES DEPARTMENT

T. +34 93 888 71 53  
M. +34 649 482 730  
domus@domuslaundry.com  
export@domuslaundry.com

#### AFTER SALES DEPARTMENT

T. +34 93 888 76 73  
sat@domuslaundry.com

#### PARTS DEPARTMENT

T. +34 93 888 76 83  
parts@domuslaundry.com



[WWW.DOMUSLAUNDRY.COM](http://WWW.DOMUSLAUNDRY.COM)

