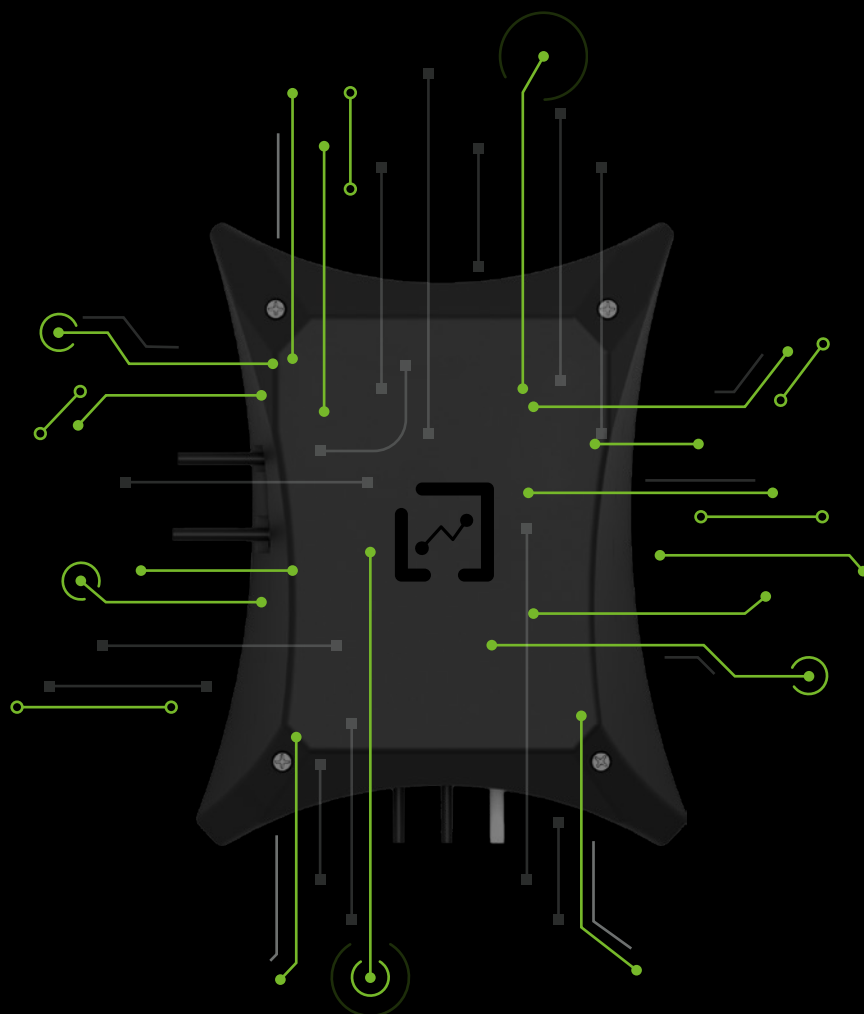




WINNING THE FUTURE THROUGH INNOVATION

INTERACTIVE  
CATALOGUE



 **ECOSMART** LAUNDRY

THE LAUNDRY OF THE FUTURE IS HERE

ONNERA GROUP

# WHAT IS AN ECOSMART LAUNDRY?



**ECOSMART LAUNDRY is the laundry of the future:** a comprehensive solution that gives you full control of your equipment, cycles and consumption in real time, as well as other useful metrics.

The possibility of transforming your laundry into a connected, intelligent and highly efficient business.

## Main advantages

Thanks to data transmission via IoT and its integration with the **DOMUSCONNECT** platform, all aspects of your **ECOSMART LAUNDRY** are interconnected, gathering accurate information in real time and allowing full process control.



### Accurate management of consumption

Control the actual consumption of your laundry, as well as other key metrics for more efficient management.



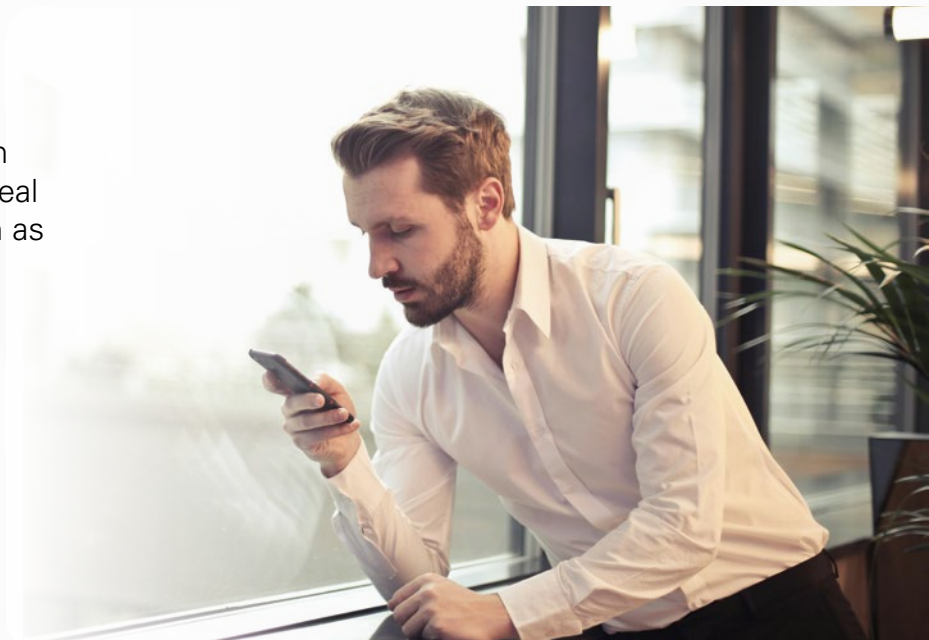
### Greater efficiency

It optimises the use of water, energy, gas, chemicals and time in each cycle, achieving significant cost reductions.



### Improved hygiene

It monitors temperature, wash times and chemical usage in real time, ensuring standards such as RABC.



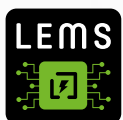
## Key factors

Discover on the following pages the 3 key factors that we will explore in depth later.



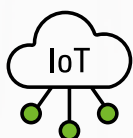
### 1. Efficient machines and solutions

For an **ECOSMART LAUNDRY** to be truly “eco,” it is essential to have efficient machinery and solutions such as the ECOTANK XL and the weighing system, all integrated into an **smart and connected ecosystem**.



### 2. Collect consumption data with LEMS

In this section, you will discover how Domus efficient machinery can be connected with the innovative LEMS pulse concentrator through the LEMS Counter Boxes, allowing you to access key data from your laundry in real time.



### 3. Monitor and manage with DOMUSCONNECT

The data collected by LEMS, together with other metrics and values of your laundry, are integrated into the DOMUSCONNECT platform, which you can access to monitor and control your business live and create detailed management, hygiene and efficiency reports.





## 1. EFFICIENT MACHINES AND SOLUTIONS

Domus machines with TOUCH II are the best option for their high efficiency and free IoT connectivity as standard, providing complete control of your **ECOSMART LAUNDRY**.

Together with the different solutions offered by Domus, it allows you to maximise savings, reduce times, facilitate management and, in short, improve the efficiency of your laundry.



Highly efficient, robust and versatile machines.



Equipped with IoT connectivity as standard via Ethernet (models with TOUCH II).



## WASHING



### Washers with weighing system

This system, available as an option, automatically adjusts the water and detergent consumption according to the actual load.

- ✓ It optimises performance in incomplete loads.
- ✓ Significant savings.
- ✓ Available for washers and barriers.



### ECOTANK XL: Water recovery tanks

Very robust, large-capacity water recovery tanks, to save a substantial amount of water.

- ✓ 1000 litre capacity.
- ✓ Highly sustainable solution.
- ✓ Can be combined with more ECOTANK XL and several washers with TOUCH II.



### Weighing system + ECOTANK XL

Thanks to the ECOTANK XL water recovery tanks and the weighing system integrated in the legs, it is possible to **save between 40% and 70% of water per cycle**, optimising resources without compromising performance.

\*Depending on the types of programs, garments and processes.



Sensors on the legs





## DRYING

Domus tumble dryers have been designed to offer maximum efficiency, exceptional drying quality and are ready to be part of your **ECOSMART LAUNDRY**.

The **ECO-ENERGY** range is the most complete and comes with as standard with a wide range of advanced solutions:

- ✓ DOMUSCONNECT: IoT connectivity.
- ✓ AIR RE-CYCLE: air recycling for greater efficiency.
- ✓ EFFICIENT DRY: intelligent humidity control.
- ✓ FULL FLOW: optimised axial-radial total airflow.
- ✓ THERMAL INSULATION: thermal insulation.



Each cycle is optimized to reduce both the energy consumption and the drying time.

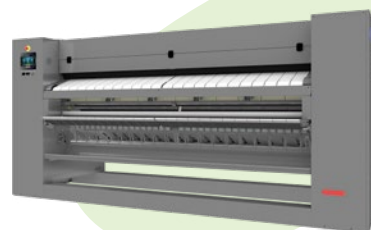


## IRONING

The new Ø **500 and 650 mm CF range** and its wide range of efficient solutions is the most complete range for your **ECOSMART LAUNDRY**, including as standard:

- ✓ DOMUSCONNECT: IoT connectivity.
- ✓ EFFICIENT IRON: automatic regulation of ironing speed according to residual moisture (standard 650, option in 500).
- ✓ OPTIMAL FEEDING: feed-in sensor for increased productivity.
- ✓ Gas models with radiant gas burner: more versatile and up to +25% productivity.

New



The SPE 600, 800 and 1000 mm range is ideal for high outputs up to 290 kg/h.

- ✓ 1 or 2 working lanes. 4 lanes as option.
- ✓ Including lengthfolder and crossfolder models. Stacker as option.



## 2.LEMS BY ONNERA

The innovative **LEMS** pulse concentrator (Laundry Efficiency Management System) collects information from various **LEMS Counter Box**.

This data is transmitted to the **LEMS Brain** pulse concentrator and then transmitted via the IoT to **DOMUSCONNECT** to generate a wide range of metrics about your laundry.

- ✓ It measures water, gas, and electricity consumption in real time.
- ✓ It transmits the data automatically and securely to the DOMUSCONNECT platform.



### LEMS Brain: pulse concentrator

LEMS Brain receives the consumption of all LEMS meters and transmits it via IoT to your account on the DOMUSCONNECT platform. Main features:



- You can connect up to a maximum of 31 LEMS Counter Box to each LEMS Brain you have.
- Wall installation.
- RS-485 connection between the LEMS Brain and the various LEMS Counter Boxes.
- Ethernet connection for sending data to DOMUSCONNECT.\*
- Available voltage: 230V 1N.
- Dimensions: 185 x 138 x 45 mm.
- 100m RS-485 cable reel (option).

### Fail-safe

To guarantee data persistence in the event of communication failures, ensuring that important information is not lost.

### Versatile

You will be able to measure consumption no matter the control of your machines: TOUCH II, M or even other brands (prior study required).

\* To connect to DOMUSCONNECT via Ethernet, a router, data plan, and Ethernet cabling are required (not included).



Data flow diagram.





## LEMS Counter-Box: supply meters

Each machine has its own LEMS Counter-Box equipped with meters that record the exact consumption of water, gas or electricity as appropriate. Main features:

- ✓ Wall installation, next to each machine.
- ✓ Panels in skinplate: elegant look and easy to clean.
- ✓ It sends real-time consumption data via pulses (m<sup>3</sup> or kW) to the LEMS Brain, allowing accurate monitoring of the machines' resource usage.
- ✓ The connection is via RS-485 between the meter and LEMS Brain.
- ✓ Available voltages: 230V 1N and 400V 3N.



### LEMS Counter Box: ELECTRICITY & WATER

Main features:

- It collects the consumption data of **washers** and **barrier washer extractors**.
- 3 water inlets and 3 outlets (cold, hot, and auxiliary).
- 1 electrical inlet and 1 outlet
- Dimensions:  
535 x 490 x 225 mm.



### LEMS Counter Box: ELECTRICITY & GAS

Main features:

- It collects the consumption data of **dryers** and **ironers** with gas heating.
- 1 gas inlet and 1 outlet.
- 1 electrical inlet and 1 outlet.
- Maximum flow rate: 6, 10, 25 m<sup>3</sup>/h.
- Dimensions:  
535 x 490 x 225 mm.  
580 x 550 x 275 mm.



### LEMS Counter Box: ELECTRICITY

Main features:

- It collects the consumption data of **dryers** and **ironers** with electric heating.
- 1 electrical inlet and 1 outlet.
- Dimensions:  
320 x 400 x 210 mm.



**Important:** refer to the technical datasheets of the equipment for information on voltage and electrical amperage to select the compatible LEMS Counter Box model.



## LEMS System: Connections and Operation

Thanks to the combination of smart meters (**LEMS Counter Box**), data concentrator (**LEMS Brain**) and the **DOMUSCONNECT** online platform, you will be able to accurately measure the water, gas and electricity consumption of each machine in real time, as well as obtain other metrics.

In this example of an **ECOSMART LAUNDRY**, you will see the different elements of the system, their connections and usual location and their integration in the laundry.



**IoT connection via Ethernet** or accurate metrics and full remote control from DOMUSCONNECT. Only Domus models with TOUCH II.



**Pulse connection** between the Counter Boxes and the LEMS Brain.



**LEMS Counter Box supply meters** send actual consumption data via pulses to the LEMS Brain. RS-485 connection.



**LEMS Brain.** Concentrator of the pulses from all the Counter Box meters in the laundry.

### 2 LEMS by ONNERA

SPE flatwork ironer with radiant gas burner.

+ Counter Box:  
Electricity & Gas.



DTT-18 gas dryer with  
TOUCH II

+ Counter Box:  
Electricity & Gas.



### 1 EFFICIENT MACHINES AND SOLUTIONS



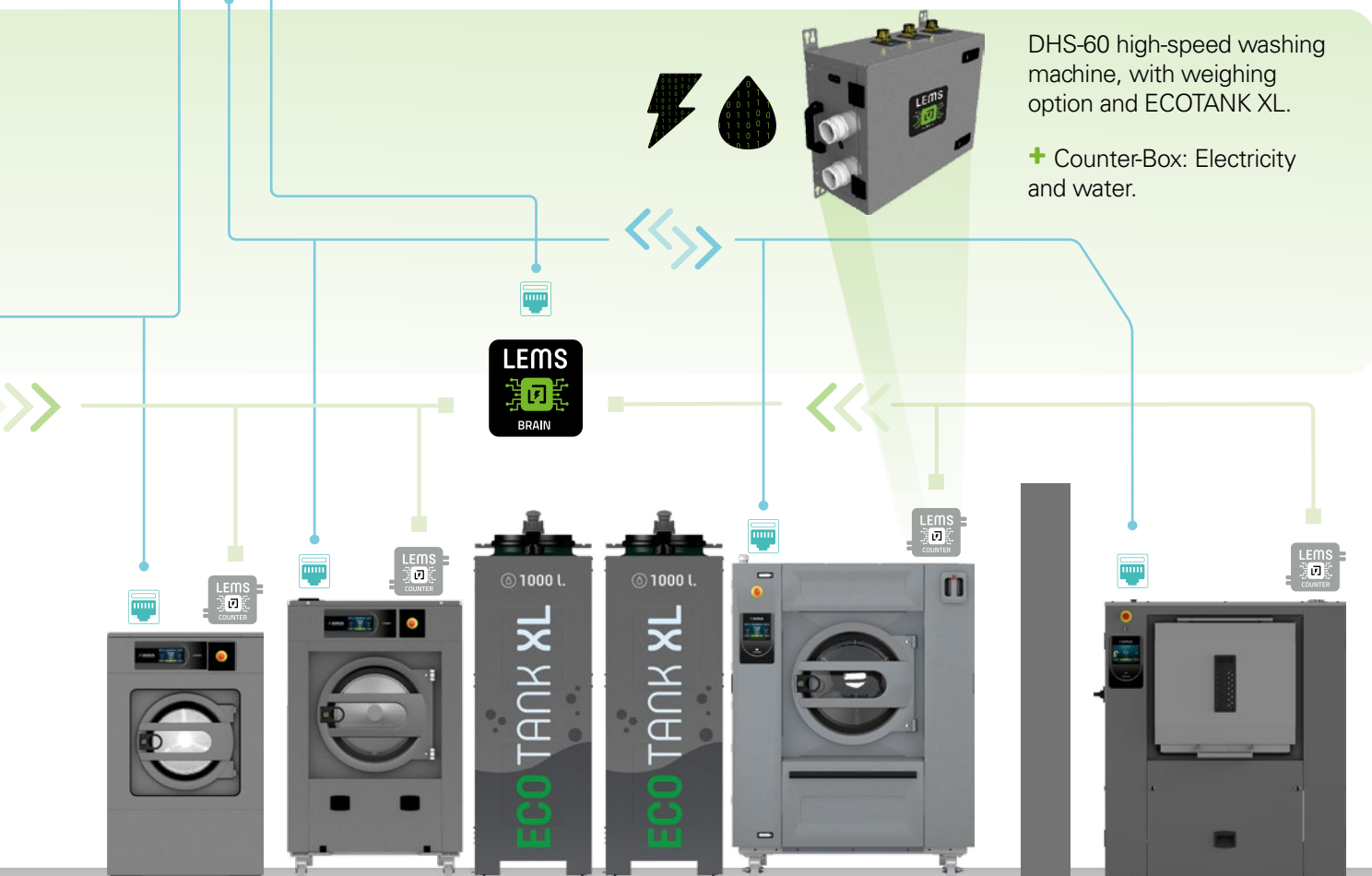
### 3 DOMUSCONNECT all your laundry at your fingertips



The graphs and metrics of the DOMUSCONNECT control panel (see page 10) can be displayed on a TV screen as an information panel. Available soon in a free update.



All consumption data and additional metrics of the machines with TOUCH II are sent to DOMUSCONNECT, where you can view and analyse them.





### 3.DOMUSCONNECT (IoT)

DOMUSCONNECT is Domus' free standard IoT platform that **integrates and analyses all the data collected by LEMS**, as well as other metrics collected from the machines with TOUCH II.

It is key to improving the efficiency and control of your connected laundry.



#### Main advantages



##### **Avoid unnecessary travel.**

Owners, technicians and chemical partners can remotely manage and supervise each machine and process, saving time and resources.



##### **Total control of your business.**

Manage the machines, programs and users that have access from anywhere, with total flexibility..



##### **Stay on top of consumption.**

View consumption, performance and key metrics in real time. Generate customised reports.



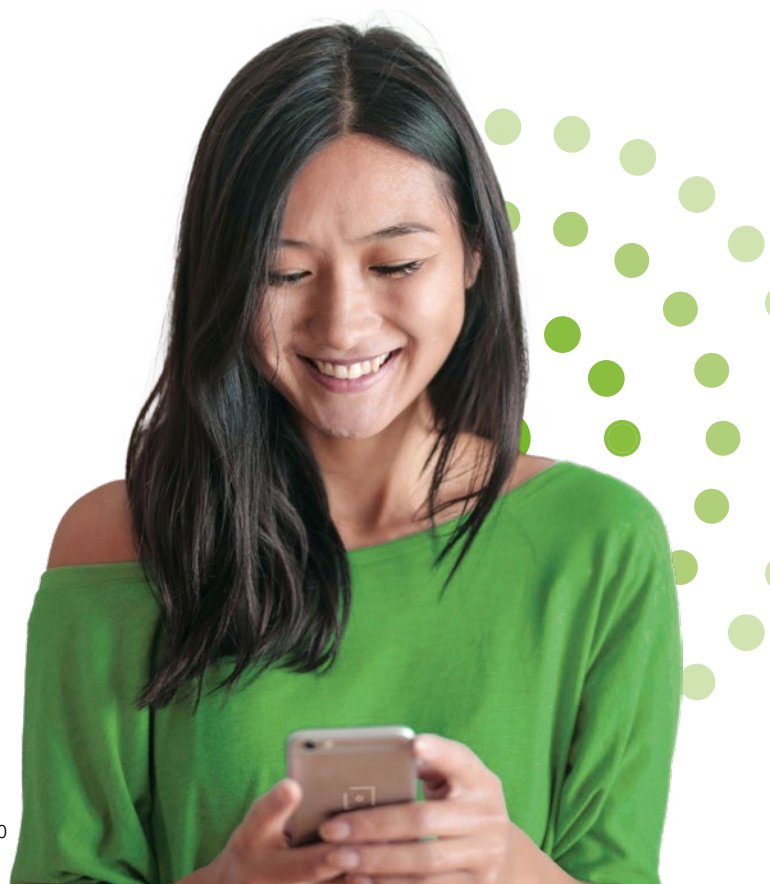
##### **Secure communication.**

Your data is protected by advanced protocols that guarantee its availability, integrity and confidentiality.



##### **Free updates.**

A specialised team works continuously to improve and add new functionalities to the web platform without having to pay fees or additional payments.



## Key features



### Dynamic dashboard

The new dashboard allows you to organise graphs with the different metrics of your **ECOSMART LAUNDRY** in customised groups.

- ✓ Label each graph according to your criteria.
- ✓ View groups of graphs with the same label.
- ✓ Create and save groups for different analyses (efficiency, productivity, hygiene, etc.).



### New telemetry

You will have access to key data from your laundry with dynamic visual and customisable graphs.

- ✓ Select by date range.
- ✓ Zoom in to see more detailed data.
- ✓ Hide and show data with a single click.

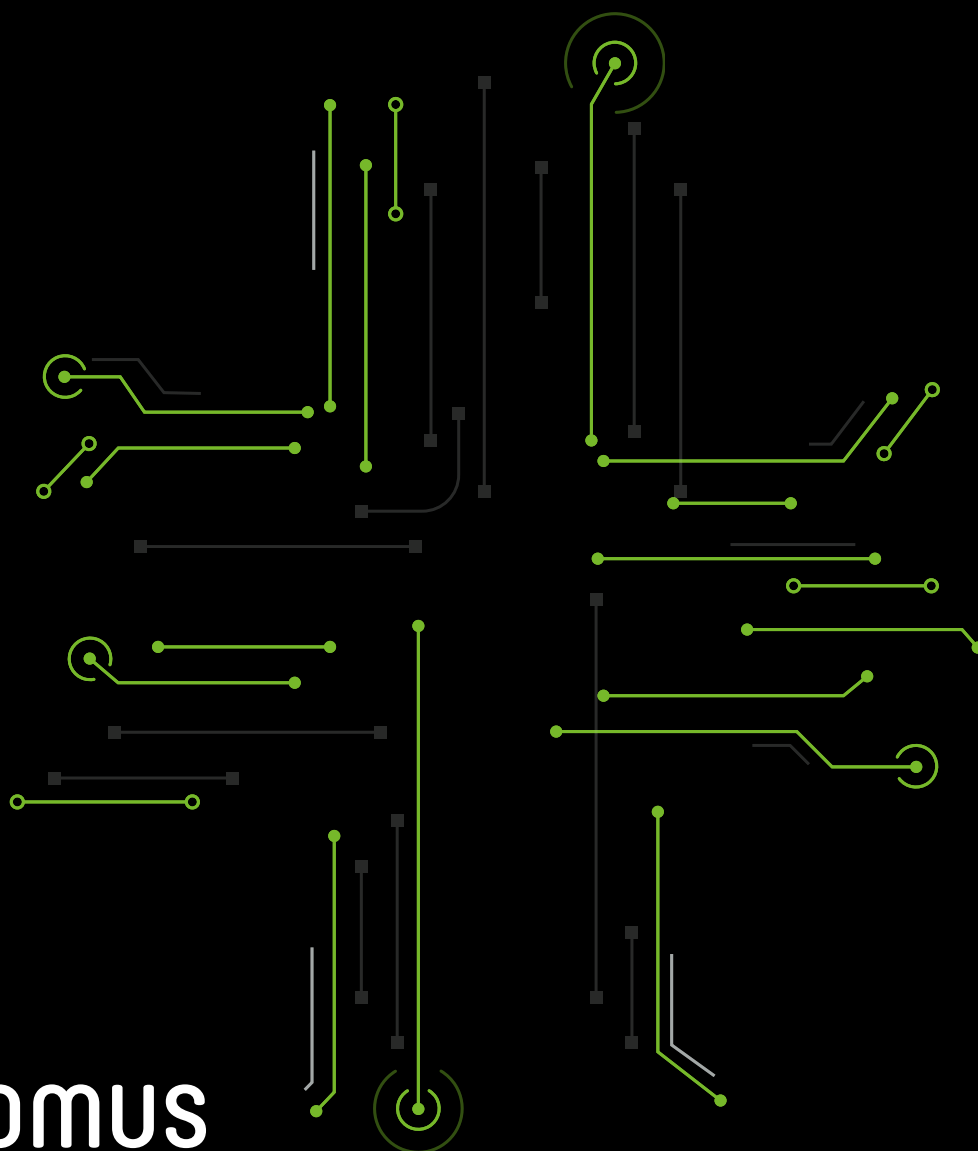


### Advanced automation

Configure washing and drying programs and phases in detail, like temperature, time, water levels, speed, water inlets, and many more.



Want to learn more about this platform? Click or press the button to discover more details, watch videos, and download the digital catalog.



C. Energia, 12 - Pol. Ind. La Quintana  
08504 Sant Julià de Vilatorrada  
BARCELONA (SPAIN)

#### SALES DEPARTMENT

T. +34 93 812 27 96  
M. +34 649 482 730  
export@domuslaundry.com

#### AFTER SALES DEPARTMENT

T. +34 93 888 76 73  
sat@domuslaundry.com

#### PARTS DEPARTMENT

T. +34 93 888 76 83  
partslaundry01@onneragroup.com

ONNERA GROUP



[WWW.DOMUSLAUNDRY.COM](http://WWW.DOMUSLAUNDRY.COM)



ONNERA GROUP